

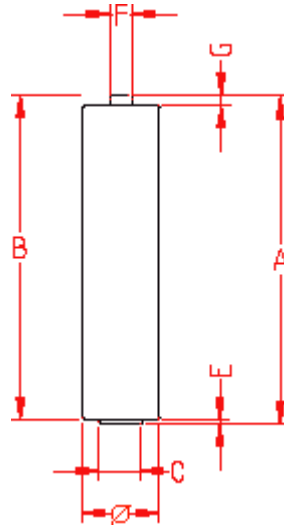
## 1. Battery Identification

Name	S/ LR03/ AM4/ AAA/ MN2400
Type	alkaline/ foil
Nominal Voltage	1.5 V
Electrolyte	KOH (potassium hydroxide)
Average Weight	10.8 g
Nominal internal resistance	+/- 120 mOhm (1kHz – fresh)

## 2. Battery Dimensions

Dimension	Max	Min	Typical
A	44.5		44.25
B		43.3	43.85
C		4.3	6.0
E	0.5		0.5
F	3.8		3.3
G		0.8	1.2
Ø	10.5	9.5	10.35

Unit : mm

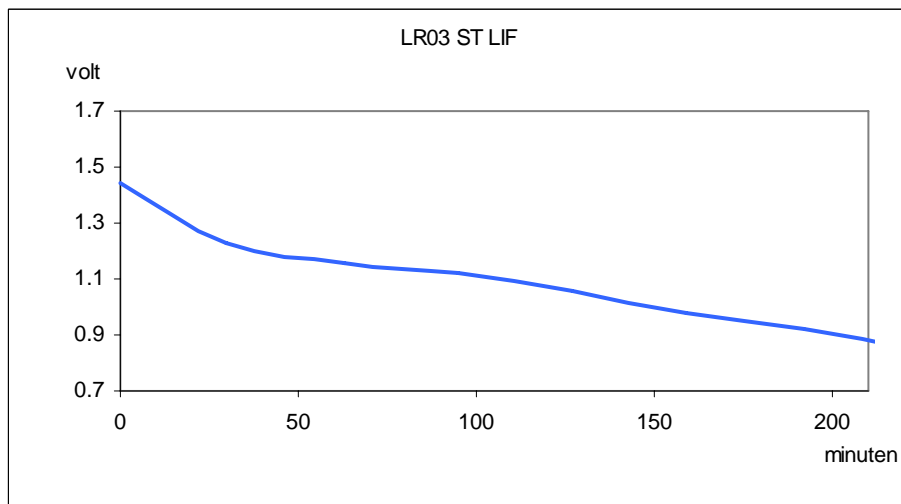
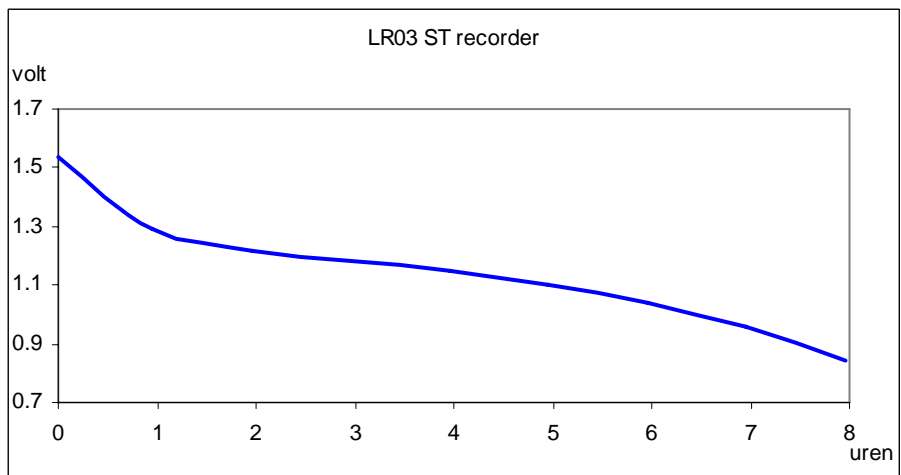
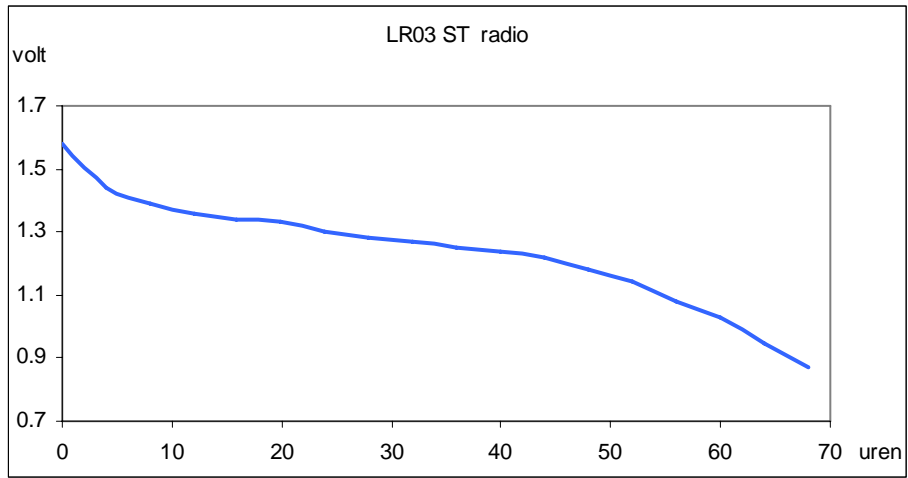


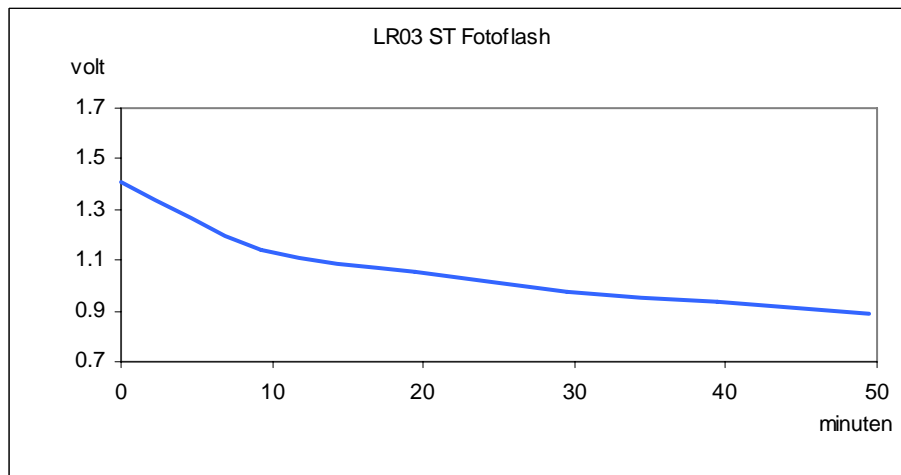
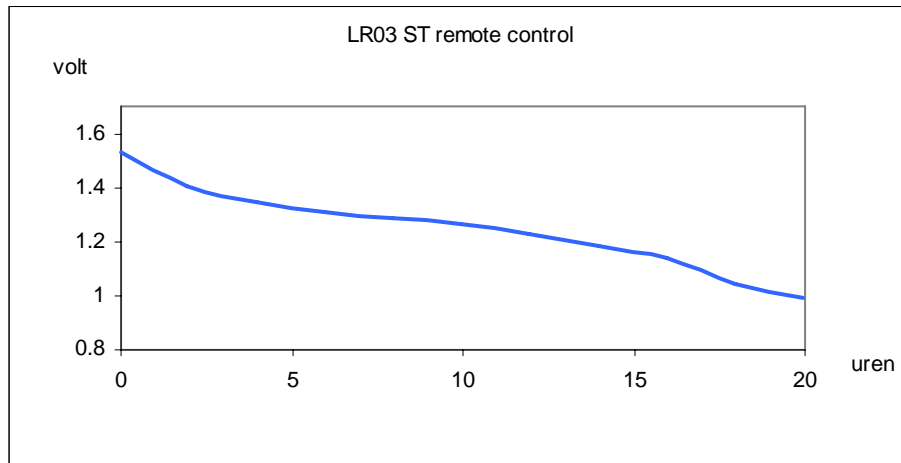
## 3. Battery Performance

### A. Typical Discharge Values

TEST	RESISTANCE	DAILY PERIOD	END POINT	TYPICAL	MIN AVG
Radio	75 ohm	4h	0.9 V	64h	60,6h
Recorder	10 ohm	1h	0.9 V	7,5h	6,4h
LIF	5.1 ohm	4 min/h-8h/day	0.9 V	205 min	170 min
Remote control	24 ohm	15s/min-8h/d	1 V	18h	17,1h
Fotof ash	600mA	10s/min-1h/d	0.9 V	270 pulses	206 pulses

## 4. Discharge Curves





## 5. Material Safety Data Sheet

Item	Material	%
Total Weight		<b>10,7 g</b>
Cathode	MnO <sub>2</sub> /C	42%
Anode	Zn/KOH	23%
Separator	Paper	1%
Current Collector	Brass	2%
Electrolyte	KOH/H <sub>2</sub> O	6%
Steel Can	Ni plated steel	21%
Bottomplate	Ni plated steel	1%
Washer	Zn plated steel	2%
Label	PVC	2%

No Mercury (Hg), Cadmium (Cd) or Lead (Pb) are used in the battery.