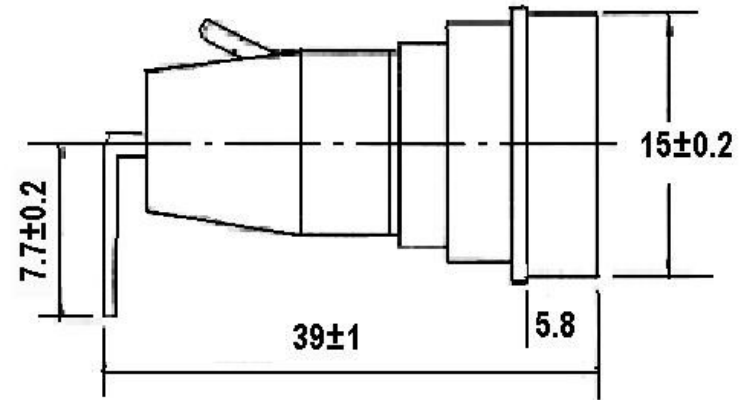
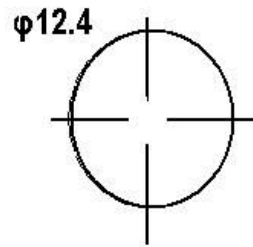


## SYMBOL: BPTF35 c

- DESCRIPTION: FUSE HOLDER
- SUITABLE FUSE:  $\Phi 5.2 \times 20$ mm tube fuse
- COLOUR: BLACK



## SPECIFICATIONS

### STRUCTURE:

- Holder: high temperature resisting
- flame-retarded plastic
- Clip pole: silver-plating brass

### ELECTRONIC CHARACTER:

- Rating current: 15A
- Rating voltage: 250V AC
- PACKING:
  - 200PCS/BAG
  - 3000PCS/CTN