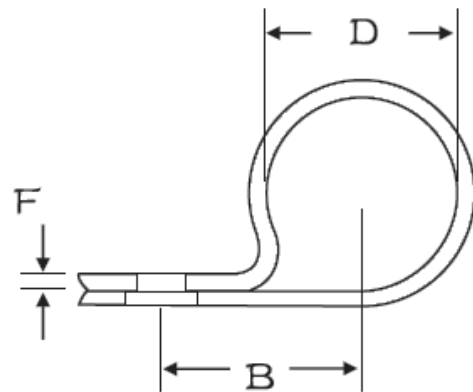
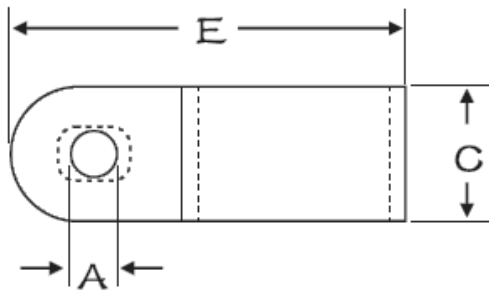


CC SERIES

SYMBOL	A	B	C	D	E	F	PACKING
CC-0	4.8	8.0	9.6	3.1(1/8")1	17.0	1.2	100 PCS
CC-0.5	4.8	9.2	9.6	5.0(3/16")	18.6	1.2	
CC-1	4.6	10.0	10.0	6.4(1/4")2	20.0	1.4	
CC-1.5	4.6	12.0	10.0	7.9(5/16")2	22.0	1.5	
CC-2	4.6	12.5	12.0	9.5(3/8")3	24.0	1.5	
CC-3	5.0	15.2	12.0	12.7(1/2")4	31.0	1.5	
CC-4	4.6	18.2	12.0	15.8(5/8")5	34.3	1.5	
CC-5	4.6	18.2	11.78	19.4(3/4")6	35.0	1.5	
CC-6	4.6	22.0	12.0	25.4(1")1	43.0	1.8	
CC-6.5	4.6	24.0	12.0	27.5(11/16")	50.0	1.8	
CC-7	4.6	26.2	12.0	31.8(11/4")1	46.2	1.8	
CC-9	4.6	30.0	12.0	36.7(11/2")1	50.0	1.8	



Material: Nylon66 (UL) (RoHS)
 Flame Class: 94V-2
 Color: Natural / Black

Unit: mm

