

SS1, ST1 Series 超小型引线型铝电解电容器

Super Miniature Size Aluminum Electrolytic Capacitor of Radial Lead Type

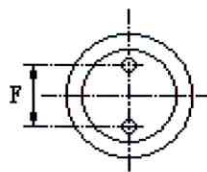
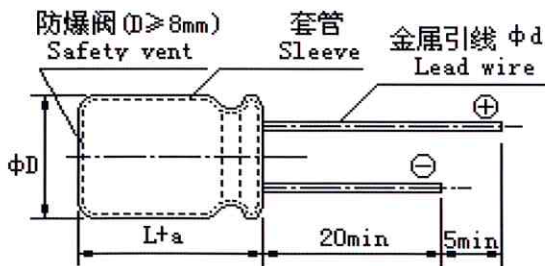
- 超小型 • 高 CV 值 • 高度为 7mm
- SS1 型为 85°C 产品; ST1 型为 105°C 产品。
- Miniature size • High CV • 7mm height
- SS1 series for 85°C; ST1 series for 105°C.



■ 主要技术性能 Specifications

使用温度范围 Operating Temperature Range	-40 ~ +85°C(SS1 series)	-40 ~ +105°C(ST1 series)																								
额定电压范围 Rated Voltage Range	6.3 ~ 63V DC																									
标称电容量允许偏差 (120Hz, 20°C) Capacitance Tolerance	± 20%																									
漏电流 Leakage Current	$I \leq 0.01CV (\mu A)$ 或 $3 \mu A$ 取较大者, Less than $0.01CV$ or $3 \mu A$ Whichever is greater																									
损耗正切角 Dissipation Factor (120Hz 20°C)	<table border="1"> <tr> <td>W.V.</td> <td>6.3</td> <td>10</td> <td>16</td> <td>25</td> <td>35</td> <td>50</td> <td>63</td> </tr> <tr> <td>tg δ</td> <td>0.24</td> <td>0.20</td> <td>0.16</td> <td>0.14</td> <td>0.12</td> <td>0.10</td> <td>0.08</td> </tr> </table>		W.V.	6.3	10	16	25	35	50	63	tg δ	0.24	0.20	0.16	0.14	0.12	0.10	0.08								
W.V.	6.3	10	16	25	35	50	63																			
tg δ	0.24	0.20	0.16	0.14	0.12	0.10	0.08																			
温度特性 (120Hz) Temperature Characteristics Impedance Ratio (120Hz)	<table border="1"> <tr> <td>WV</td> <td>6.3</td> <td>10</td> <td>16</td> <td>25</td> <td>35</td> <td>50</td> <td>63</td> </tr> <tr> <td>Z_{-25°C}/Z_{+20°C}</td> <td>4</td> <td>3</td> <td>2</td> <td>2</td> <td>2</td> <td>2</td> <td>2</td> </tr> <tr> <td>Z_{-40°C}/Z_{+20°C}</td> <td>8</td> <td>6</td> <td>4</td> <td>4</td> <td>4</td> <td>4</td> <td>4</td> </tr> </table>		WV	6.3	10	16	25	35	50	63	Z _{-25°C} /Z _{+20°C}	4	3	2	2	2	2	2	Z _{-40°C} /Z _{+20°C}	8	6	4	4	4	4	4
WV	6.3	10	16	25	35	50	63																			
Z _{-25°C} /Z _{+20°C}	4	3	2	2	2	2	2																			
Z _{-40°C} /Z _{+20°C}	8	6	4	4	4	4	4																			
耐久性 Load Life	<p>(SS1)+85°C/(ST1)+105°C 施加带纹波电流的额定电压 1000 小时, 恢复 16 小时后, 电容器应满足下列要求 After applying rated voltage with specified ripple current for 1000 hours at(SS1) +85°C or(ST1) +105°C and then resumed 16 hours. The capacitor shall meet the following limits.</p> <table border="1"> <tr> <td>电容量变化率 Capacitance Change</td> <td>≤ ± 20% 初始测量值 ≤ ± 20% of Initial measured value</td> </tr> <tr> <td>漏电流值 Leakage</td> <td>≤ 规定值 ≤ The specified value</td> </tr> <tr> <td>损耗角正切值 Dissipation Factor</td> <td>≤ 2 倍规定值 ≤ 200% of the specified value</td> </tr> </table>		电容量变化率 Capacitance Change	≤ ± 20% 初始测量值 ≤ ± 20% of Initial measured value	漏电流值 Leakage	≤ 规定值 ≤ The specified value	损耗角正切值 Dissipation Factor	≤ 2 倍规定值 ≤ 200% of the specified value																		
电容量变化率 Capacitance Change	≤ ± 20% 初始测量值 ≤ ± 20% of Initial measured value																									
漏电流值 Leakage	≤ 规定值 ≤ The specified value																									
损耗角正切值 Dissipation Factor	≤ 2 倍规定值 ≤ 200% of the specified value																									
高温贮存 Shelf Life	<p>(SS1)+85°C / (ST1)+105°C, 1000 小时, 恢复 16 小时后 After storage for 1000 hours at(SS1) +85°C or(ST1) +105°C and then resumed 16 hours</p> <table border="1"> <tr> <td>电容量变化率 Capacitance Change</td> <td>≤ ± 20% 初始测量值 ≤ ± 20% of Initial measured value</td> </tr> <tr> <td>漏电流值 Leakage</td> <td>≤ 2 倍规定值 ≤ 200% of the specified value</td> </tr> <tr> <td>损耗角正切值 Dissipation Factor</td> <td>≤ 2 倍规定值 ≤ 200% of the specified value</td> </tr> </table>		电容量变化率 Capacitance Change	≤ ± 20% 初始测量值 ≤ ± 20% of Initial measured value	漏电流值 Leakage	≤ 2 倍规定值 ≤ 200% of the specified value	损耗角正切值 Dissipation Factor	≤ 2 倍规定值 ≤ 200% of the specified value																		
电容量变化率 Capacitance Change	≤ ± 20% 初始测量值 ≤ ± 20% of Initial measured value																									
漏电流值 Leakage	≤ 2 倍规定值 ≤ 200% of the specified value																									
损耗角正切值 Dissipation Factor	≤ 2 倍规定值 ≤ 200% of the specified value																									

■ 外形图及尺寸 Case size table



	mm			
ΦD ± 0.5	4	5	6.3	8
L	7	7	7	7
F ± 0.5	1.5	2.0	2.5	3.5
Φd ± 0.05	0.45		0.5	
a	1.0			

SS1, ST1 Series

■ 标称电容量、额定电压、额定纹波电流及外形尺寸对应表

Nominal capacitance, rated voltage, rated ripple current and case size table

WV mA μF	6.3V 0J		10V 1A		16 1C		25V 1E		35V 1V		50V 1H		63V 1J	
	ΦD×L	I~mA	ΦD×L	I~mA	ΦD×L	I~mA	ΦD×L	I~mA	ΦD×L	I~mA	ΦD×L	I~mA	ΦD×L	I~mA
0.1 (0R1)											4×7	1.3	4×7	1.3
0.22 (R22)											4×7	3.0	4×7	3.0
0.33 (R33)											4×7	4.4	4×7	4.4
0.47 (R47)											4×7	6.3	4×7	6.3
1.0 (010)											4×7	12	4×7	12
2.2 (2R2)											4×7	16	4×7	16
3.3 (3R3)							4×7	18	4×7	18	4×7	19	4×7	21
4.7 (4R7)							4×7	21	4×7	22	4×7	24	5×7	26
10 (100)					4×7	28	4×7	31	4×7	30	5×7	42	6.3×7	45
22 (220)	4×7	34	4×7	38	4×7	42	5×7	55	5×7	55	6.3×7	64		
33 (330)	4×7	42	4×7	46	5×7	62	6.3×7	66	6.3×7	73	8×7	75		
47 (470)	4×7	50	5×7	66	5×7	73	6.3×7	80	8×7	95	8×7	85		
100 (101)	5×7	87	6.3×7	99	6.3×7	110	8×7	115	8×7	115				
220 (221)	6.3×7	133	8×7	165	8×7	145								
330 (331)	8×7	180	8×7	210										

I~额定纹波电流 Rated ripple current: (mA, 85/105°C, 120Hz)

编带产品规格 Taping Specifications (Radial Type)

■ Taping Specifications

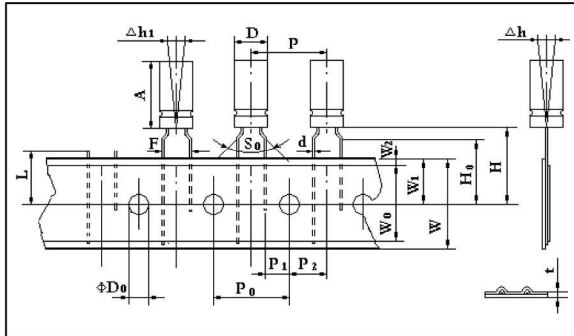


Figure 1

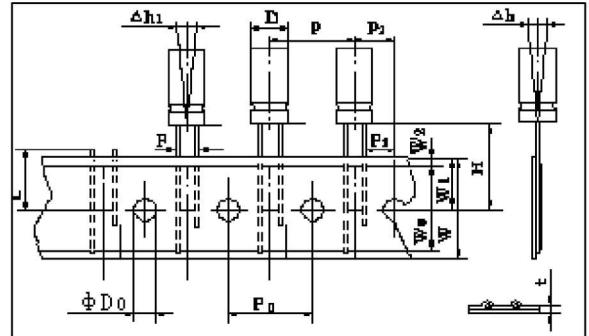


Figure 2

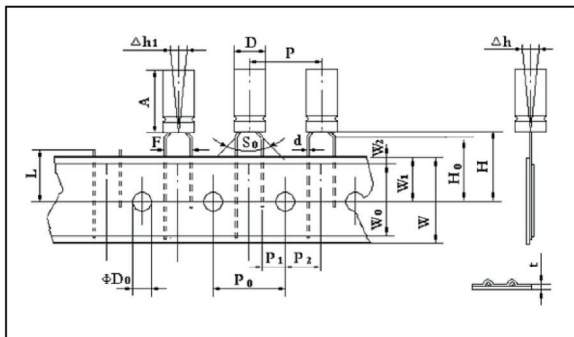


Figure 3

■ Packaging Specification

Diameter	Ammunition	Ammunition packing dimensions(mm)
	Quantity/Box(pcs)	
φ 4	3000	330 × 296 × 49
φ 5	2000	330 × 250 × 49
φ 6.3	2000	330 × 296 × 49
φ 8	1000	330 × 250 × 49

Code F1	Case Size				Tol
	4*5 4*7	5*5 5*7 5*11	6.3*5 6.3*7 6/6.3*11	8*5 8*7 8*11.5	
Reference figure	Figure 1				--
φ d	0.45	0.45 0.5 (5*11)	0.45 0.5 (6*11)	0.45 0.5(8*7) 0.5(8*11.5)	± 0.05
p	12.7				± 1.0
P ₀	12.7				± 0.3
P ₁	3.85				± 0.5
F	5.0				+0.6/-0.2
Δh	0				± 1.0
W	18.0				± 0.5
W ₀	12min				--
W ₁	9.0				± 0.5
W ₂	2.0 max				--
H	18.5 (17.5) *				± 0.5
H ₀	16.0				± 0.5
D ₀	4.0				± 0.3
t	0.6				± 0.2
Δh1	0				± 0.2

Code F2	Case Size					Tol
	4*5 4*7	5*5 5*7 5*11	6.3*5 6.3*7 6/6.3*11	8*5 8*7 8*11.5	ϕ 10	
Reference figure	Figure 2					--
ϕ d	0.45	0.45 0.5 (5*11)	0.45 0.5 (6*11)	0.45 0.5(8*7) 0.5(8*11.5)	0.60	± 0.05
p	12.7					± 1.0
P ₀	12.7					± 0.3
P ₁	5.6	5.35	5.1	4.6	3.85	± 0.5
F	1.5	2.0	2.5	3.5	5.0	+0.6/-0.2
Δ h	0					± 1.0
W	18.0					± 0.5
W ₀	12min					--
W ₁	9.0					± 0.5
W ₂	2.0 max					--
H	18.5 (17.5) *					± 0.5
H ₀	--					--
D ₀	4.0					± 0.3
t	0.6					± 0.2
Δ h1	0					± 0.2

Code F3	Case Size			Tol
	4*5 4*7	5*5 5*7 5*11	8*5 8*7	
Reference figure	Figure 3		Figure 2	--
ϕ d	0.45	0.45 0.5 (5*11)	0.45 0.5(8*7)	± 0.05
p	12.7			± 1.0
P ₀	12.7			± 0.3
P ₁	5.1			± 0.5
F	2.5			+0.6/-0.2
Δ t	0			± 1.0
W	18.0			± 0.5
W _c	12min			--
W ₁	9.0			± 0.5
W ₂	2.0 max			--
H	18.5 (17.5) *			± 0.5
H ₀	16.0	--		± 0.5
D ₀	4.0			± 0.3
t	0.6			± 0.2
Δ h1	0			± 0.2

成型产品规格

Lead Forming Specifications (Radial Type)

■ Lead Forming Specifications

Code		Case Size				Shape Figure
		D	d ± 0.05	s ± 0.5	h	
C	1	φ 4	φ 0.45	1.5	h ± 0.3	
		φ 5	φ 0.45/0.5	2.0		
		φ 6.3	φ 0.45/0.5	2.5		
		φ 8	φ 0.45/0.5	3.5		
C	B	φ 4	φ 0.45	5	h ± 0.3	
		φ 5	φ 0.45/0.5	5	h ± 0.3	
		φ 6.3	φ 0.45/0.5	5	h ± 0.3	
		φ 8	φ 0.45/0.5	5	h ± 0.3	
C	K	φ 4	φ 0.45	1.5	h ± 0.5	
		φ 5	φ 0.45	2.0	h ± 0.5	
		φ 6.3	φ 0.45	2.5	h ± 0.5	
		φ 8	φ 0.45	3.5	h ± 0.5	
φ 0.50						
C	N	φ 4	φ 0.45	1.5	h ± 0.5	
		φ 5	φ 0.45	2.0	h ± 0.5	
		φ 6.3	φ 0.45	2.5	h ± 0.5	
C	M	φ 4	φ 0.45	1.5	h ± 0.5	
		φ 5	φ 0.45	2.0	h ± 0.5	
		φ 6.3	φ 0.45	2.5	h ± 0.5	

Note: "h" depends on customer's requirement.