



YETDA INDUSTRY LTD.

**Q500HCY4G**  
**5mm Super Bright Yellow LED Lamps**

5mm with AlGaInP Dice ◦

Encapsulated with Water Clear Color Package ◦

\*Long Leads ◦

**Absolute Maximum Ratings : ( Ta=25°C )**

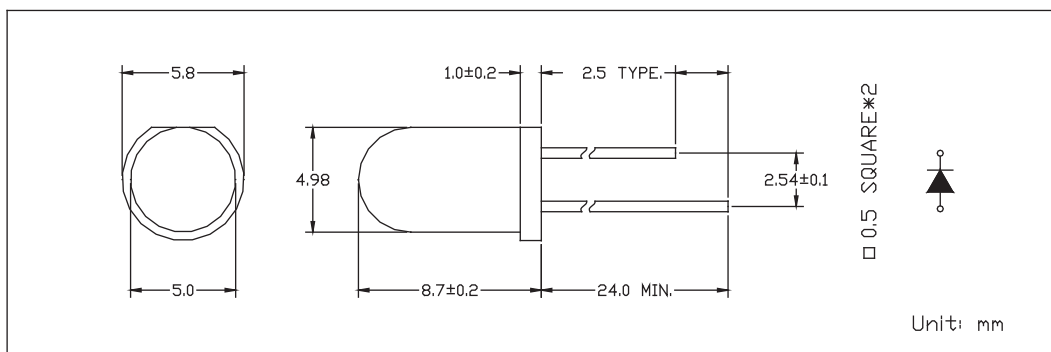
Parameter	Maximum Rating	Unit
Peak Forward Current	120	mA
Continuous Forward Current	30	mA
Operating Temperature Range	-40°C to +85°C	
Storage Temperature Range	-50°C to +100°C	
Lead Soldering Temperature	260°C for 3 seconds 1.6mm(0.063 inch) from body	

**Electro-Optical Characteristics ( Ta = 25°C )**

Parameter Radiant	Test Condition	Symbol	Min.	Typ.	Max.	Unit
Forward Voltage	I <sub>F</sub> = 20mA	V <sub>F</sub>		2.20	2.40	V
Reverse Current	V <sub>R</sub> = 5V	I <sub>R</sub>			10	uA
Luminous Intensity	I <sub>F</sub> = 20mA	I <sub>v</sub>		750		mcd
Spectral Bandwidth	I <sub>F</sub> = 20mA	Δλ		30		nm
Viewing Angle	I <sub>F</sub> = 20mA	λ <sub>d</sub>		590	595	nm
		2 θ <sub>1/2</sub>		30		deg

Package

Item: 500





# YETDA INDUSTRY LTD.

## Typical Optical Characteristics Curves

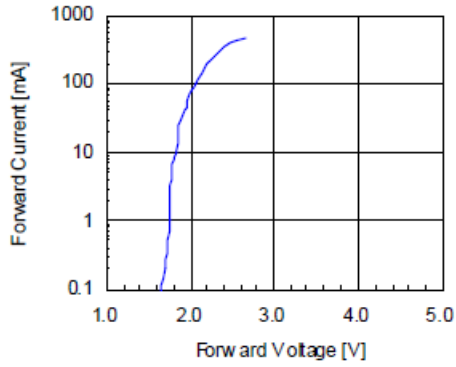


Fig 3. Forward Voltage vs. Temperature

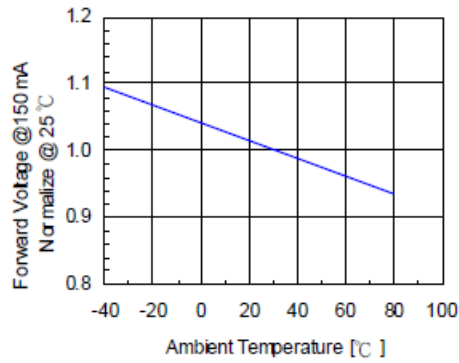


Fig 5. Relative Intensity vs. Wavelength

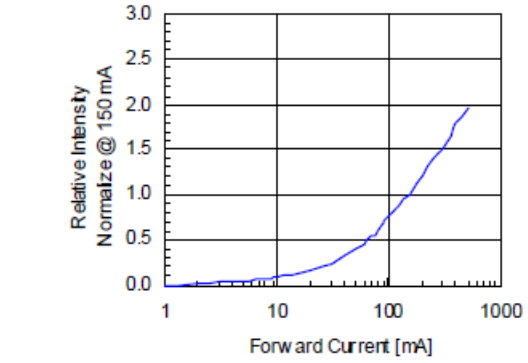
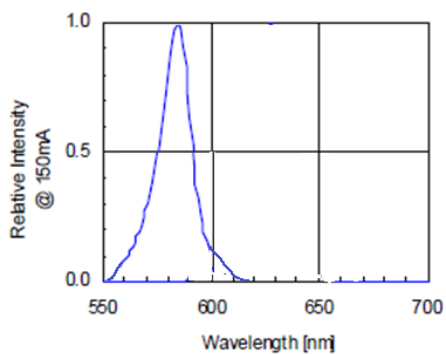
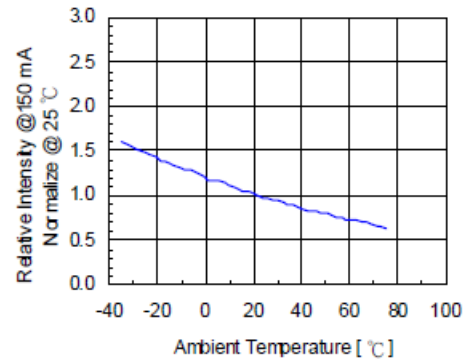


Fig 4. Relative Intensity vs. Temperature





# YETDA INDUSTRY LTD.

## •Soldering:

### 1. Manual of soldering

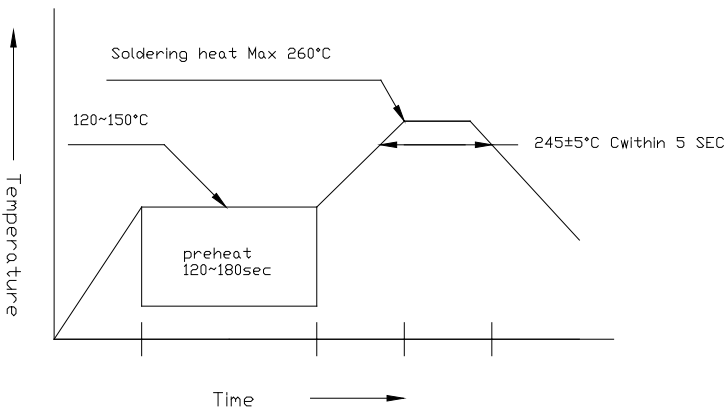
The temperature of the iron tip should not be higher than 260 °C and

Soldering within 3 seconds per solder-land is to be observed

### 2. DIP soldering (Wave Soldering):

Preheating: 120 °C ~ 150°C within 5 sec. 260°C (Max)

Gradual Cooling (Avoid quenching)

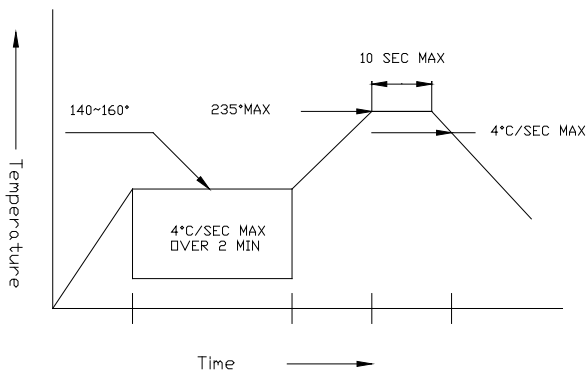


### 3. Reflow Soldering

Preheating: 140 °C ~ 160°C ± 5°C, within 2 minutes.

Operation heating: 235 °C (Max) within 10 seconds (Max)

Gradual Cooling (Avoid quenching)



## •Handling:

Care must be taken not to cause to the epoxy resin portion of Yetda LEDS while it is exposed to high temperature.

Care must be taken not rub the epoxy resin portion of Yetda LEDS with hard or sharp article such as the sand blast and the metal hook