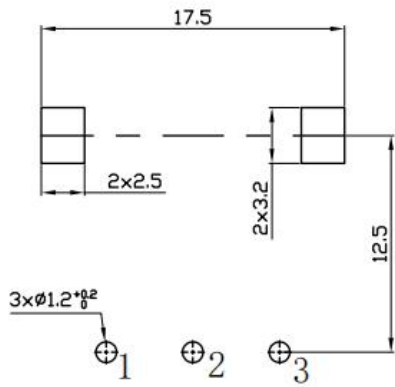
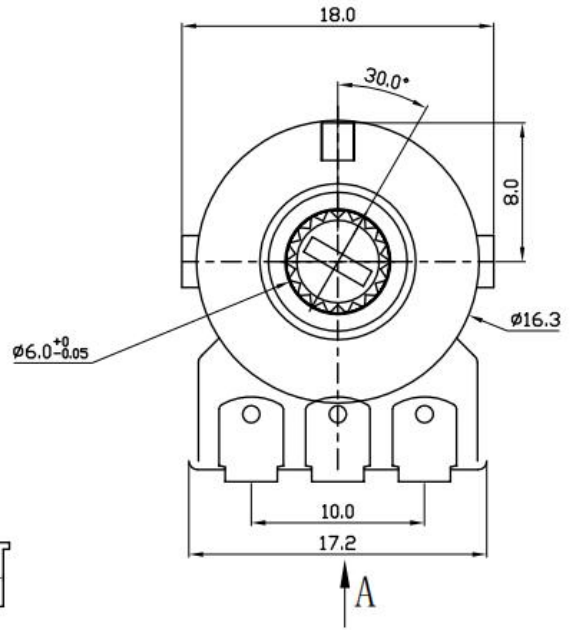
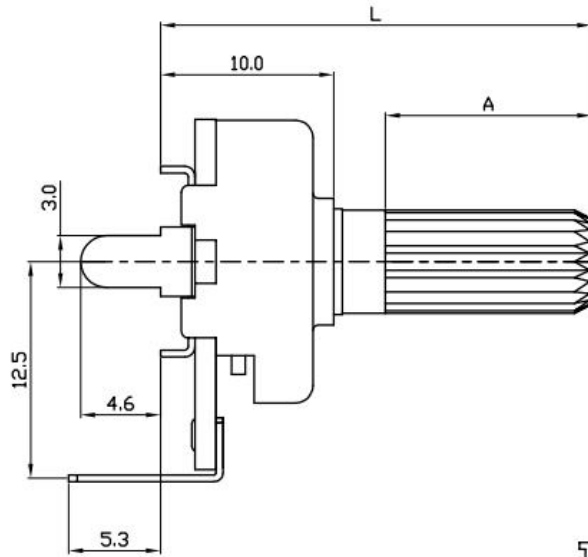
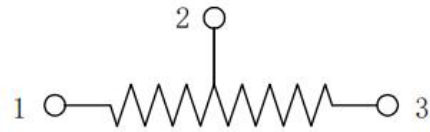


PO RK1615N-B10K/L25F



A向局部

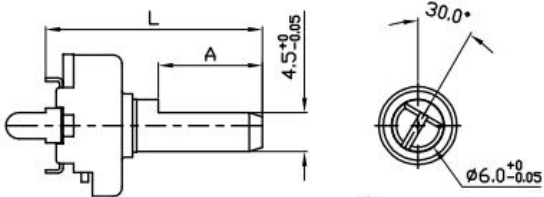


Circuit= N

Mounting hole detail

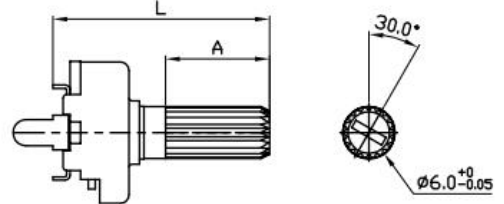
轴的类型:

F轴



F-TYPE	L	20.0	25.0	30.0	35.0
	A	7.0	12.0	12.0	12.0

TB轴



Y-TYPE	L	20.0	25.0	30.0	35.0
	A	7.0	12.0	12.0	12.0

A	新版发行		2022. 03. 23			
NO	DESCRIPTION		DATE	NO	DATE	
DRAWN BY	CHECK BY	APPROVED BY	UNMARKED TOLERANCE	NAME : RK1615N XXXX-25F		
			RANGE			TOL
			L ≤ 10.0			± 0.3
			L > 10.0	± 0.5		
	SCALE	1:1	L ≤ 100.0	± 1.0		
	UNII	mm	ANGLE	± 5.0°		



A

B

C

D

E

F

电位器规格书

SPECIFICATIONS

适用型号: R1615系列

APPLICABLE MODELS: R1615 Untit Series

一 构造 CONSTRUCTION

外观 各部应良好无锈蚀、裂痕、电镀不良现象

APPEARANCE: EVRY PART SHOULD BE FINISHED NOT TO EXIST RUST FLAW CRACK AND PLATING

二 机械的性能 (Mechanical characteristics)

ITEMS	SPECIFICATION
全回转角度: (Total rotational angle)	300°±5°
回转力矩: (Rotational torque)	20~200gf.cm (回转速度60度/秒)
回转止动强度: (Rotational stopper strength)	5kgf.cm Min
轴押引强度: (Push-pull strength)	5Kgf. Cm无间隙,10gf.cm无脱落
轴摇晃度: (Shaft wobble)	0.7×L/30mm p-p max.

三 电气的性能(Electrical characteristics)

ITEMS	SPECIFICATION
全阻抗值: (Total resistance)	B10KΩ
全阻抗值容许差: (Total resistance tolerane)	±20_%
残留阻值 (Residual resistance)	Terminal 1-2/2-3 10Ω max

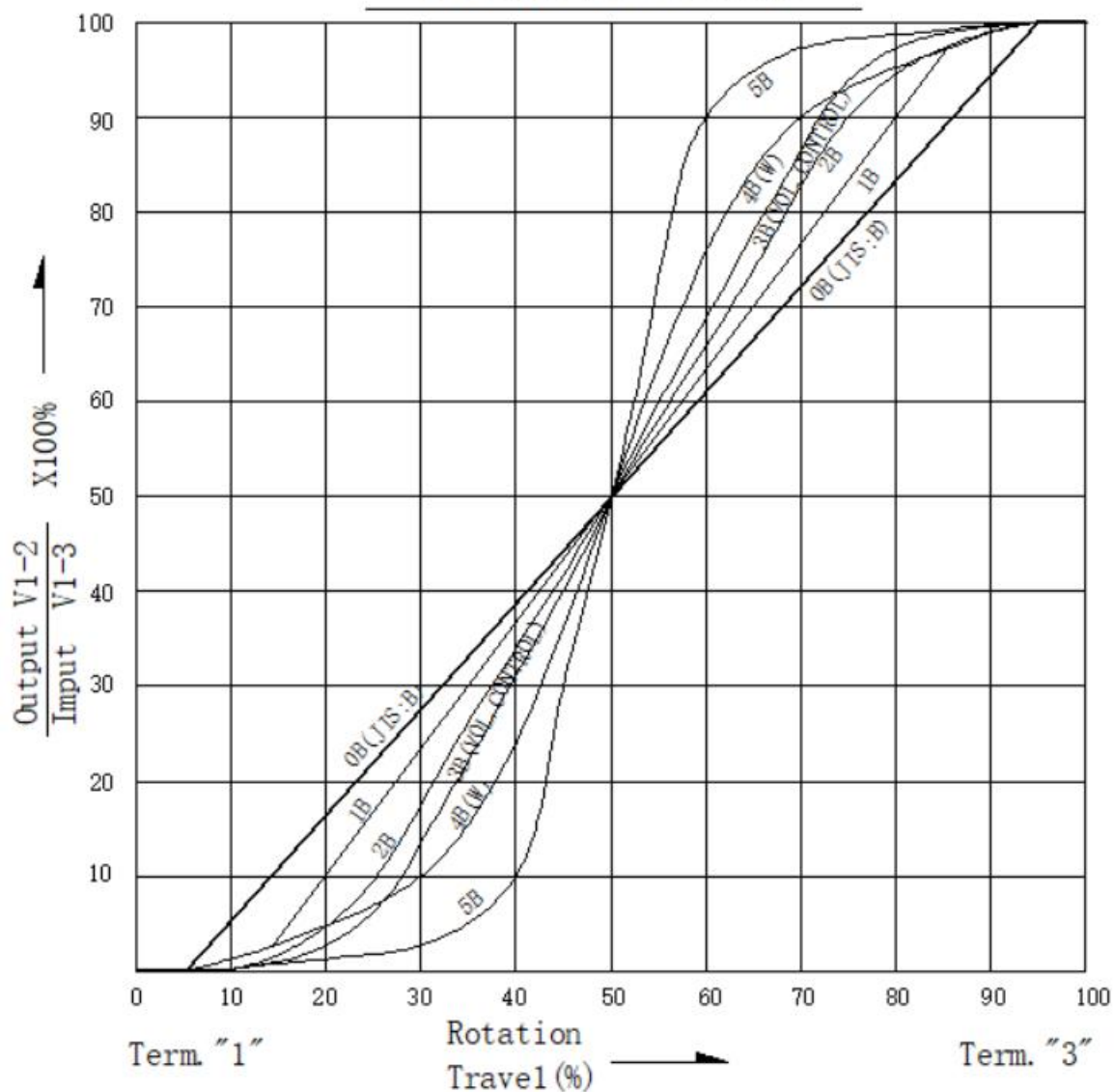
阻抗变化特性 Taper	测定角度 Test Point	端子1-2间输出电压V1-2	端子2-3间输出电压
		端子1-3间输入电压V1-3 (%)	端子1-3间输出电压
A	150°	10-25	
B	150°	40-60	
*C	150°		10-25
D	150°	2-15	
*E	150°		15-35
K	150°	15-35	
W	150°	5-15	
	150°	40-60	
	150°	85-95	
RD	*150°		2-15

注: *号表示自第三个端测起 (With Respect To Terminal 3)

定格电力: (Ratings power)	B: 0.1W A、C: 0.05W
最高使用电压: (Maximum operating voltage)	B taper 200V AC other 150V AC
滑动杂音: (Rotation noise)	Less than100mv
相互偏差: (Gang error)	3dB Max.(-40~0dB)
绝缘抵抗: (Insulation resistance)	100MΩ min.at 500V DC
耐电压: (Voltage proof)	1 minute at500V AC
回转寿命: (Rotational life)	15,000 cycles min

POTENTIOMETERS PATTERN OF RESISTANCE CURVE

TAPERS (B) SERIES



<input checked="" type="checkbox"/> 0B	<input type="checkbox"/> 1B	<input type="checkbox"/> 2B
<input type="checkbox"/> 3B	<input type="checkbox"/> 4B	<input type="checkbox"/> 5B