

# GQ16

## Metal Push Button



### Part-number Description

Code of series	The Front shape	Contact structure	Lamp type	Connet type	Lamp color and colorized button	Lamp voltage	Crust material
GQ16	★	□	◇	◆	△	▲	◎
	<b>B</b> Domed <b>F</b> Flat Round <b>H</b> High Round <b>PF</b> Super Flat Head + Flat Button <b>PH</b> Super Flat Head + High Flat Button	10 1NO 01 1NC  <b>1NC can be made to order for some products</b>  <b>No letter means signal lamp</b>	<b>D</b> Dot <b>E</b> Ring  <b>No letter means screw terminal</b>	<b>J</b> Pin terminal <b>L</b> Long Pin Terminal  <b>No letter means screw terminal</b>	<b>R</b> Red <b>G</b> Green <b>Y</b> Yellow <b>O</b> Orange <b>B</b> Blue <b>W</b> White <b>N</b> Black	AC/DC 6V AC/DC 12V AC/DC 24V AC/DC 36V  <b>Note: Other voltage can be made to order</b>	<b>N</b> Nickel-plated Brass <b>S</b> Stainless steel <b>A</b> Stainless steel <b>PC</b> Engineering plastic <b>Cr</b> Chrome-plated (made to order)

**Note:** Pls read the catalogue carefully, and choose the right part-number according to the sign.

### Specifications

<b>Operating Temperature</b>	-25°C~+55°C(no freezing) keep the air flowing around illuminated pushbutton
<b>Operating Humidity</b>	45~85%RH(no condensation)
<b>Contact Resistance</b>	≤50mΩ
<b>Insulation Resistance</b>	≥1000MΩ
<b>Dielectric Strength</b>	2000V,A C50Hz,5 seconds
<b>Vibration Resistance</b>	50Hz,Amplitude 1.2mm
<b>Shock Resistance</b>	> 10g
<b>Solder Heat Resistance</b>	320°C(or 30W soldering iron) no more than 2 seconds)

### Standard and Certification

Standard	Certification Mark	Certificate Authority /Certification Number
EN61058-1:2002+A2:2008	CE	VOV/VT11018807
EN60947-1:2004	CE	CTS/CTS070706-01006-E

### Switching Operation

Type	X	Y
<b>Sign</b>		
<b>Diagram</b>		

Note: Using two terminals, double-break and slow-motion contact

**Y type NC switch can be made to order for individual product, pls check the product description.**

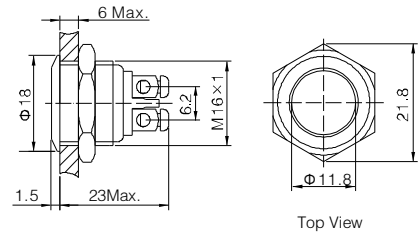
### Lamp Ratings

<b>Lamp Type</b>	LED lamp(AC/DC)
<b>Led Color</b>	<b>R</b> <b>G</b> <b>Y</b> <b>O</b> <b>B</b> <b>W</b>
<b>Life</b>	40000 hours ( Reference )
<b>Rated Voltage</b>	AC/DC6V,AC/DC12V,AC/DC24V,AC/DC36V
<b>Rated Current</b>	About 15mA
<b>DroppingWay</b>	External resistance
<b>Lamp Circuit Diagram</b>	Using AC/DCLed lamp, the terminals have no difference of anode and cathode. 

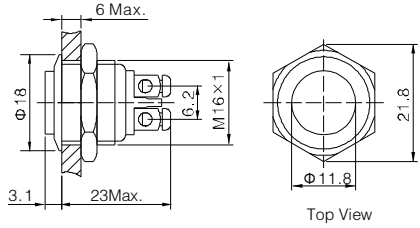
**Note:** DC LED and other voltage can be made to order.



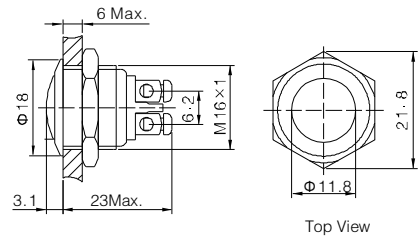
- ◎ Φ 16mm Diameter
- ◎ Switch Rating:2A/36VDC
- ◎ Contact Configuration: 1NO(1NC can be made to order)
- ◎ Operation Type: Momentary
- ◎ The Front Shape: Flat Round
- ◎ The Crust Material(◎): Stainless steel(S)/ Nickel plated Brass(N)/Aluminium alloy black anodized(A)
- ◎ IP Degree: IP65,IK08



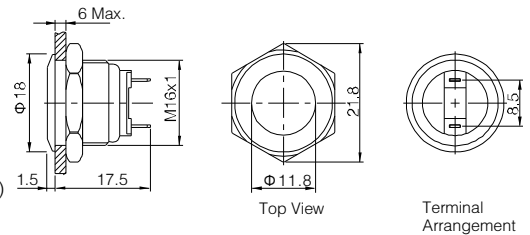
- ◎ Φ 16mm Diameter
- ◎ Switch Rating:2A/36VDC
- ◎ Contact Configuration: 1NO(1NC can be made to order)
- ◎ Operation Type: Momentary
- ◎ The Front Shape: High Round
- ◎ The Crust Material(◎): Stainless steel(S)/ Nickel plated Brass(N)/Aluminium alloy black anodized(A)
- ◎ IP Degree: IP65,IK08



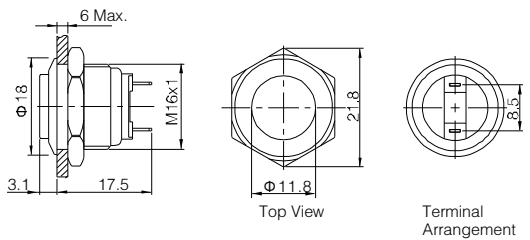
- ◎ Φ 16mm Diameter
- ◎ Switch Rating:2A/36VDC
- ◎ Contact Configuration: 1NO(1NC can be made to order)
- ◎ Operation Type: Momentary
- ◎ The Front Shape: Domed
- ◎ The Crust Material(◎): Stainless steel(S)/ Nickel plated Brass(N)/Aluminium alloy black anodized(A)
- ◎ IP Degree: IP65,IK08



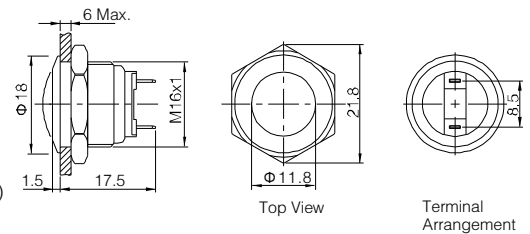
- ◎ Φ 16mm Diameter
- ◎ Switch Rating:2A/36VDC
- ◎ Contact Configuration: 1NO
- ◎ Operation Type: Momentary
- ◎ The Front Shape: Flat Round
- ◎ The Crust Material(◎): Stainless steel(S)/ Nickel plated Brass(N)/Aluminium alloy black anodized(A)
- ◎ IP Degree: IP65,IK08



- ◎ Φ 16mm Diameter
- ◎ Switch Rating:2A/36VDC
- ◎ Contact Configuration: 1NO
- ◎ Operation Type: Momentary
- ◎ The Front Shape: High Round
- ◎ The Crust Material(◎): Stainless steel(S)/ Nickel plated Brass(N)/Aluminium alloy black anodized(A)
- ◎ IP Degree: IP65,IK08



- ◎ Φ 16mm Diameter
- ◎ Switch Rating:2A/36VDC
- ◎ Contact Configuration: 1NO
- ◎ Operation Type: Momentary
- ◎ The Front Shape: Domed
- ◎ The Crust Material(◎): Stainless steel(S)/ Nickel plated Brass(N)/Aluminium alloy black anodized(A)
- ◎ IP Degree: IP65,IK08



GQ16F-10/◎ GQ16H-10/◎ GQ16B-10/◎		Material	Button	Stainless steel/ Aluminium alloy black anodized	GQ16F-10/J/◎ GQ16H-10/J/◎ GQ16B-10/J/◎		Material	Button	Stainless steel/ Aluminium alloy black anodized
Terminal Type	Screw Terminal <th>Body</th> <td>Stainless steel/Nickel plated Brass /Aluminium alloy black anodized</td> <th>Terminal Type</th> <td>Pin Terminal(2×0.5mm)</td> <th>Body</th> <td>Stainless steel/Nickel plated Brass /Aluminium alloy black anodized</td>		Body	Stainless steel/Nickel plated Brass /Aluminium alloy black anodized	Terminal Type	Pin Terminal(2×0.5mm)		Body	Stainless steel/Nickel plated Brass /Aluminium alloy black anodized
Switching	X(double-break slow-motion contact)	Operation Pressure	About 4N	Operation Pressure	About 4N	Base	PBT	Operation Pressure	About 4N
Panel Thickness	1 ~ 6mm	Operation Travel	About 2.5mm	Operation Travel	About 2.5mm	Terminal Type	Pin Terminal(2×0.5mm)	Operation Travel	About 2.5mm
Torque	0.6Nm	Panel Thickness	1 ~ 6mm	Torque	0.6Nm	Mechanical Life	1,000,000 cycles	Mechanical Life	1,000,000 cycles
Electrical Life	200,000 cycles	Electrical Life	200,000 cycles	Electrical Life	200,000 cycles	RoHS	Made to order	RoHS	Made to order