

## GQ19 series

The installation hole diameter is  $\Phi 19\text{mm}$ ;

- ☆ The switch is "self recovery | slow motion | single pole single throw";
- ☆ With rich product styles, compact size, economy and practicality, it has always been the preferred product for small panel users;
- ☆ The waterproof grade of the product is IP65.

### GQ19 series model description

GQ19★- ◇/◆/△/▲/◎

Symbol	Symbol name	Specify
★	Head shape	B: spherical / F: Flat round
	Contact Structure	10: 1NO / No digital means indicator / Some products can be customized with 1NC
◇	Illuminated Type	D: ● Dot illuminated / E: ○ Ring illuminated / ET: ⊕ Ring+power symbol illuminated / No letters mean no lights
◆	Wiring type	J: Wiring patch / No letters means terminals
	Color	R: Red / G: Green / Y: Yellow / B: Blue / W: White
	Voltage	6V / 12V / 24V / 110V / 220V All have built-in resistors, other voltage levels can be customized.
	Housing Material	N: Nickel plated Brass / S: Stainless steel / A: Aluminium alloy (Black)

Note: Please read the catalog carefully, and choose the right part-number according to the sign.

### Performance Characteristic

Operating Temp	-25°C~+55°C (Non freezing)
	Keep the switch air circulating well
Operating Humidity	45~85% RH(Non condensing)
Contact Resistance	≤ 50mΩ
Insulation Resistance	≥ 100MΩ (500VDC)
Max. withstanding voltage	1500VAC, 50Hz, 1min
Vibration resistance	50Hz, The amplitude is about 1.2mm
Solder heat resistance	320°C 3s
Switch rating	2A/36VDC 1A/220V
Mechanical Life	1,000,000 cycles
Electrical Life	50,000 cycles
Base material	PBT
Nut torque	About 0.6Nm
Torque	About 4N
Operation Travel	About 1.8mm
Protection class	IP65,IK06

### Standards and certification

Corresponding standard	Certification mark	Certification authority / certification number
GB/T 14048.5-2017	CCC	2020970305003361
EN61058-1:2018	CE	UDEM M 2021 206 C62197

### Switch structure description

Type	Diagram	Symbol
X		
Y		

Description: Double break point slow contact switch with two terminals

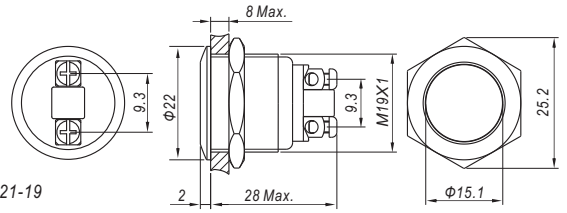
### LED Specifications

LED life	Current	Allowable voltage fluctuation range	Circuit diagram
≥ 40000 hours	≤ 24V about 15mA ≥ 110V about 2mA	DC: ± 10% AC: ± 20%	

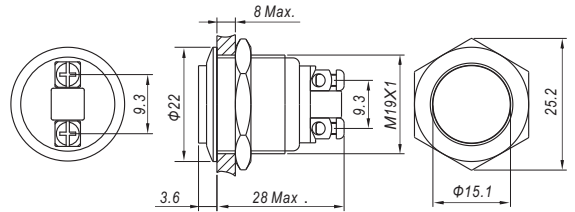
The product has built-in protective resistance, and the lamp bead wiring has no distinction between positive and negative poles.



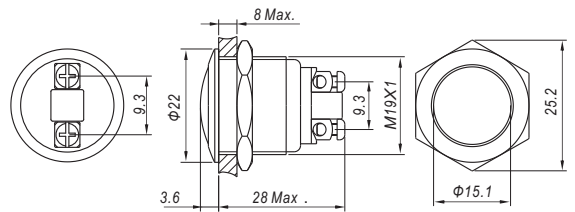
Contact Structure 1NO  
 Operation type Momentary  
 Housing Material N Nickel plated brass / S Stainless steel / A: Aluminium alloy (Black)  
 Wiring type Terminals  
 Protection class IP65, IK08  
 Applicable accessories Sealing cover M12-19F / protection cover T21-19



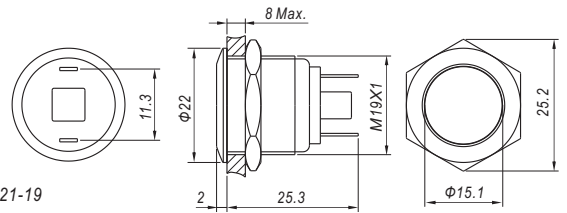
Contact Structure 1NO  
 Operation type Momentary  
 Housing Material N Nickel plated brass / S Stainless steel  
 Wiring type Terminals  
 Protection class IP65, IK08  
 Applicable accessories Sealing cover M12-19H



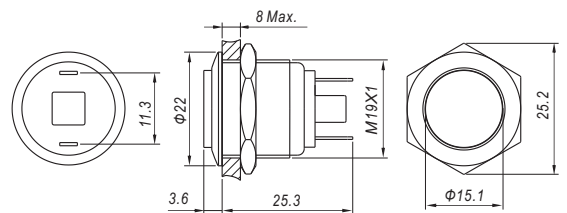
Contact Structure 1NO  
 Operation type Momentary  
 Housing Material N Nickel plated brass / S Stainless steel  
 Wiring type Terminals  
 Protection class IP65, IK08  
 Applicable accessories Sealing cover M12-19H



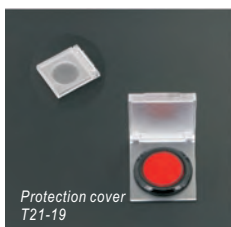
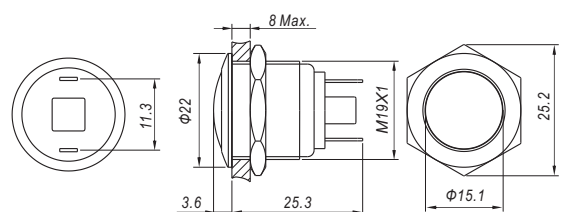
Contact Structure 1NO  
 Operation type Momentary  
 Housing Material N Nickel plated brass / S Stainless steel / A: Aluminium alloy (Black)  
 Wiring type Wiring patch(2×0.5mm)  
 Protection class IP65, IK08  
 Applicable accessories Sealing cover M12-19F / protection cover T21-19



Contact Structure 1NO  
 Operation type Momentary  
 Housing Material N Nickel plated brass / S Stainless steel  
 Wiring type Wiring patch(2×0.5mm)  
 Protection class IP65, IK08  
 Applicable accessories Sealing cover M12-19H



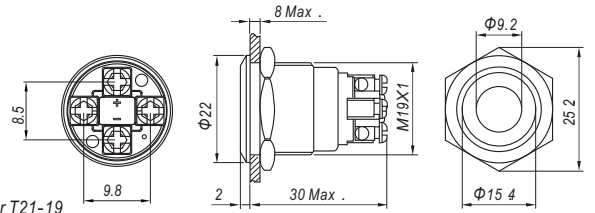
Contact Structure 1NO  
 Operation type Momentary  
 Housing Material N Nickel plated brass / S Stainless steel  
 Wiring type Wiring patch(2×0.5mm)  
 Protection class IP65, IK08  
 Applicable accessories Sealing cover M12-19H





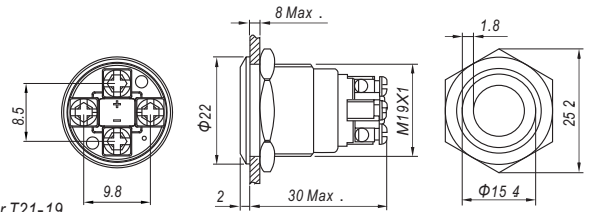
GQ19F-10D/Δ/▲/S

Contact Structure 1NO  
 Operation type Momentary  
 Color **R G Y B W**  
 Voltage ▲ 6V / 12V / 24V / 110V / 220V  
 Housing Material Stainless steel  
 Wiring type Terminals  
 Protection class IP65, IK08  
 Applicable accessories Sealing cover M12-19F / protection cover T21-19



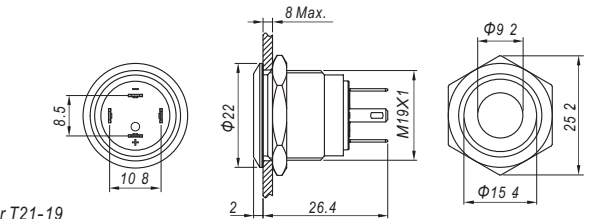
GQ19F-10E/Δ/▲/S

Contact Structure 1NO  
 Operation type Momentary  
 Color **R G Y B W**  
 Voltage ▲ 6V / 12V / 24V / 110V / 220V  
 Housing Material Stainless steel  
 Wiring type Terminals  
 Protection class IP65, IK08  
 Applicable accessories Sealing cover M12-19F / protection cover T21-19



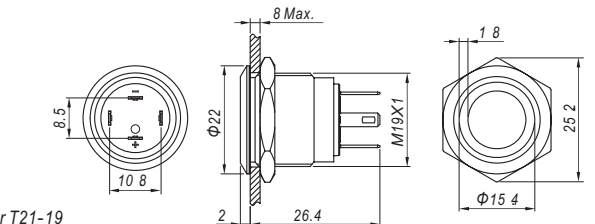
GQ19F-10D/J/Δ/▲/S

Contact Structure 1NO  
 Operation type Momentary  
 Color **R G Y B W**  
 Voltage ▲ 6V / 12V / 24V / 110V / 220V  
 Housing Material Stainless steel  
 Wiring type Wiring patch (2.8 × 0.5mm)  
 Protection class IP65, IK08  
 Applicable accessories Sealing cover M12-19F / protection cover T21-19



GQ19F-10E/J/Δ/▲/S

Contact Structure 1NO  
 Operation type Momentary  
 Color **R G Y B W**  
 Voltage ▲ 6V / 12V / 24V / 110V / 220V  
 Housing Material Stainless steel  
 Wiring type Wiring patch (2.8 × 0.5mm)  
 Protection class IP65, IK08  
 Applicable accessories Sealing cover M12-19F / protection cover T21-19



Sealing cover M12-19F



Protection cover T21-19



Panel plug M02