

P/N: WTL3L21412

SEAM SEALED OSCILLATOR 3.2*2.5mm SMD



| Customer | WTL |
|----------|-----------------------|
| | Approved by: XoXo Lee |
| | Checked by: Susan He |
| | Issued by: Sheryl Xia |

SPECIFICATION

深圳市维拓精电科技有限公司

WTL International Limited

Tel: 86-755-8267 7582 Fax: 86-755-82679302

www.wtlcrystals.com email: wtl@wtlcrystals.com

<http://www.wtlcrystals.com> Tel: 86-755-82677582 Fax: 86-755-82679302

Standard atmospheric conditions
Unless otherwise specified , the standard range of atmospheric conditions for making measurement and tests are as follow :

Ambient temperature : 25 ± 5 °C

Relative humidity : 40%~70%

If there is any doubt about the results , measurement shall be made within the following limits : Ambient temperature : 25 ± 3 °C

Relative humidity :40%~70%

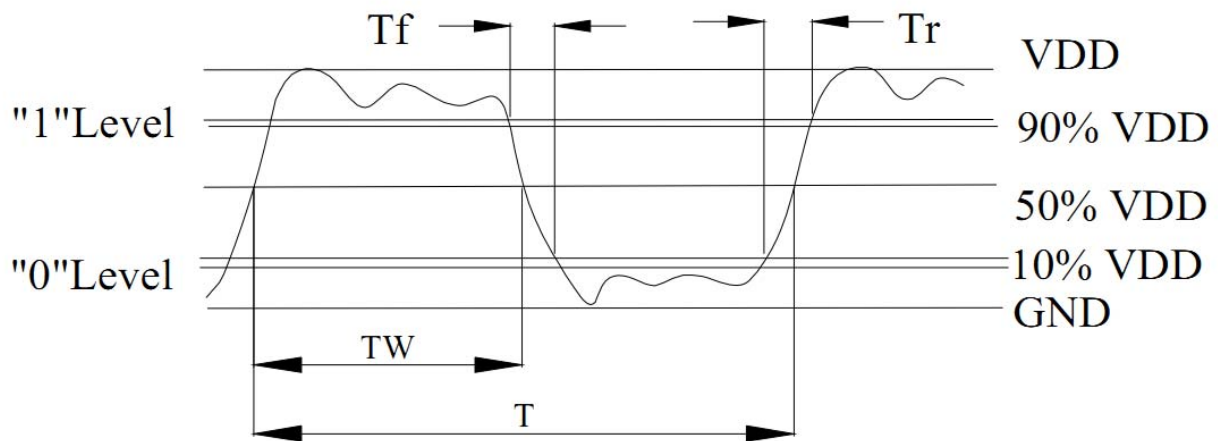
Cutting Model : AT CUT



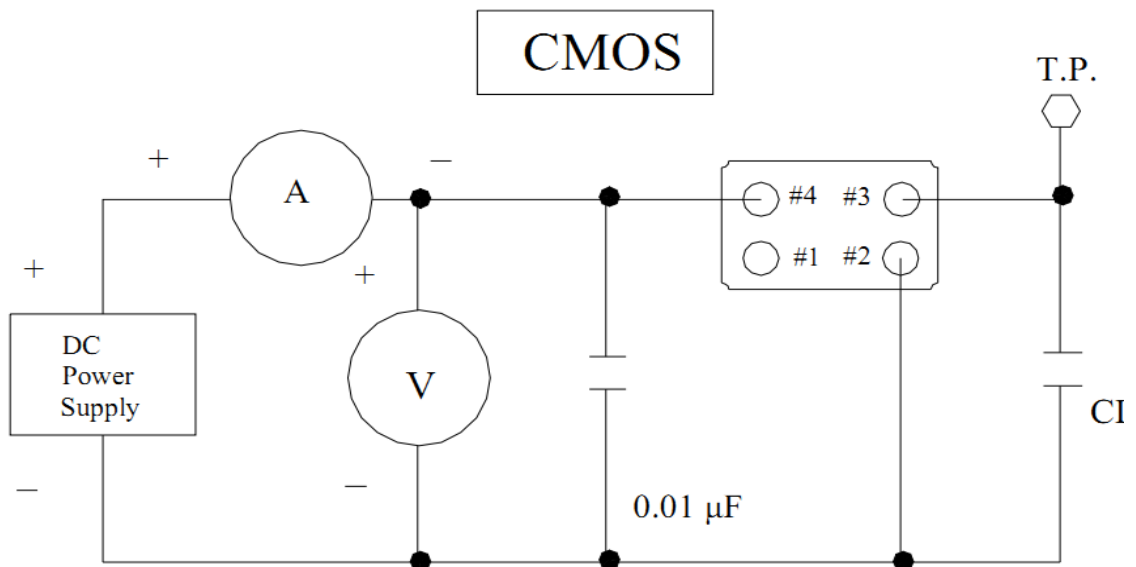
1.ELECTRICAL CHARACTERISTICS

| Parameters | ConditionModel | Value |
|-----------------------|----------------------------|----------------|
| Fan Out Type | | COMS |
| Supply Voltage | | 3.3V |
| Frequency | | 25.000MHz |
| Operating Temperature | | -40~ +85°C |
| Input Current | | 25mA max |
| All Conditions | Frequency Tolerance @ 25°C | ± 50 ppm |
| | Frequency Stability | ± 50 ppm |
| Symmetry | AT 1/2 Vdd | 45/55% |
| Output Voltage | Vol(max) | 0.33V |
| | VoH(min) | 2.97V |
| Rise/Fall Time | AT 0.1Vdd~0.9Vdd | 10ns max |
| Drive Ability | CMOS load max | 15pF |
| Start-up Time | Load RANGE | 10ms max(15pF) |

2 . C - MOS LOAD OUTPUT WAVEFORM

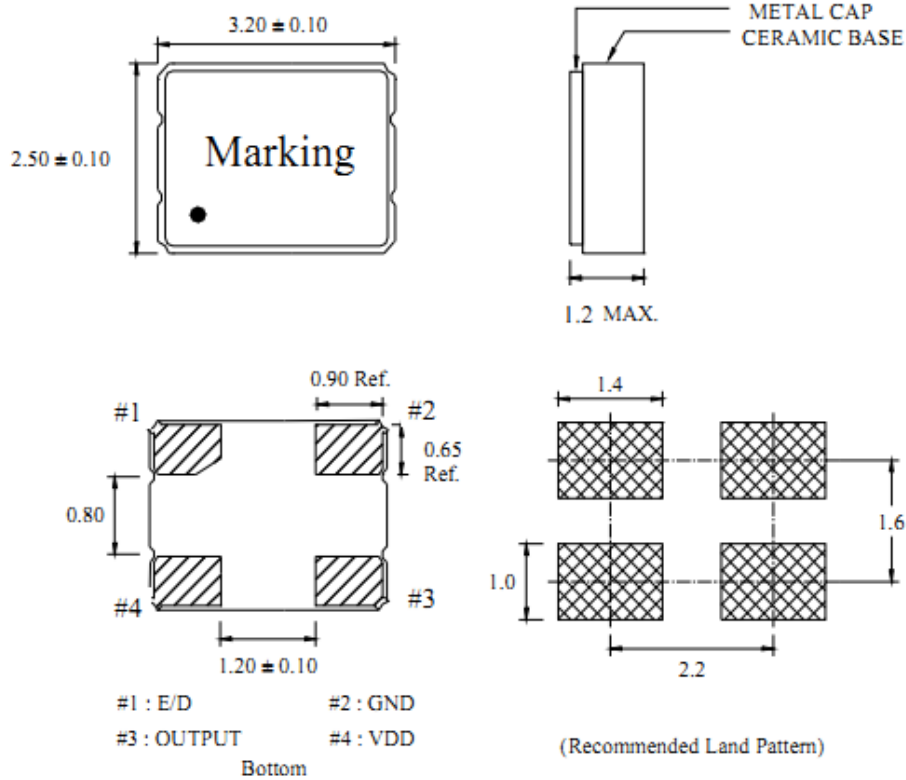


3 . C - MOS LOAD TEST CIRCUIT

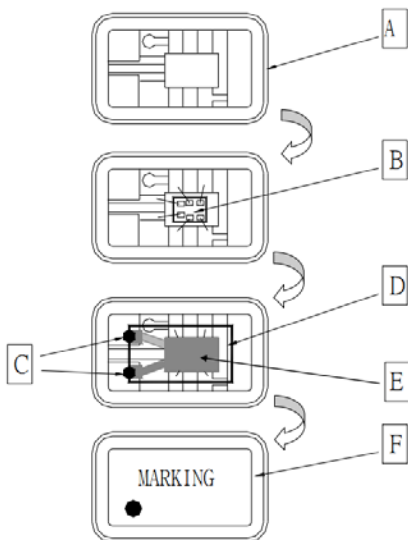


***Because SMA series has no by pass capacitor.
So,we recommend our customer to use capacitor 0.01 μF
in join Vcc and GND.

4. DIMENSION:



5. STRUCTURE ILLUSTRATION



| COMPONENTS | | MATERIALS | COMPONENTS | | MATERIALS |
|------------|---------------------|--|------------|---------------|------------------|
| A | Base (Package) | Ceramic (Al ₂ O ₃)+Kovar (Fe/Co/Ni) | D | Crystal blank | SiO ₂ |
| B | IC chip | - | E | Electrode | Cr / Ag |
| C | Conductive adhesive | Ag / Silicon resin | F | Lid | Fe/Co/Ni |

P/N: WTL3L21412

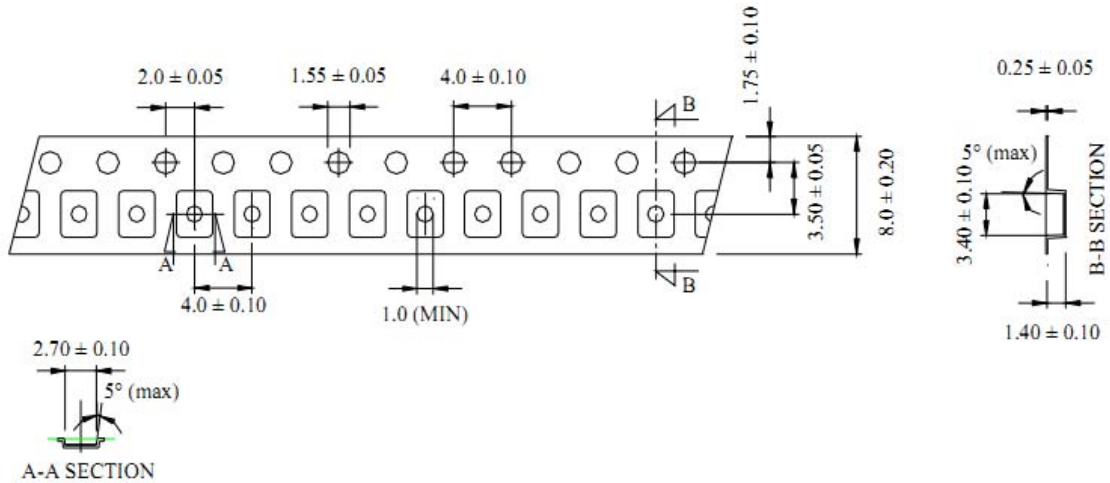


SEAM SEALED OSCILLATOR 3.2*2.5mm SMD

6. PACKING

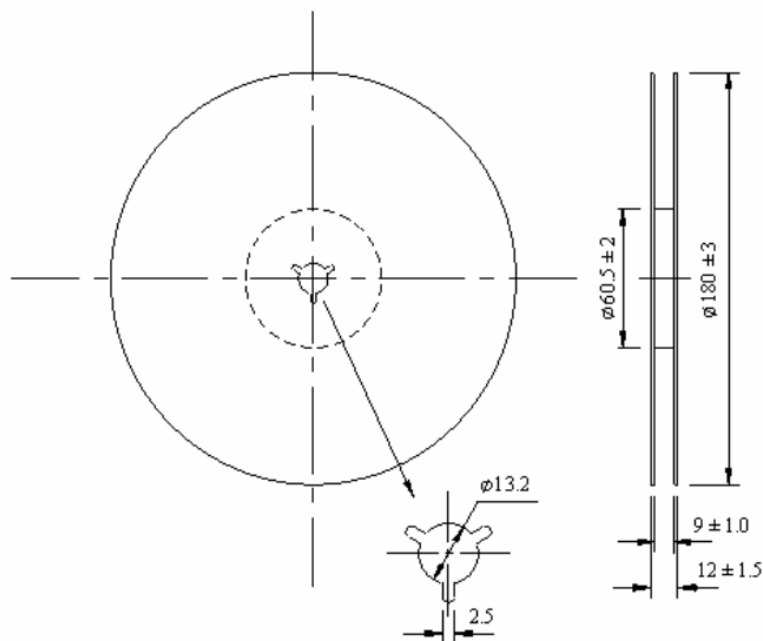
TAPE SPECIFICATION

(Unit: mm)

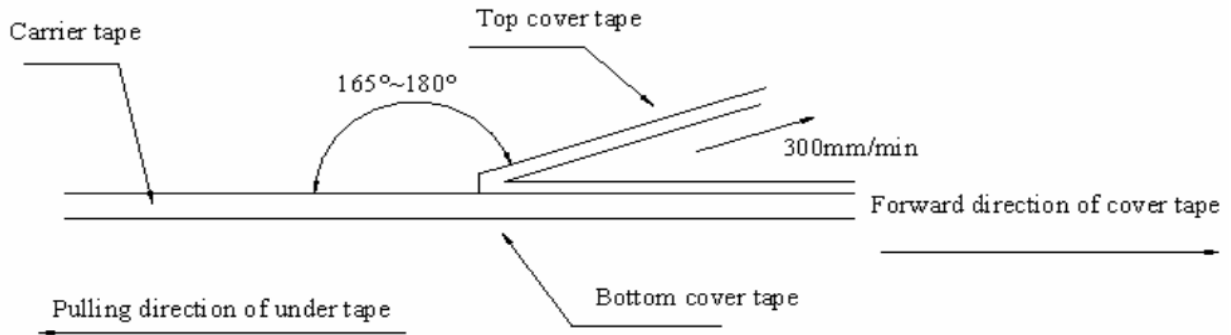


7 · OUTLINE DIMENSION

(Unit: mm)



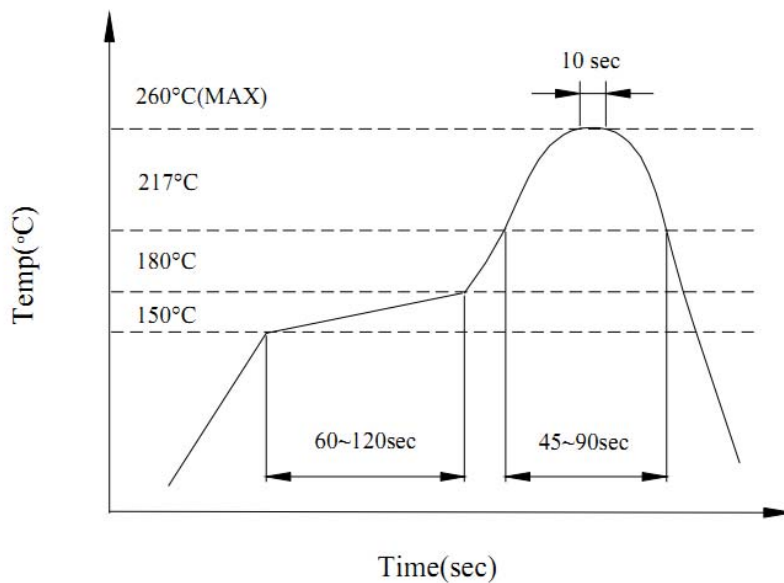
8. COVER TAPE ADHESION STRENGTH



*** In the case, the cover tape is pulled off under the above conditions, the cover tape adhesion strength should be 10.2g~71.4g Plastic tape:10.2g~71.4g

(Cover tape adhesion strength)

9. SOLDERING REFLOW PROFILE

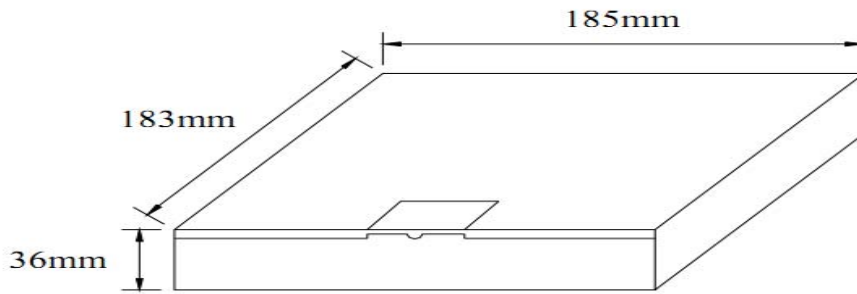


P/N: WTL3L21412

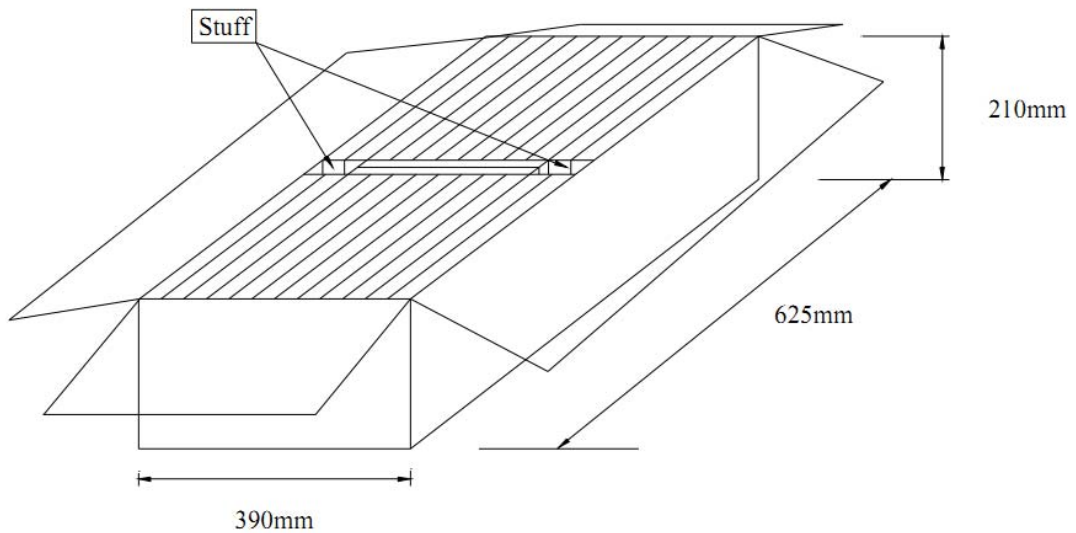


SEAM SEALED OSCILLATOR 3.2*2.5mm SMD

10. PACKING



PIZZA BOX = 3000 PCS / REEL(MAX)



SMD product packs 32 BOX = The outside box packs (3000 PCS * 32 BOX = 96000 PCS)(MAX)