



Customer	WTL
	Approved by: XoXo Lee
	Checked by: Susan He
	Issued by: Sheryl Xia

SPECIFICATION

维拓国际有限公司

WTL International Limited

Tel: 86-755-8267 7582 Fax: 86-755-82679302

www.wtlcrystals.com email: wtl@wtlcrystals.com

WTL P/N:WTL5L10772

SEAM SEALED OSCILLATOR 5X3.2MM SMD



FEATURE

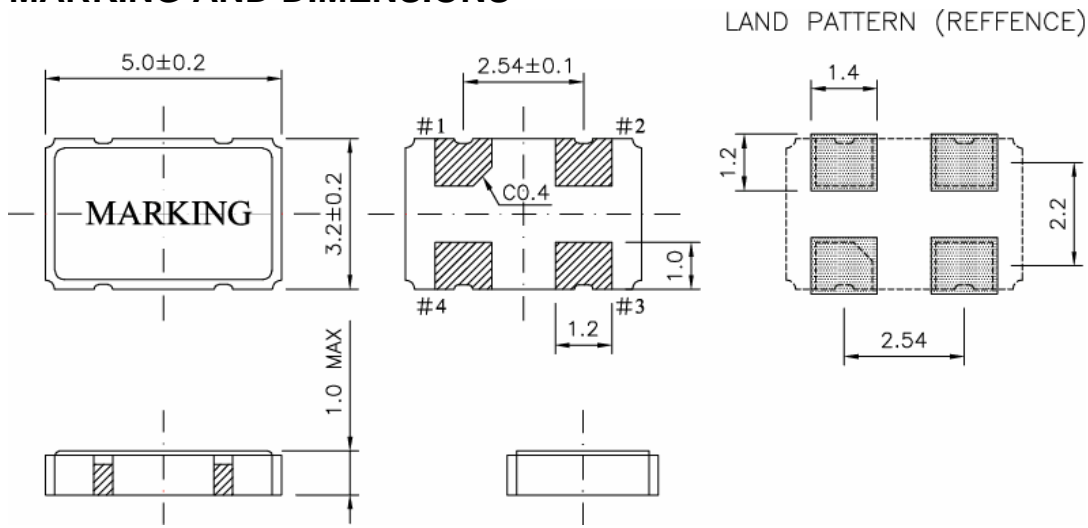
- Broad frequency range from 1.544Mhz to 125MHz
- Compact and thin ceramic package with metalized surface mounting and automatically loaded
- Reflow solder is possible
- Lower noise and current with reduced power consumption
- Built-in C-MOS IC with tri-state function
- 5V and 3.3V supply model available
- Ideally suited designed for use in PCs, NB, PCMCIA Cards, Palmtop Computer, Portable Applications



ELECTRICAL SPECIFICATIONS

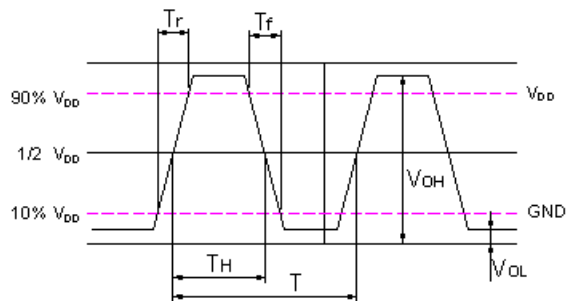
Parameters	ConditionModel	Value
Fan Out Type		HCMOS/TTL
Supply Voltage		3.3V
Frequency Range		25.000MHz
Operating Temperature		-20+70°C
Input Current	Frequency Range	25mA max
Frequency Stability	All Conditions	±50ppm
Symmetry	AT 1/2 Vdd	45/55%
Output Voltage	Vol(max)	0.33V
	VoH(min)	2.97V
Rise/Fall Time	AT 0.1Vdd~0.9Vdd	10ns max
Drive Ability	CMOS load max	30pF
Start-up Time	Load RANGE	10ms max(15pF)
E/D Function	#1 OPEN	PIN #3 ACTIVE
	#1 >=2.2V	PIN #3 ACTIVE
	#1 <=0.8V	PIN #3 INACTIVE
PAD Connection	PIN#1 E/D	PIN#3 OUT
	PIN#2 GND	PIN#4 Vdd

WTL P/N:WTL5L10772
SEAM SEALED OSCILLATOR 5X3.2MM SMD
MARKING AND DIMENSIONS



PIN NO CONNECTION
 # 1 N.C.(INH)
 # 2 GND
 # 3 OUTPUT
 # 4 +VCC

WAVEFORM CONDITIONS



REFLOW CONDITION

