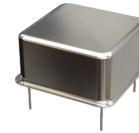


12.46 x 12.46 DIP8 Half Size Crystal Oscillator

Feature

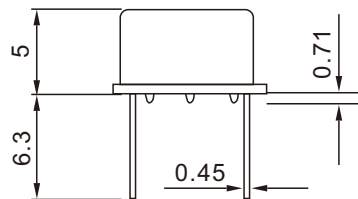
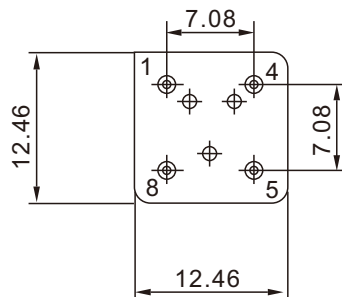
- Typical 12.46 x 12.46 x 5 mm
- Tight symmetry (45 to 55%) available.
- Operation voltage: 5V, 3.3V
- Tri-state enable/disable



Electrical Specifications

Parameter	3.3V		5.0V		Unit	
	Min.	Max.	Min.	Max.		
Fan out Type	CMOS		TTL/CMOS			
Supply Voltage Variation	3.0	3.6	4.5	5.5	V	
Frequency Range	0.25	180	0.25	180	MHz	
Frequency Stability	±25, ±50, ±100				PPM	
Operating Temperature	0~70, -20~70, -40~85				°C	
Supply Current	0.25 MHz ≒ FO<20MHz	-	10	-	15	mA
	20 MHz ≒ FO<50MHz	-	30	-	40	mA
	50 MHz ≒ FO<180MHz	-	40	-	50	mA
Duty Cycle	45	55	45	55	%	
Transition Time : Rise/Fall Time	0.25 MHz ≒ FO<20MHz	-	10	-	8	nSec
	20 MHz ≒ FO<50MHz	-	6	-	5	
	50 MHz ≒ FO<180MHz	-	5	-	4	
Input Voltage	Vol (Max)	-	0.33	-	0.4/0.5	V
	2.4V/4.5V	2.4/2.5	-	3.0	-	
Driving Ability	CMOS load max	15		15/50		pF
	TTL load max			10TTL		
Start Time	5 ms max(15pF)/ 10 ms (50pF)				mSec	
E/D Function	#1 OPEN	Pin#5 Open		Pin#5 Open		
	#1 >=2.2V	Pin#5 Open		Pin#5 Open		
	#1 <=0.8V	Pin#5 High		Pin#5 High		
Aging(@25°C 1st year)	±3	±5	±3	±5	ppm	
Storage Temp. Range	-55	125	-55	125	°C	

Dimension(mm)



Pin	Function
1	Tri-State/NC
4	GND
5	Output
8	Vdd