

3-TERMINAL 0.1A POSITIVE VOLTAGE REGULATORS

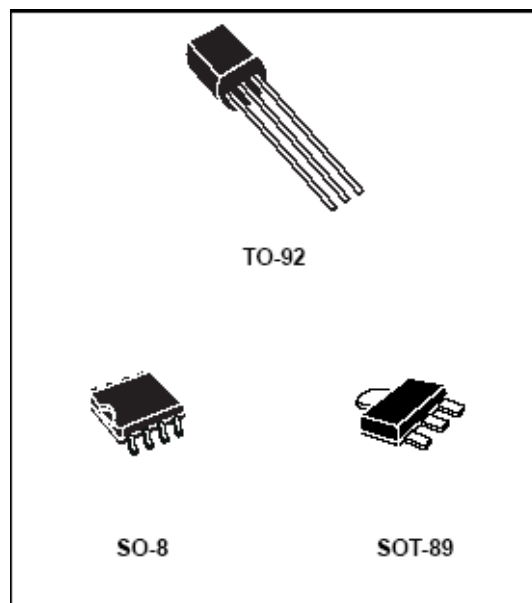
This series of fixed-voltage monolithic integrated-circuit voltage regulators is designed for a wide range of applications. These applications include on-card regulation for elimination of noise and distribution problems associated with single-point regulation. In addition, they can be used with power-pass elements to make high current voltage regulators. Each of these regulators can deliver up to 100mA output current.

The internal limiting and thermal shutdown features of these regulators make them essentially immune to overload.

When used as a replacement for a zener diode-resistor combination, an effective improvement in output impedance can be obtained together with lower-bias current.

Features

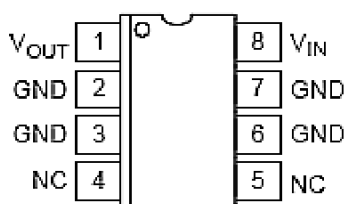
- Output current Up to 100mA
- No External Components
- Internal Thermal Overload Protection
- Internal Short-Circuit Limiting
- Output Voltage of 5V, 6V, 8V, 9V, 10V, 12V, 15V, 18V and 24V



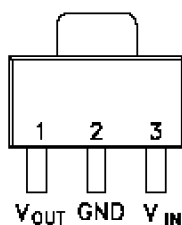
ORDERING INFORMATION

Device	Operating Temperature Range	Package	Packing
HT78LXXATZ	T _A = -40° to 125° C	TO-92	Bulk
HT78LXXARTZ		TO-92	Taping
HT78LXXARZ		SO-8	Tape & Reel
HT78LXXARSZ		SOT-89	Tape & Reel

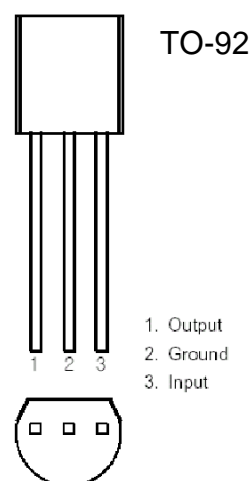
Pin Configuration



SO-8



SOT-89



1. Output
2. Ground
3. Input

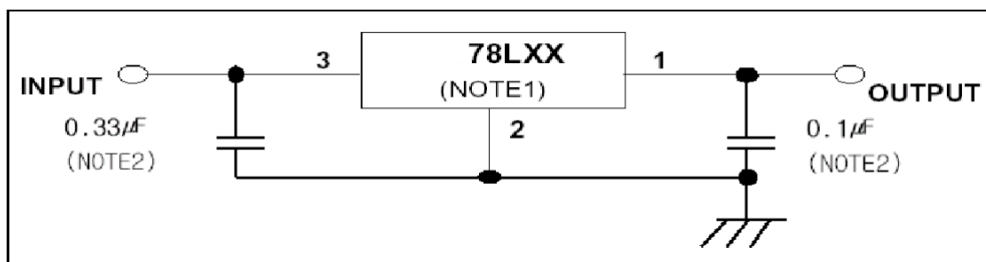
Absolute Maximum Ratings

Characteristic		Symbol	Value	Unit
Input voltage	HT78L05 ~ HT78L10	VI	20	V
	HT78L12 ~ HT78L18		35	
	HT78L24		40	
Power Dissipation	TO-92	Pd	625	mW
	SOT-89		500	
	SOP-8		625	
Operating junction temperature		Topr	-40 ~ +150	°C
Storage temperature		Tstg	-65 ~ +150	
Soldering temperature and time		Tsol	260/10sec	

* Stresses beyond those listed under "absolute maximum ratings" may cause permanent damage to the device. These are stress ratings only and functional operation of the device at these or any other conditions beyond those indicated under "recommended operating conditions" is not implied. Exposure to absolute-maximum-rated conditions for extended periods may affect device reliability.

RECOMMENDED OPERATING CONDITIONS

78Lxx		Min.	Max.	Unit
Input voltage, VI	HT78L05	7	20	V
	HT78L06	8	20	
	HT78L08	10.5	23	
	HT78L09	11.5	24	
	HT78L10	12.5	25	
	HT78L12	14.5	27	
	HT78L15	17.5	30	
	HT78L18	20.5	33	
	HT78L24	26.5	39	
Output current, Io			100	mA
Operating virtual junction temperature, Tj		-40	125	°C

TYPICAL APPLICATION

Notes

1. To specify an output voltage, substitute voltage for "XX"
2. Bypass capacitors are recommended for optimum stability and transient response and should be located as close as possible to the regulators.

HT78L05 ELECTRICAL CHARACTERISTICS

 (At specified virtual junction temperature, $V_i=10V$, $I_o=40mA$ (unless otherwise noted))

Characteristic	Symbol	Test condition *		Min	Typ.	Max.	Unit
Output voltage **	V _{out}	25°C		4.8	5	5.2	V
		1 mA ≤ I _o ≤ 40 mA 7V ≤ V _I ≤ V _{max}	-40 ~ 125°C	4.75	5	5.25	
		1 mA ≤ I _o ≤ 70 mA		4.75	5	5.25	
Line regulation	Reg line	7 ≤ V _I ≤ 20V	25°C		32	150	mV
		8 ≤ V _I ≤ 20V			26	100	
Load regulation	Reg load	1 mA ≤ I _o ≤ 100 mA	25°C		15	60	mV
		1 mA ≤ I _o ≤ 40 mA			8	30	
Bias current	I _B		25°C		3.8	6	mA
			125°C			5.5	
Bias current change	ΔI _B	9 ≤ V _I ≤ 20V	-40 ~ 125°C			1.5	mA
		1 mA ≤ I _o ≤ 40 mA				0.1	
Output noise voltage	V _N	10 Hz ≤ f ≤ 100 kHz	25°C		42		μV
Ripple rejection	RR	8 ≤ V _I ≤ 20V f=120 Hz	25°C	41	49		dB
Dropout voltage	V _D		25°C		1.7		V

Notes

- *. Pulse testing techniques are used to maintain the junction temperature as close to the ambient temperature as possible.
Thermal effects must be taken into account separately.
All characteristics are measured with a 0.33 μF capacitor across the input and a 0.1 μF capacitor across the output.
- ** This specification applies only for DC power dissipation permitted by absolute maximum ratings.

HT78L06 ELECTRICAL CHARACTERISTICS

 (At specified virtual junction temperature, $V_I=12V$, $I_O=40mA$ (unless otherwise noted))

Characteristic	Symbol	Test condition *		Min	Typ.	Max.	Unit
Output voltage **	V _{out}		25°C	5.75	6	6.25	V
		1 mA ≤ I _o ≤ 40 mA 8V ≤ V _I ≤ 20V	-40 ~ 125°C	5.7	6	6.3	
		1 mA ≤ I _o ≤ 70 mA		5.7	6	6.3	
Line regulation	Reg line	8 ≤ V _I ≤ 20V	25°C		35	175	mV
		9 ≤ V _I ≤ 20V			29	125	
Load regulation	Reg load	1 mA ≤ I _o ≤ 100 mA	25°C		16	80	mV
		1 mA ≤ I _o ≤ 40 mA			9	40	
Bias current	I _B		25°C		3.9	6	mA
			125°C			5.5	
Bias current change	ΔI _B	9 ≤ V _I ≤ 20V	-40 ~ 125°C			1.5	mA
		1 mA ≤ I _o ≤ 40 mA				0.1	
Output noise voltage	V _N	10 Hz ≤ f ≤ 100 kHz	25°C		46		μV
Ripple rejection	RR	9 ≤ V _I ≤ 19V f = 120 Hz	25°C	40	48		dB
Dropout voltage	V _D		25°C		1.7		V

Notes

- *. Pulse testing techniques are used to maintain the junction temperature as close to the ambient temperature as possible.
Thermal effects must be taken into account separately.
All characteristics are measured with a 0.33 μF capacitor across the input and a 0.1 μF capacitor across the output.
- ** This specification applies only for DC power dissipation permitted by absolute maximum ratings.

HT78L08 ELECTRICAL CHARACTERISTICS

 (At specified virtual junction temperature, $V_I=14V$, $I_o=40mA$ (unless otherwise noted))

Characteistic	Symbol	Test condition *		Min	Typ.	Max.	Unit
Output voltage **	V _{out}		25°C	7.7	8	8.3	V
		1 mA ≤ I _o ≤ 40 mA 10.5V ≤ V _I ≤ 23V	-40 ~ 125°C	7.6	8	8.4	
		1 mA ≤ I _o ≤ 70 mA		7.6	8	8.4	
Line regulation	Reg line	10.5 ≤ V _I ≤ 23V	25°C		42	175	mV
		11 ≤ V _I ≤ 23V			36	125	
Load regulation	Reg load	1 mA ≤ I _o ≤ 100 mA	25°C		18	80	mV
		1 mA ≤ I _o ≤ 40 mA			10	40	
Bias current	I _B		25°C		4	6	mA
			125°C			5.5	
Bias current change	ΔI _B	11 ≤ V _I ≤ 23V	-40 ~ 125°C			1.5	mA
		1 mA ≤ I _o ≤ 40 mA				0.1	
Output noise voltage	V _N	10 Hz ≤ f ≤ 100 kHz	25°C		54		μV
Ripple rejection	RR	13 ≤ V _I ≤ 23V f=120 Hz	25°C	37	46		dB
Dropout voltage	V _D		25°C		1.7		V

Notes

*. Pulse testing techniques are used to maintain the junction temperature as close to the ambient temperature as possible.

Thermal effects must be taken into account separately.

All characteristics are measured with a 0.33 μF capacitor across the input and a 0.1 μF capacitor across the output.

** This specification applies only for DC power dissipation permitted by absolute maximum ratings.

HT78L09 ELECTRICAL CHARACTERISTICS

 (At specified virtual junction temperature, $V_I=14V$, $I_o=40mA$ (unless otherwise noted))

Characteristic	Symbol	Test condition *		Min	Typ.	Max.	Unit
Output voltage **	V _{out}		25°C	806	9	9.4	V
		1 mA ≤ I _o ≤ 40 mA 12V ≤ V _I ≤ 24V	-40 ~ 125°C	8.55	9	9.45	
		1 mA ≤ I _o ≤ 70 mA		8.55	9	9.45	
Line regulation	Reg line	12 ≤ V _I ≤ 24V	25°C		45	175	mV
		13 ≤ V _I ≤ 24V			40	125	
Load regulation	Reg load	1 mA ≤ I _o ≤ 100 mA	25°C		19	90	mV
		1 mA ≤ I _o ≤ 40 mA			11	40	
Bias current	I _B		25°C		4.1	6	mA
			125°C			5.5	
Bias current change	ΔI _B	13 ≤ V _I ≤ 24V	-40 ~ 125°C			1.5	mA
		1 mA ≤ I _o ≤ 40 mA				0.1	
Output noise voltage	V _N	10 Hz ≤ f ≤ 100 kHz	25°C		58		μV
Ripple rejection	RR	13 ≤ V _I ≤ 23V f=120 Hz	25°C	38	45		dB
Dropout voltage	V _D		25°C		1.7		V

Notes

- *. Pulse testing techniques are used to maintain the junction temperature as close to the ambient temperature as possible.
Thermal effects must be taken into account separately.
All characteristics are measured with a 0.33 μF capacitor across the input and a 0.1 μF capacitor across the output.
- ** This specification applies only for DC power dissipation permitted by absolute maximum ratings.

HT78L10 ELECTRICAL CHARACTERISTICS

 (At specified virtual junction temperature, $V_i=16V$, $I_o=40mA$ (unless otherwise noted))

Characteristic	Symbol	Test condition *		Min	Typ.	Max.	Unit
Output voltage **	V _{out}		25°C	9.6	10	10.4	V
		1 mA ≤ I _o ≤ 40 mA 13V ≤ V _I ≤ 25V	-40 ~ 125°C	9.5	10	10.5	
		1 mA ≤ I _o ≤ 70 mA		9.5	10	10.5	
Line regulation	Reg line	13 ≤ V _I ≤ 25V	25°C		51	175	mV
		14 ≤ V _I ≤ 25V			42	125	
Load regulation	Reg load	1 mA ≤ I _o ≤ 100 mA	25°C		20	90	mV
		1 mA ≤ I _o ≤ 40 mA			11	40	
Bias current	I _B		25°C		4.2	6	mA
			125°C			5.5	
Bias current change	ΔI _B	14 ≤ V _I ≤ 25V	-40 ~ 125°C			1.5	mA
		1 mA ≤ I _o ≤ 40 mA				0.1	
Output noise voltage	V _N	10 Hz ≤ f ≤ 100 kHz	25°C		62		μV
Ripple rejection	RR	15 ≤ V _I ≤ 25V f=120 Hz	25°C	37	44		dB
Dropout voltage	V _D		25°C		1.7		V

Notes

*. Pulse testing techniques are used to maintain the junction temperature as close to the ambient temperature as possible.

Thermal effects must be taken into account separately.

All characteristics are measured with a 0.33 μF capacitor across the input and a 0.1 μF capacitor across the output.

** This specification applies only for DC power dissipation permitted by absolute maximum ratings.

HT78L12 ELECTRICAL CHARACTERISTICS

 (At specified virtual junction temperature, $V_i=17V$, $I_o=40mA$ (unless otherwise noted))

Characteristic	Symbol	Test condition *		Min	Typ.	Max.	Unit
Output voltage **	Vout		25°C	11.5	12	12.5	V
		1 mA ≤ I _o ≤ 40 mA 14V ≤ V _I ≤ 27V	-40 ~ 125°C	11.4	12	12.6	
		1 mA ≤ I _o ≤ 70 mA		11.4	12	12.6	
Line regulation	Reg line	14.5 ≤ V _I ≤ 27V	25°C		55	250	mV
		16 ≤ V _I ≤ 27V			49	200	
Load regulation	Reg load	1 mA ≤ I _o ≤ 100 mA	25°C		22	100	mV
		1 mA ≤ I _o ≤ 40 mA			13	50	
Bias current	I _B		25°C		4.3	6.5	mA
			125°C			6	
Bias current change	ΔI _B	16 ≤ V _I ≤ 27V	-40 ~ 125°C			1.5	mA
		1 mA ≤ I _o ≤ 40 mA				0.1	
Output noise voltage	V _N	10 Hz ≤ f ≤ 100 kHz	25°C		70		μV
Ripple rejection	RR	15 ≤ V _I ≤ 25V f=120 Hz	25°C	37	42		dB
Dropout voltage	V _D		25°C		1.7		V

Notes

*. Pulse testing techniques are used to maintain the junction temperature as close to the ambient temperature as possible.

Thermal effects must be taken into account separately.

All characteristics are measured with a 0.33 μF capacitor across the input and a 0.1 μF capacitor across the output.

** This specification applies only for DC power dissipation permitted by absolute maximum ratings.

HT78L15 ELECTRICAL CHARACTERISTICS

 (At specified virtual junction temperature, $V_i=19V$, $I_o=40mA$ (unless otherwise noted))

Characteristic	Symbol	Test condition *		Min	Typ.	Max.	Unit
Output voltage **	V _{out}		25°C	14.4	15	15.6	V
		1 mA ≤ I _o ≤ 40 mA 17.5V ≤ V _i ≤ 30V	-40 ~ 125°C	14.25	15	15.75	
		1 mA ≤ I _o ≤ 70 mA		14.25	15	15.75	
Line regulation	Reg line	17.5 ≤ V _i ≤ 30V	25°C		65	300	mV
		19 ≤ V _i ≤ 30V			58	250	
Load regulation	Reg load	1 mA ≤ I _o ≤ 100 mA	25°C		25	150	mV
		1 mA ≤ I _o ≤ 40 mA			15	75	
Bias current	I _B		25°C		4.2	6.5	mA
			125°C			6	
Bias current change	ΔI _B	19 ≤ V _i ≤ 30V	-40 ~ 125°C			1.5	mA
		1 mA ≤ I _o ≤ 40 mA				0.1	
Output noise voltage	V _N	10 Hz ≤ f ≤ 100 kHz	25°C		82		μV
Ripple rejection	RR	18.5 ≤ V _i ≤ 28.5V f=120 Hz	25°C	37	44		dB
Dropout voltage	V _D		25°C		1.7		V

Notes

*. Pulse testing techniques are used to maintain the junction temperature as close to the ambient temperature as possible.

Thermal effects must be taken into account separately.

All characteristics are measured with a 0.33 μF capacitor across the input and a 0.1 μF capacitor across the output.

** This specification applies only for DC power dissipation permitted by absolute maximum ratings.

HT78L18 ELECTRICAL CHARACTERISTICS

 (At specified virtual junction temperature, $V_I=23V$, $I_O=40mA$ (unless otherwise noted))

Characteristic	Symbol	Test condition *		Min	Typ.	Max.	Unit
Output voltage **	V _{out}		25°C	17.3	18	18.7	V
		1 mA ≤ I _o ≤ 40 mA 20.5V ≤ V _I ≤ 33V	-40 ~ 125°C	17.1	18	18.9	
		1 mA ≤ I _o ≤ 70 mA		17.1	18	18.9	
Line regulation	Reg line	20.5 ≤ V _I ≤ 33V	25°C		70	360	mV
		22 ≤ V _I ≤ 33V			64	300	
Load regulation	Reg load	1 mA ≤ I _o ≤ 100 mA	25°C		27	180	mV
		1 mA ≤ I _o ≤ 40 mA			19	90	
Bias current	I _B		25°C		4.7	6.5	mA
			125°C			6	
Bias current change	ΔI _B	22 ≤ V _I ≤ 33V	-40 ~ 125°C			1.5	mA
		1 mA ≤ I _o ≤ 40 mA				0.1	
Output noise voltage	V _N	10 Hz ≤ f ≤ 100 kHz	25°C		82		μV
Ripple rejection	RR	21.5 ≤ V _I ≤ 31.5V f=120 Hz	25°C	32	36		dB
Dropout voltage	V _D		25°C		1.7		V

Notes

- *. Pulse testing techniques are used to maintain the junction temperature as close to the ambient temperature as possible.
Thermal effects must be taken into account separately.
All characteristics are measured with a 0.33 μF capacitor across the input and a 0.1 μF capacitor across the output.
- ** This specification applies only for DC power dissipation permitted by absolute maximum ratings.

HT78L24 ELECTRICAL CHARACTERISTICS

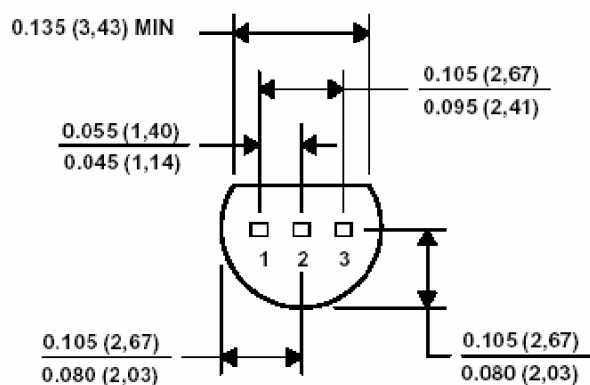
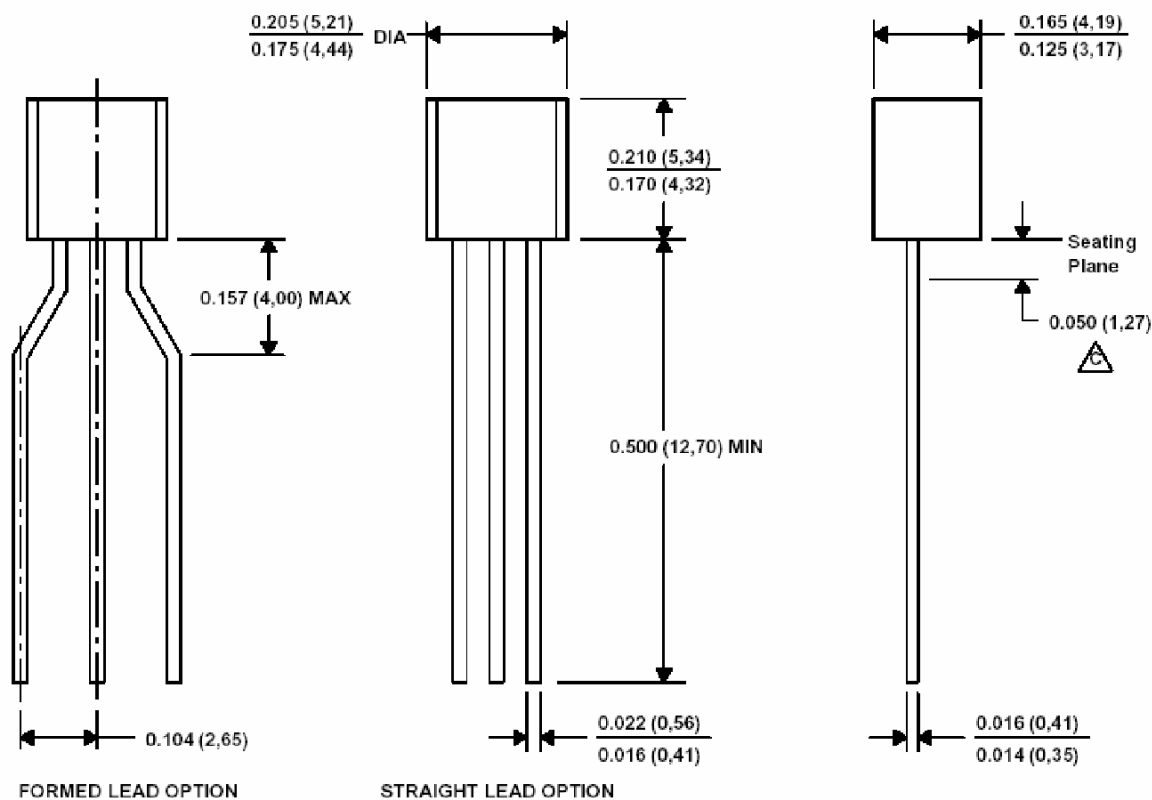
 (At specified virtual junction temperature, $V_I=26V$, $I_O=40mA$ (unless otherwise noted))

Characteristic	Symbol	Test condition *		Min	Typ.	Max.	Unit
Output voltage **	V _{out}		25°C	23	24	25	V
		1 mA ≤ I _o ≤ 40 mA 26.5V ≤ V _I ≤ 39V	-40 ~ 125°C	22.8	24	25.2	
		1 mA ≤ I _o ≤ 70 mA		22.8	24	25.2	
Line regulation	Reg line	26.5 ≤ V _I ≤ 39V	25°C		95	480	mV
		29 ≤ V _I ≤ 39V			78	400	
Load regulation	Reg load	1 mA ≤ I _o ≤ 100 mA	25°C		41	240	mV
		1 mA ≤ I _o ≤ 40 mA			28	120	
Bias current	I _B		25°C		4.8	6.5	mA
			125°C			6	
Bias current change	ΔI _B	28 ≤ V _I ≤ 39V	-40 ~ 125°C			1.5	mA
		1 mA ≤ I _o ≤ 40 mA				0.1	
Output noise voltage	V _N	10 Hz ≤ f ≤ 100 kHz	25°C		82		μV
Ripple rejection	RR	27.5 ≤ V _I ≤ 37.5V f=120 Hz	25°C	30	33		dB
Dropout voltage	V _D		25°C		1.7		V

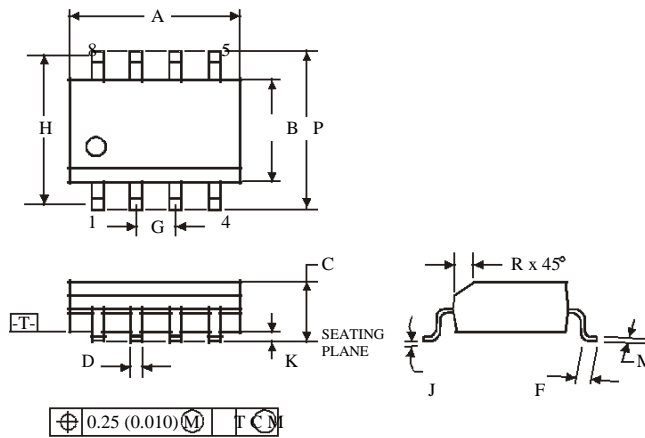
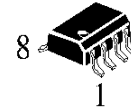
Notes

- *. Pulse testing techniques are used to maintain the junction temperature as close to the ambient temperature as possible. Thermal effects must be taken into account separately.
All characteristics are measured with a 0.33 μF capacitor across the input and a 0.1 μF capacitor across the output.
- ** . This specification applies only for DC power dissipation permitted by absolute maximum ratings.

• TO-92



• SO-8

D SUFFIX SOIC
(MS - 012AA)


Symbol	Dimension, mm	
	MIN	MAX
A	4.8	5
B	3.8	4
C	1.35	1.75
D	0.33	0.51
F	0.4	1.27
G	1.27	
H	5.72	
J	0°	8°
K	0.1	0.25
M	0.19	0.25
P	5.8	6.2
R	0.25	0.5

NOTES:

1. Dimensions A and B do not include mold flash or protrusion.
2. Maximum mold flash or protrusion 0.15 mm (0.006) per side for A; for B - 0.25 mm (0.010) per side.