

MLCCBASE

Many Micro Passive & Semiconductor

MAX3483/MAX3485/
MAX3486/MAX3488/
MAX3490/MAX3491

3.3V-Powered, 10Mbps and Slew-Rate-Limited
True RS-485/RS-422 Transceivers

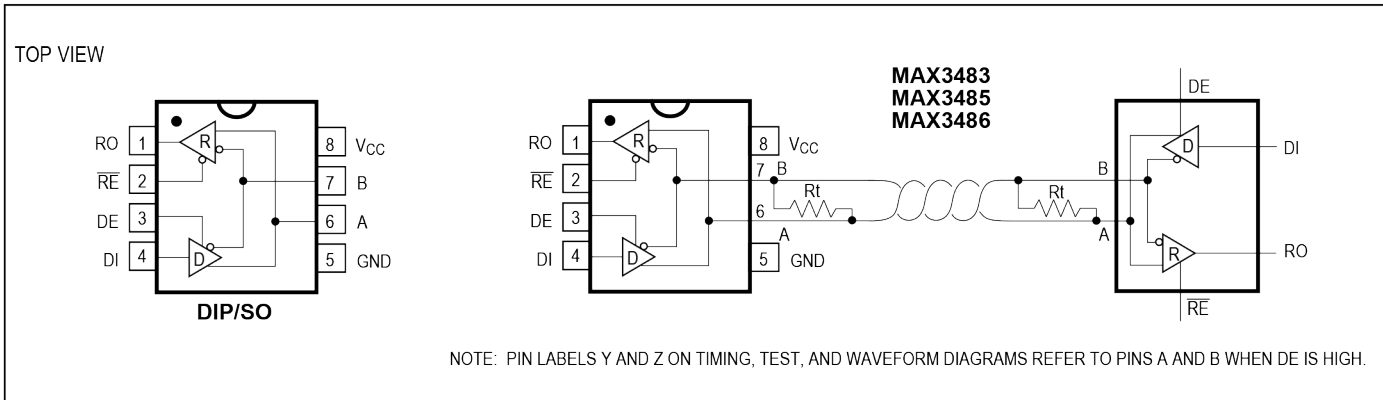


Figure 1. MAX3483/MAX3485/MAX3486 Pin Configuration and Typical Operating Circuit

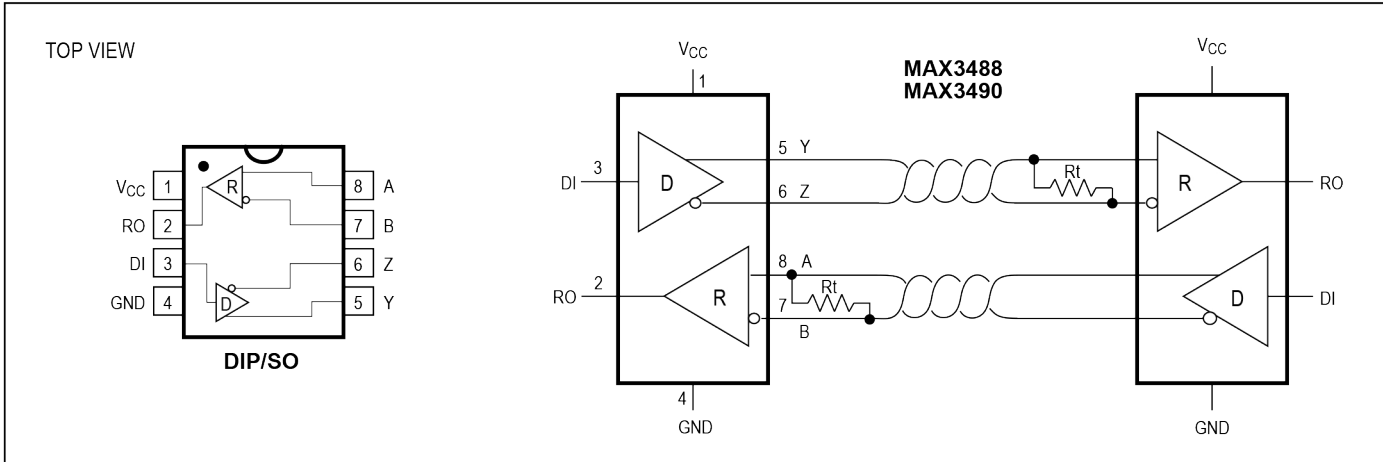


Figure 2. MAX3488/MAX3490 Pin Configuration and Typical Operating Circuit

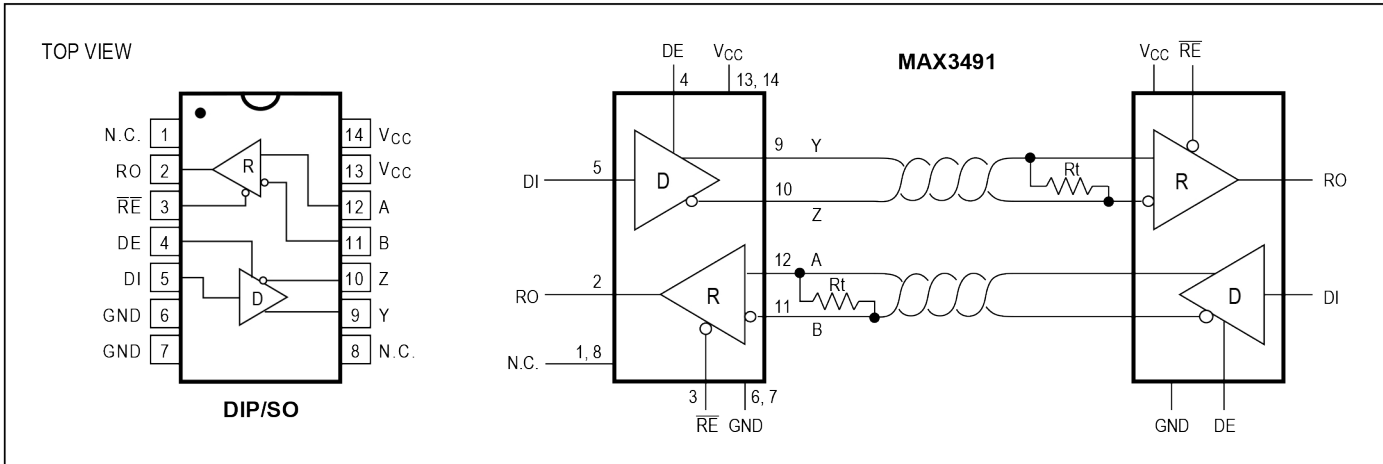


Figure 3. MAX3491 Pin Configuration and Typical Operating Circuit

MLCCBASE

Many Micro Passive & Semiconductor

安装风格	SMD/SMT	高度	1.5mm(Max)
封装/箱体	SO-8	输入电压	3.3V
系列	MAX3485	长度	5mm(Max)
功能	Transceiver	输出电流	+/- 8mA to +/- 60mA
数据速率	10 Mbps	输出电压	- 7.5V to + 12.5V
接收机数量	1 Receiver	宽度	4mm(Max)
工作电源电压	3.3V	Pd-功率耗散	727mW
工作电源电流	1mA	产品类型	RS-422/RS-485 Interface IC
最小工作温度	0°C	传播延迟时间	22ns
最大工作温度	+70°C	工厂包装数量	2500
封装	Cut Tape	子类别	Interface ICs
封装	Reel	零件号别名	MAX3485

MLCCBASE

Many Micro Passive & Semiconductor

MAX3483/MAX3485/
MAX3486/MAX3488/
MAX3490/MAX3491

3.3V-Powered, 10Mbps and Slew-Rate-Limited
True RS-485/RS-422 Transceivers

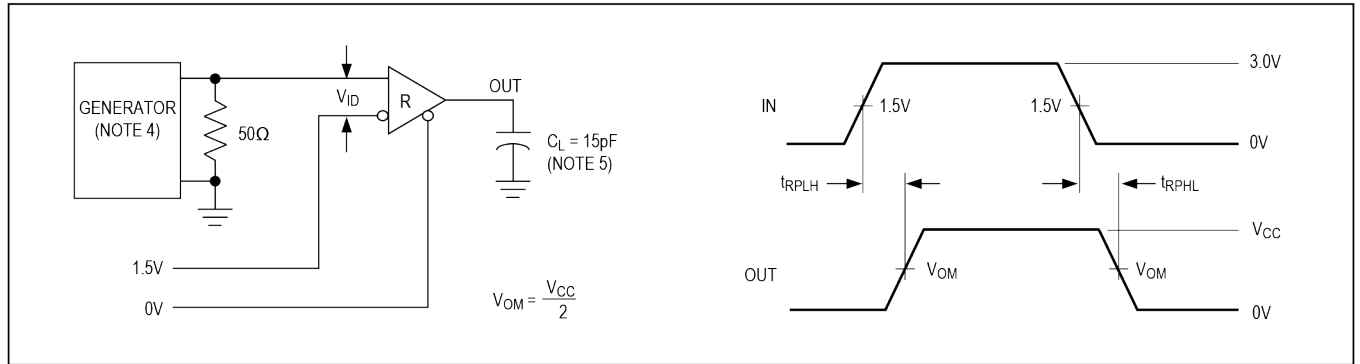


Figure 11. Receiver Propagation Delay

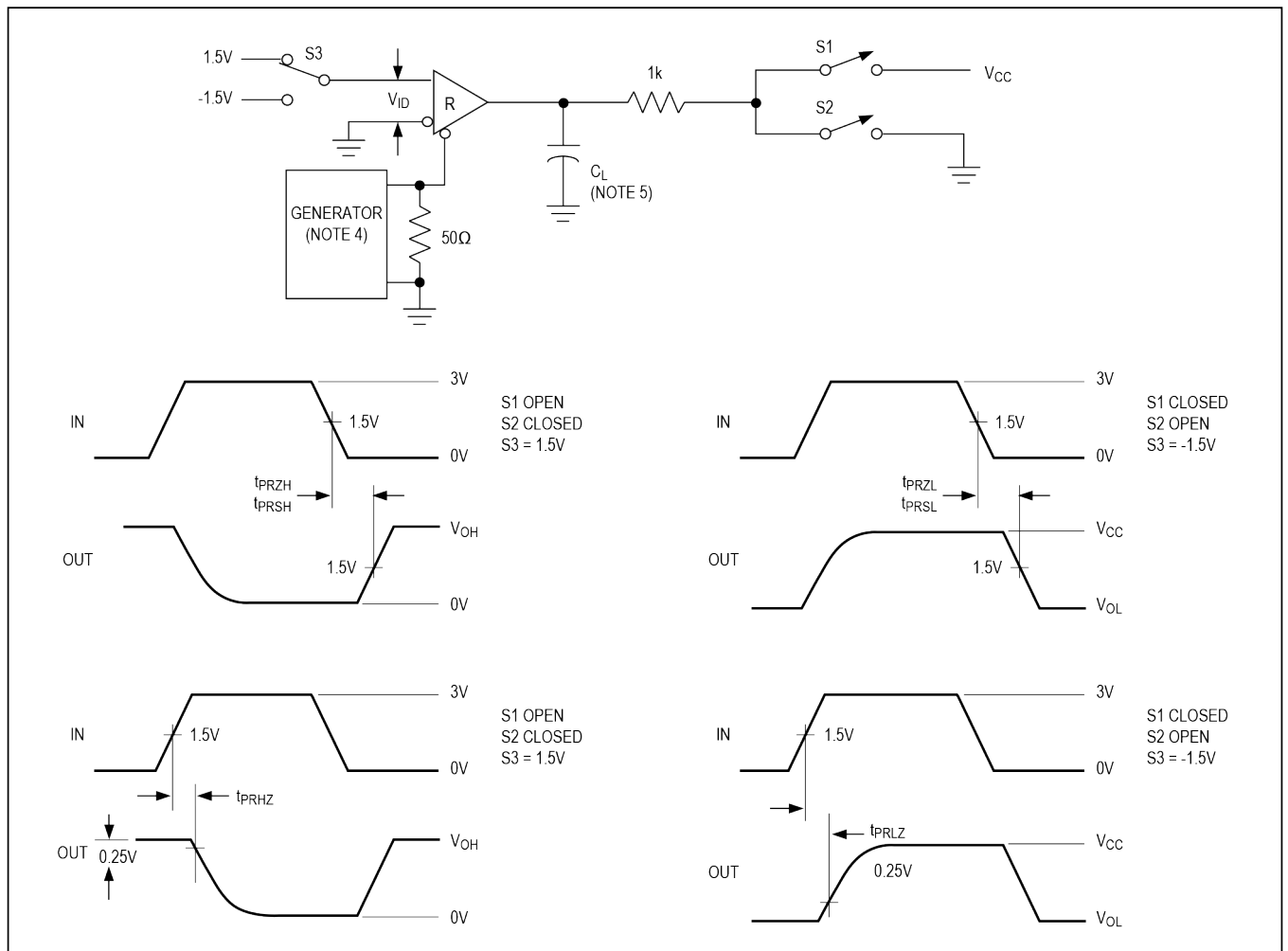


Figure 12. Receiver Enable and Disable Times

Note 4: The input pulse is supplied by a generator with the following characteristics: PRR = 250kHz, 50% duty cycle, $t_r \leq 6.0\text{ns}$, $Z_O = 50\Omega$.

Note 5: C_L includes probe and stray capacitance.

MLCCBASE

Many Micro Passive & Semiconductor

ECCN Code	EAR99	Samacsys Description	RS-422/RS-485 Interface IC
Differential Output	YES	High Level Input Current-Max	0.000002 A
Interface IC Type	LINE TRANSCEIVER	JESD-30 Code	R-PDSO-G8
Length	4.9 mm	Number of Functions	1
Operating Temperature-Max	70°C	Output Characteristics	3-STATE
Output Polarity	COMPLEMENTARY	Package Code	SOP
Package Shape	RECTANGULAR	Peak Reflow Temperature (Cel)	260
Qualification status	Not Qualified	Receiver Number of Bits	1
Subcategory	Line Driver or Receivers	Supply Voltage-Max	3.6V
HTS Code	8542.39.00.01	compound_id	1244798
Input Characteristics	DIFFERENTIAL SCHMITTRIGGER	Additional Feature	COMMON IO; 1RECEIVER ACTIVE UNDER SHUTDOWN; TRISTABLE RECEIVER
Driver Number of Bits	1	Risk Rank	0.81
Interface Standard	EIA-422;EIA-485	JESD-609 Code	e3
Moisture Sensitivity Level	1	Number of Terminals	8
Out Swing-Min	1.5V	Output Low Current-Max	0.0025 A
Package Body Material	PLASTIC/EPOXY	Package Equivalence Code	SOP8,25
Package Style	SMALL OUTLINE	Power Supplies	3.3V
Receive Delay-Max	90 ns	Seated Height-Max	1.75 mm
Supply Current-Max	2.2 mA	Supply Voltage-Min	3V