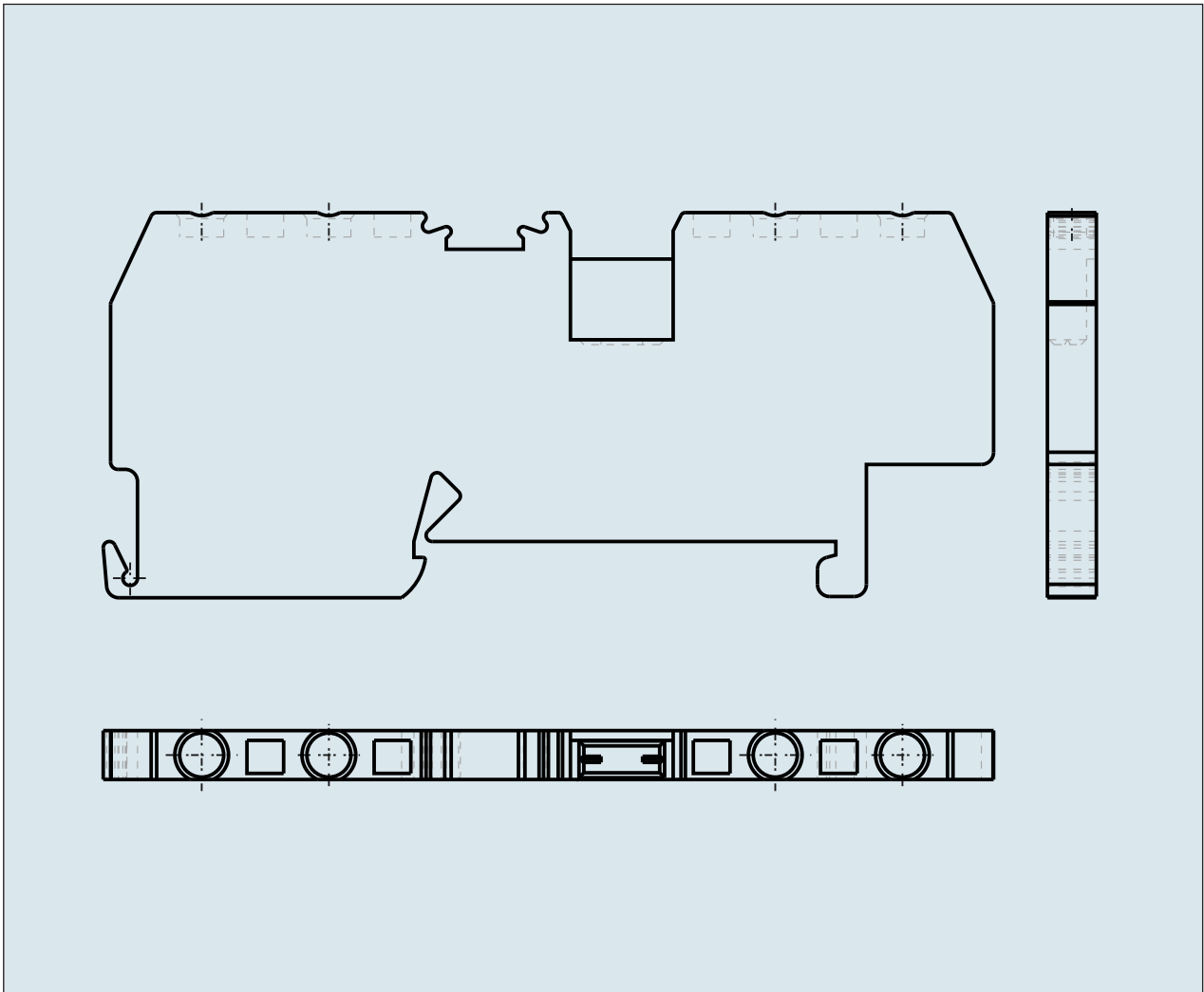
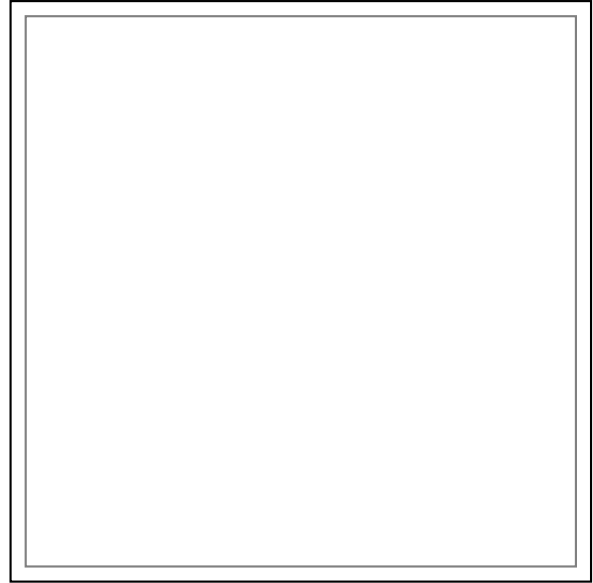
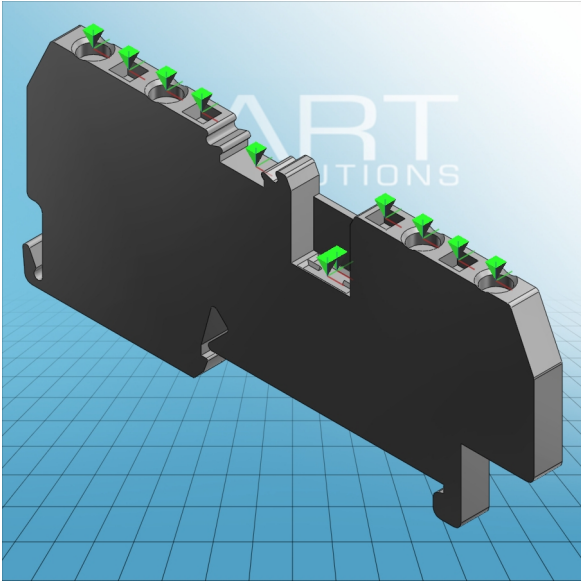




**4-CONDUCTOR THROUGH TERMINAL
BLOCK CENTRE MARKING for DIN 35
rail**
279-831





**4-CONDUCTOR THROUGH TERMINAL
BLOCK CENTRE MARKING for DIN 35
rail
279-831**

ITEM-NO. (ITEM-NO.)	279-831
Cross section1 (Cross section / mm²)	0.08 - 1.5
Cross section2 (Cross section / AWG)	28 - 16
Strip length (Strip length / mm)	8 - 9
Measured voltage (Measured voltage / V)	800
Measured shock voltage (Measured shock voltage / kV)	8
Pollution degree (Pollution degree)	3
Current intensity (Current intensity / A)	18
Height (Height / mm)	27
Width (Width / mm)	4
Depth (Depth / mm)	73
No. of connection Points (No. of connection Points)	4
No. of potentials (No. of potentials)	1
COLOR (COLOR)	grau
Comment (Comment)	