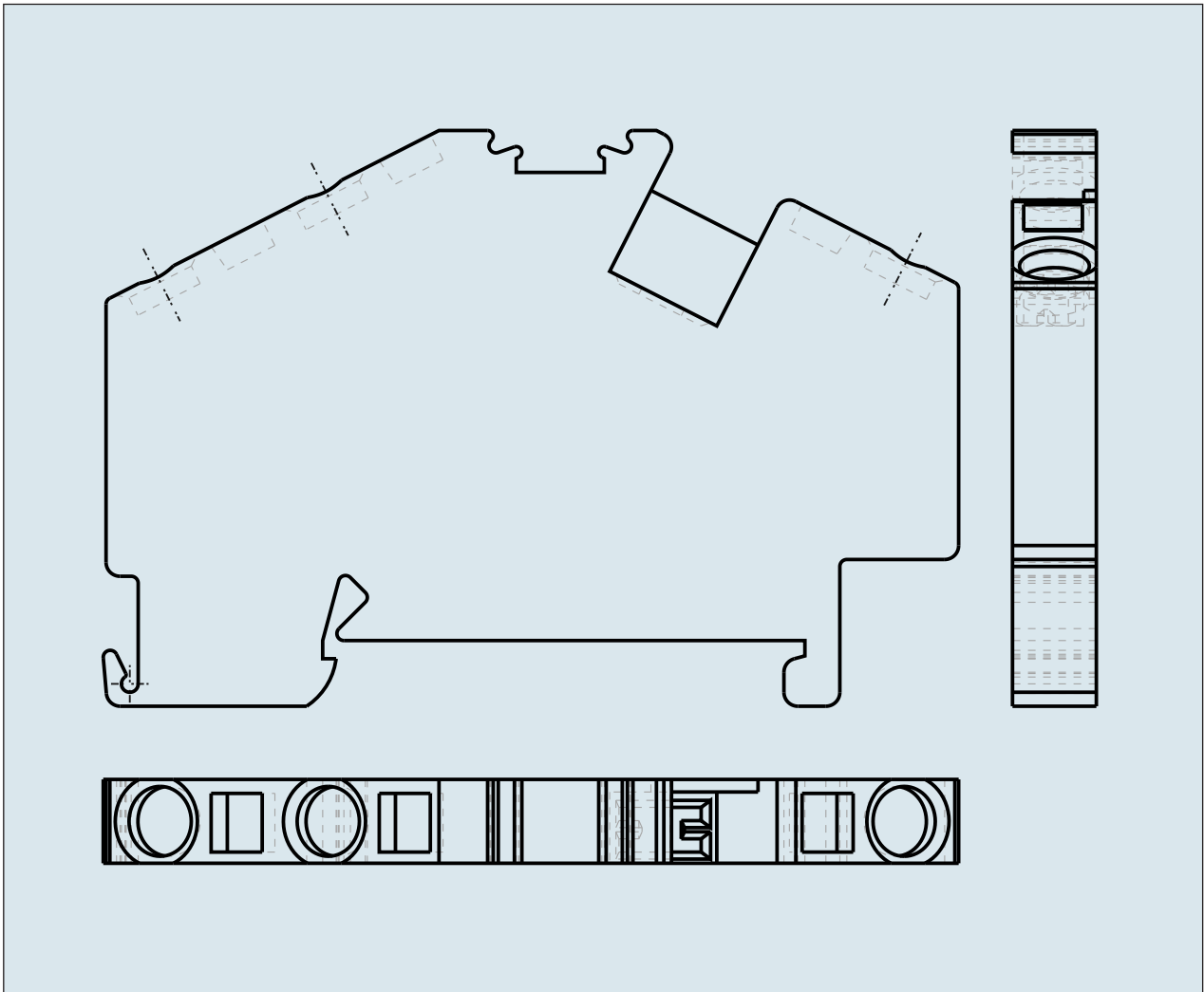
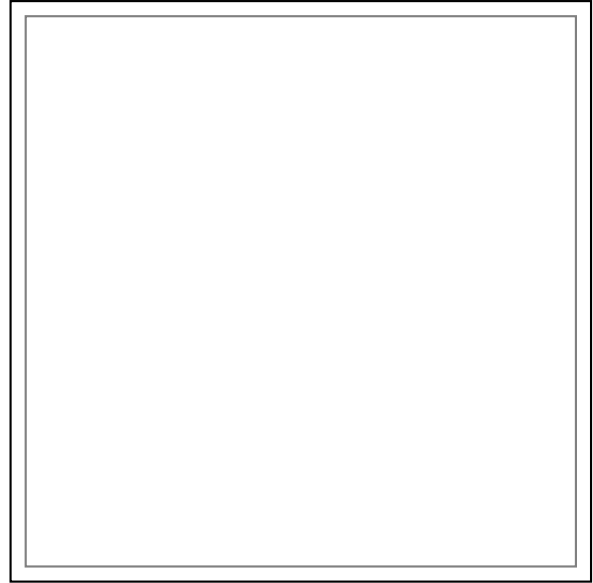
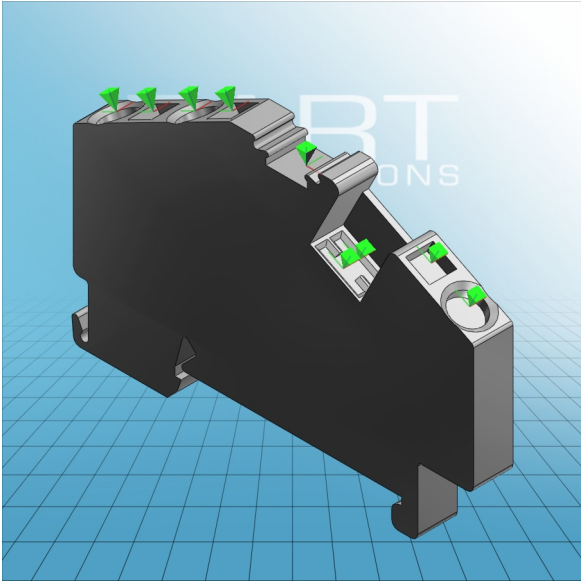




**3-CONDUCTOR THROUGH TERMINAL
BLOCK CENTRE MARKING for DIN 35
rail**
281-631





**3-CONDUCTOR THROUGH TERMINAL
BLOCK CENTRE MARKING for DIN 35
rail
281-631**

ITEM-NO. (ITEM-NO.)	281-631
Cross section1 (Cross section / mm²)	0.08 - 4
Cross section2 (Cross section / AWG)	28 - 12
Strip length (Strip length / mm)	9 - 10
Measured voltage (Measured voltage / V)	800
Measured shock voltage (Measured shock voltage / kV)	8
Pollution degree (Pollution degree)	3
Current intensity (Current intensity / A)	32
Height (Height / mm)	37
Width (Width / mm)	6
Depth (Depth / mm)	61.5
No. of connection Points (No. of connection Points)	3
No. of potentials (No. of potentials)	1
COLOR (COLOR)	grau
WEIGHT (WEIGHT / g)	10.401
Comment (Comment)	