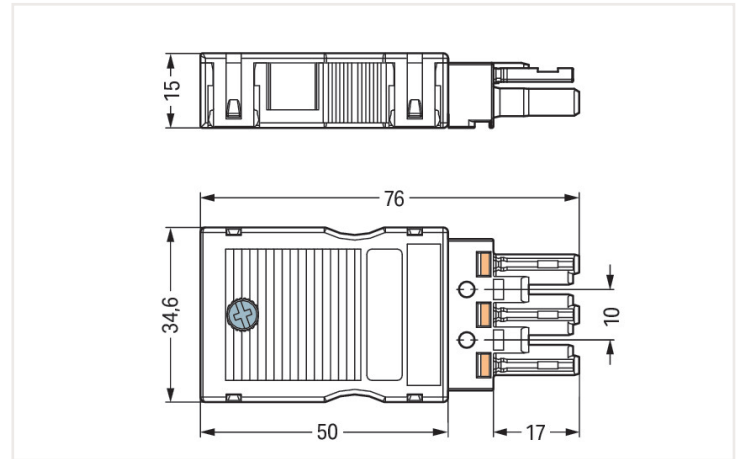


Data sheet | Item number: 770-103

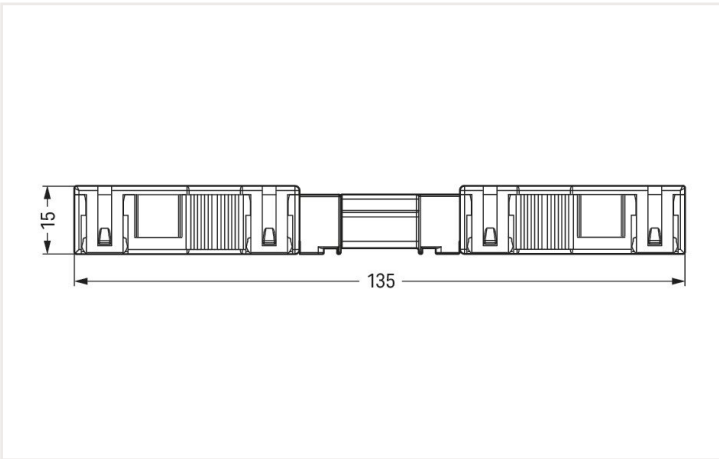
Socket; with strain relief housing; 3-pole; Cod. A; 4,00 mm²; black



<https://www.wago.com/770-103>



Dimensions in mm



Dimensions in mm

Overall length when mated

Female connector/socket *WINSTA*® MIDI rated current 25 A

The *WINSTA*® MIDI female connector/socket with protection against mismatching is the pluggable solution for your use in control cabinets, for lighting connections or on PCBs. Whether on PCBs, in control cabinets or for connecting lights – pluggable installation connectors from WAGO allow you to establish connections according to a huge variety of requirements in next to no time. The color coding and mechanical coding of the pluggable installation connector ensure error-free installation of the individual components – including protection against mismatching. The *WINSTA*® MIDI pluggable installation connector with A coding in white or black is usually used for general mains applications in power distribution. Important parameters in the selection of a pluggable installation connector are the rated current and voltage: They tell us about the product's domains of use. This product has a current rating of 25 A – as a result it is also suitable for robust loads. The *WINSTA*® MIDI Pluggable Connection System with Push-in CAGE CLAMP® spring pressure connection technology facilitates safe electrification. Due to the integrated test slot, it is possible to check connections even when they are plugged in. This saves time, labor, and money. The strip length is 55 mm.

Lower costs through fast commissioning and elimination of service expenses – solutions from *WINSTA*® MIDI

WINSTA® is the pluggable connection system that is perfectly tailored to the strict requirements of electrical installation. It offers error-free installation of cables and components, quickly and reliably. Take advantage of the pluggable version of our maintenance-free spring pressure connection technology too! Plan your installation with *WINSTA*® MIDI pluggable installation connectors with strain relief hosting from WAGO.

- protection against mismatching eliminates errors
- for automation controllers
- with A coding for a great number of applications
- flexible installation to save space
- quick replacement of defective units during ongoing operation

Item includes



Item no.: 770-503

1

Item no.: 770-203

1

Strain relief housing; 3-pole; for 2 cables;
8.0 ... 11.5 mm; 55 mm; blackSocket; 3-pole; Cod. A; 4,00 mm²; black

Electrical data

Note on contact resistance	approx. 1 mΩ of contact resistance approx. 0.25 mΩ contact transition plug/ socket
----------------------------	--

Ratings per IEC/EN

Ratings per	IEC/EN 60664-1
Nominal voltage (III/3)	250 V
Rated impulse voltage (III/3)	4 kV
Rated current	25 A
Legend (ratings)	(III / 3) ≙ Overvoltage category III / Pollution degree 3

Ratings per UL

Note for the US market	Some versions may also be used for current interruption in accordance with the UL certificate in select applications with currents below 16 A and voltages up to 600 V. For further information, please contact your local sales office.
Rated voltage (UL 1977)	600 V
Rated current UL 1977	23 A

Connection data

Total number of connection points	6
Total number of potentials	3
Number of test slots	3

Connection 1

Connection technology	Push-in CAGE CLAMP®
Actuation type	Operating tool Push-in
Nominal cross-section	4 mm ² / 12 AWG
Solid conductor	0.5 ... 4 mm ² / 20 ... 12 AWG
Solid conductor; push-in termination	1.5 ... 4 mm ² / 16 ... 12 AWG
Stranded conductor	0.5 ... 2.5 mm ² / 20 ... 14 AWG
Fine-stranded conductor	0.5 ... 4 mm ² / 20 ... 12 AWG
Fine-stranded conductor; with insulated ferrule	0.25 ... 1.5 mm ² / 20 ... 16 AWG
Fine-stranded conductor; with uninsulated ferrule	0.25 ... 2.5 mm ² / 20 ... 14 AWG
Fine-stranded conductor; with ferrule; push-in termination	1.5 mm ² / 16 AWG
Strip length	9 mm / 0.35 inches
Pole number	3
Connectable sheathed cable diameter	8 ... 11.5 mm
Conductor entry direction to mating direction	0°
Strip length (outer insulation)	55 mm

Physical data

Pin spacing	10 mm / 0.394 inches
Width	34.6 mm / 1.362 inches
Height	15 mm / 0.591 inches
Depth	75.9 mm / 2.988 inches

Mechanical data

Application	General mains applications
Coding	A
Variable coding	Yes
Marking	L ⊕ N
Potential marking	L ⊕ N
Mating force of a plug-in connection	approx. 20 ... 70 N (depending on pole number)
Retention force of a plug-in connection	Locked:
Unmating force of a plug-in connection	Unlocked: approx. 20 ... 70 N (depending on pole number)
Number of mating cycles	200, without resistive load
Protection type	IP2XC; When mated and secured with a strain relief housing: IP2xC (These compact connectors are not designed for use in open, easily accessible areas!)

Plug-in connection

Contact type (pluggable connector)	Female connector/socket
Connector (connection type)	for conductor
Mismating protection	Yes
Note on mismating protection	All WINSTA® components are 100% protected against mismating when: a.) plugging different numbers of poles b.) plugging while rotated 180 c.) plugging while laterally staggered d.) plugging one pole
Locking lever	Can be retrofitted
Locking of plug-in connection	Locking lever
Note on locking system	All connectors for mounted installations (snap-in versions for lighting fixtures or devices, all types of PCB and distribution connectors) are factory-equipped with locking levers to ensure plugs and sockets are securely locked. Additional locking levers are only required for flying leads (plug/socket).
Strain relief	Strain relief housing

Material data

Note (material data)	Information on material data can be found here
Color	black
Cover color	gray
Material group	I
Insulation material	Polyamide (PA66)
Flammability class per UL94	V0
Clamping spring material	Chrome-nickel spring steel (CrNi)
Contact material	Copper or copper alloy; surface-treated
Fire load	0.414 MJ
Strain relief color	black
Weight	20 g

Environmental requirements

Processing temperature	-5 ... +40 °C
Continuous operating temperature	-35 ... +85 °C
Note on continuous operating temperature	Insulating parts for temperatures ≤ 105 °C

Commercial data

Product Group	20 (WINSTA)
eCl@ss 10.0	27-44-06-05
eCl@ss 9.0	27-44-06-05
ETIM 8.0	EC002560
ETIM 7.0	EC002560
PU (SPU)	25 Stück
Packaging type	Box
Country of origin VKOrg Germany	DE
GTIN	4044918252096
Customs tariff number VKOrg Germany	85366990990

Approvals and certificates

Country specific Approvals



Approval	Standard	Certificate name
CCA DEKRA Certification B.V.	EN 61535	2173495.02
CCA DEKRA Certification B.V.	IEC 61535	NL-32105
VDE VDE Prüf- und Zertifizierungsinstitut	EN 61984	40002889
VDE VDE Prüf- und Zertifizierungsinstitut	EN 61535	40029808

Ship Approvals



Approval	Standard	Certificate name
ABS American Bureau of Shipping	-	19-HG1868589-PDA
DNV GL Det Norske Veritas, Germanischer Lloyd	-	TAE00001Z6
LR Lloyds Register	IEC 61984	02/20050 (E6)

UL-Approvals



Approval	Standard	Certificate name
cURus Underwriters Laboratories Inc.	UL 1977	E45171

Downloads

Environmental Product Compliance

Compliance Search

Environmental Product Compliance 770-103



Documentation

Bid Text

770-103	19.02.2019	xml 3.01 KB	
770-103	08.06.2015	doc 23.50 KB	
ausschreiben.de 770-103			

CAD/CAE-Data

CAD data	CAE data
2D/3D Models 770-103	EPLAN Data Portal 770-103
	WSCAD Universe 770-103
	ZUKEN Portal 770-103

1 Compatible products

1.1 System counterpart

1.1.1 Cable assembly



Item no.: 771-9993/206-101
pre-assembled connecting cable; Eca; Plug/open-ended; 3-pole; Cod. A; H05VV-F 3G 1.5 mm²; 1 m; 1,50 mm²; black

Item no.: 771-9993/006-101
pre-assembled interconnecting cable; Eca; Socket/plug; 3-pole; Cod. A; H05VV-F 3G 1.5 mm²; 1 m; 1,50 mm²; black

1.1.2 Distribution box



Item no.: 899-631/181-000
Distribution box; 230 V + DALI; 2 inputs; 6 outputs; Cod. A, I; MINI, MIDI; black



Item no.: 899-631/405-000
Distribution box; 230 V + SMI; 2 inputs; 6 outputs; Cod. A, B; MINI, MIDI; black



Item no.: 899-631/315-000
Distribution box; Cable and device protection; 1 input; 4 outputs; Cod. A; MIDI; black



Item no.: 899-631/305-000
Distribution box; Crossover switching; 1 input; 5 outputs; Cod. A, B, S; MIDI; black



Item no.: 899-631/309-000
Distribution box; Motion/presence detector; 1 input; 3 outputs; Cod. A, S; MIDI; black



Item no.: 899-631/180-000
Distribution box; Motion/presence detector; 1 input; 5 outputs; Cod. A; MIDI; black



Item no.: 899-632/102-000
Distribution box; Relay switching; 2 inputs; 1 output; Cod. A, B; MINI, MIDI



Item no.: 899-631/386-000
Distribution box; Series switching; 1 input; 7 outputs; Cod. A, S; MIDI; black

1.1.2 Distribution box



Item no.: 899-631/477-000
Distribution box; Single-phase current (230 V); 1 input; 11 outputs; Cod. A; MIDI



Item no.: 899-631/334-000
Distribution box; Single-phase current (230 V); 1 input; 13 outputs; Cod. A; MIDI; black



Item no.: 899-631/476-000
Distribution box; Single-phase current (230 V); 1 input; 4 outputs; Cod. A; MIDI



Item no.: 899-631/104-000
Distribution box; Single-phase current (230 V); 1 input; 7 outputs; Cod. A; MIDI; black



Item no.: 899-631/311-000
Distribution box; Single-phase current (230 V); 2 inputs; 6 outputs; Cod. A, P; MIDI; black



Item no.: 899-631/327-000
Distribution box; Single-phase current (230 V); 2 inputs; 6 outputs; Cod. A; MIDI; black



Item no.: 899-631/363-000
Distribution box; Single-pole switch circuit; 1 input; 5 outputs; Cod. A, S; MIDI; black



Item no.: 899-631/478-000
Distribution box; Single-pole switch circuit; 1 input; 7 outputs; Cod. A, S; MIDI



Item no.: 899-632/101-000
Distribution box; Surge switch circuit; 1 input; 4 outputs; Cod. A, S; MIDI; black



Item no.: 899-632/138-000
Distribution box; Surge switch circuit; 1 input; 4 outputs; Cod. A, S; MIDI; black



Item no.: 899-632/103-000
Distribution box; Surge switch circuit; 2 inputs; 2 outputs; Cod. A; MIDI



Item no.: 899-631/308-000
Distribution box; Two-way circuit; 1 input; 5 outputs; Cod. A, S; MIDI; black

1.1.3 Distribution connector



Item no.: 770-607
3-way distribution connector; 3-pole; Cod. A; 1 input; 3 outputs; black



Item no.: 770-608
5-way distribution connector; 3-pole; Cod. A; 1 input; 5 outputs; outputs on both sides; black



Item no.: 770-638
Distribution connector for switches; Single-pole and throttle two-way circuit; 3-pole; Cod. A/S; 1 input; 5 outputs; black



Item no.: 770-637
Distribution connector for switches; Single-pole switch and series circuit; 3-pole; Cod. A/S; 1 input; 5 outputs; black



Item no.: 770-633
h-distribution connector; 3-pole; Cod. A; 1 input; 2 outputs; 2 locking levers; black



Item no.: 770-635
h-distribution connector; 3-pole; Cod. A; 1 input; 2 outputs; outputs on both sides; 3 locking levers; for flying leads; black



Item no.: 770-634
h-distribution connector; 3-pole; Cod. A; 1 input; 2 outputs; outputs on one side; 2 locking levers; black



Item no.: 770-636
h-distribution connector; 3-pole; Cod. A; 1 input; 2 outputs; outputs on one side; 3 locking levers; for flying leads; black



Item no.: 770-606
T-distribution connector; 3-pole; Cod. A; 1 input; 2 outputs; 2 locking levers; black



Item no.: 770-615
T-distribution connector; 3-pole; Cod. A; 1 input; 2 outputs; 3 locking levers; for flying leads; black

1.1.4 Male connector/plug



Item no.: 770-813/011-000
Plug for PCBs; angled; 3-pole; Cod. A; black



Item no.: 770-813
Plug for PCBs; straight; 3-pole; Cod. A; black



Item no.: 770-213
Plug; 3-pole; 4,00 mm²; black



Item no.: 770-213/002-000
Plug; with direct ground contact; 3-pole; 4,00 mm²; black



Item no.: 770-113
Plug; with strain relief housing; 3-pole; 4,00 mm²; black



Item no.: 770-213/035-000
Plug; with strain relief housing; 3-pole; 4,00 mm²; black



Item no.: 770-713
Snap-in plug; 3-pole; Cod. A; 4,00 mm²; black



Item no.: 770-713/007-000
Snap-in plug; with direct ground contact; 3-pole; Cod. A; 4,00 mm²; black

1.2 Required accessories

1.2.1 Locking system

1.2.1.1 Locking system



Item no.: 770-101

Locking lever; for flying leads; for manual operation; black



Item no.: 770-121

Locking lever; for flying leads; for manual operation; white



Item no.: 770-111

Locking lever; for flying leads; for tool operation; black



Item no.: 770-131

Locking lever; for flying leads; for tool operation; white

1.3 Optional accessories

1.3.1 Cover

1.3.1.1 Cover



Item no.: 770-201

Lockout cap; 12-pole, separable; for sockets; Plastic; black



Item no.: 770-221

Lockout cap; 12-pole, separable; for sockets; Plastic; white

1.3.2 Marking

1.3.2.1 Marker



Item no.: 770-450/000-006

Marker card; Plastic; blue



Item no.: 770-450/000-001

Marker card; Plastic; green



Item no.: 770-450/000-012

Marker card; Plastic; orange



Item no.: 770-450/000-005

Marker card; Plastic; red



Item no.: 770-450

Marker card; Plastic; white



Item no.: 770-450/000-002

Marker card; Plastic; yellow

1.3.3 Tool

1.3.3.1 Operating tool



Item no.: 770-383

Operating tool; 3-way; green



Item no.: 210-719

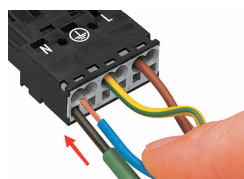
Operating tool; Blade: 2.5 x 0.4 mm; with a partially insulated shaft

Installation notes

Conductor termination



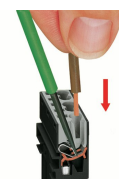
1. Strip length, outer insulation = 35 mm (2-pole), 55 mm (3- to 5-pole)
2. Strip length = 9 mm
3. Extended ground conductor = 8 mm



To terminate fine-stranded conductors, open the clamping unit via screwdriver (2.5 mm blade width) and insert a stripped conductor until it hits the backstop.

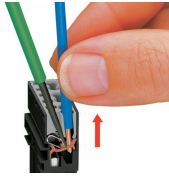


Insert the stripped solid conductor until it hits the backstop.



To terminate fine-stranded conductors, open the clamping unit via screwdriver (2.5 mm blade width) and insert a stripped conductor until it hits the backstop.

Conductor removal



To remove the conductor, actuate the clamp via screwdriver (2.5 mm blade width) and pull out the conductor.

Coding

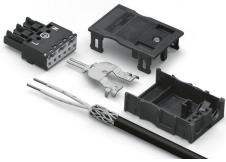


Simply cut off the coding pin from the socket.

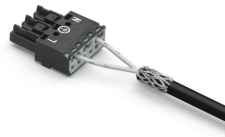


Insert coding pin into plug (break first) until it engages.

Shield termination



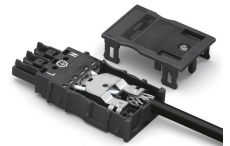
Connector with shield termination



Apply the shield to the sheathed cable.
Strip length, outer insulation = 55 mm
Shield length = 10 mm



Push the shield connecting plate into the connector until fully inserted.



First insert the wired connector into a strain relief housing, then snap cover and tighten screw.