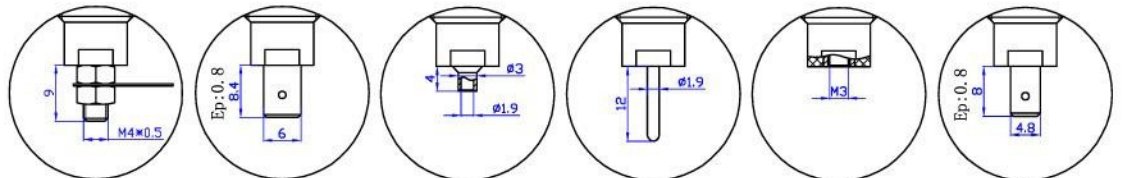
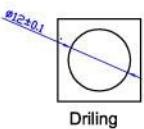
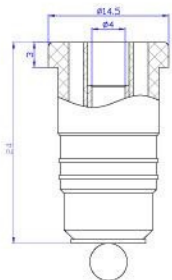


24.301.* 24.302.* 24.303.* 24.304.* 24.305.* 24.306.*

24.311.* 24.312.* 24.313.* 24.314.* 24.315.* 24.316.*

Model.		Material	Rated voltage/current
24.301.*	24.311.*	Insulator:PA Body:Brass Surface:Nickel plated	CATIII 1000V/Max.32A
24.302.*	24.312.*		
24.303.*	24.313.*		CATIII 1000V/Max.24A
24.304.*	24.314.*		CATIII 1000V/Max.32A
24.305.*	24.315.*		
24.306.*	24.316.*		



24.321.* 24.322.* 24.323.* 24.324.* 24.325.* 24.326.*

Model.	Material	Rated voltage/current
24.321.*	Insulator:PA Body:Brass Surface:Nickel plated	CATIII 1000V/Max.32A
24.322.*		
24.323.*		CATIII 1000V/Max.24A
24.324.*		CATIII 1000V/Max.32A
24.325.*		
24.326.*		

