

PCB LAYOUT(RECOMMENDED)
(TOP VIEW TOL. :±0.05)

SPECIFICATION

MATERIAL

Housing:PBT+5%PC UL94V-0

Contacts:Brass

ELECTRICAL

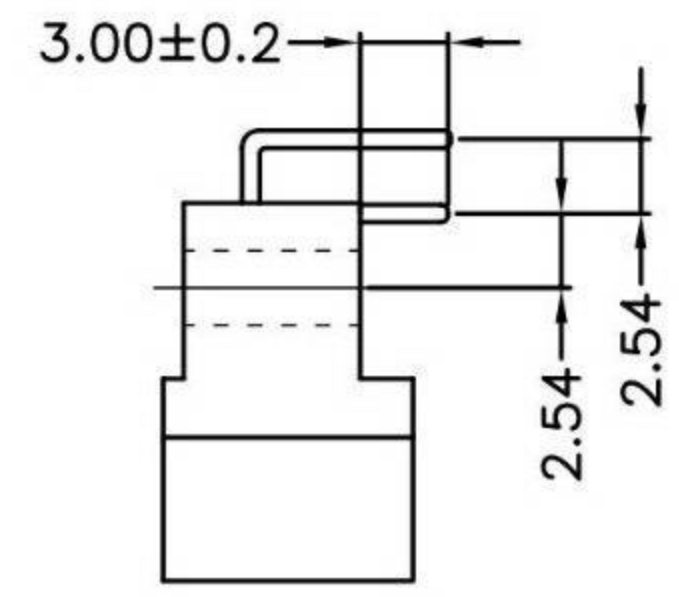
Current rating: 2 Amps .

Contact resistance: 20 mohms initial

Insulation resistance: 100000 Mohms min @ 500 VDC

Dielectric withstanding voltage: 1000 VAC / minute

Operating temperature: -55° C TO +125° C



RoHS
Compliant

HSM 玄茂科技股份有限公司
HSUAN MAO TECHNOLOGY CO., LTD.

APPD. 核准 BETTY

DWG. 製圖 KAREN

DATE 制表日 2012/08/15

SCALE 比例 參考

UNIT 單位 MM

PAGE 張數 1 OF 1

TOLERANCE

X.	±0.25	X*	±5°
.X	±0.20	.X*	±2°
.XX	±0.15	.XX*	±1°
.XXX	±0.02	.XXX*	±0.5°

SIZE 紙張尺寸 A4

REV. 版本 A

PART NAME 品名
DIN41612 2.54mm DIP TYPE 90° DUAL ROW
BODY 32P SIZE-A+B 32P MALE DIP L=2.9mm
SELECTIVE GOLD PLATING ROHS

PART NO. 料號 C4162-32MCBRS0R