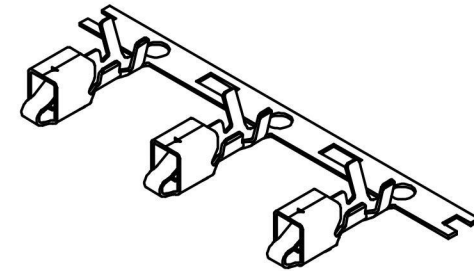
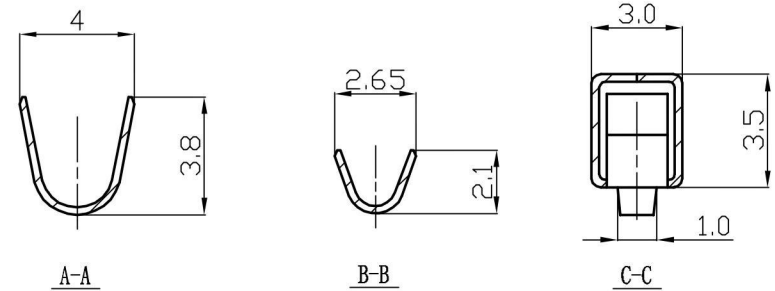
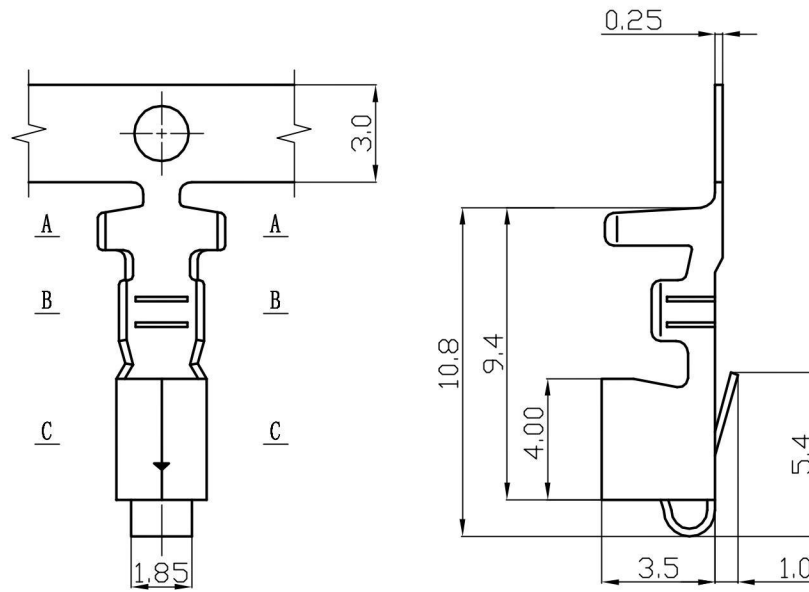

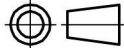


REV	DESCRIPTION	DATE
A/0	原始版本	E
A/1	修订版本	



Main Specifications

线数 (poles): 2 to 16P
 额定电流 (Current rating): 10A AC, DC
 额定电压 (Voltage rating): 250V AC, DC
 温度范围 (Temperature range): -25°C to +85°C
 接触电阻 (Contact resistance): $\leq 10\text{m}\Omega$
 绝缘电阻 (Insulation resistance): $\geq 1000\text{M}\Omega$
 耐电压 (Withstand voltage): 1500V AC/minute
 适用线规 (Applicable wire): AWG #26 to #18
 适用基板厚度 (Applicable PC board thickness): 1.6mm

1	SN3963-TP2	Phos Bronze tin 磷青铜镀锡	T11	3000PCS/Roll (1盘)					
序号	料号	材料		附注					
X.° ±3° X.X° ±0.5°									
>0-3	>3-18	>18-50	>50-120	单位	比例	Design Units	SIZE	页码	
±0.12	±0.15	±0.3	±0.5	MM Only	—	METRIC	A4		
制作	审核	批准	材料	图号			Part No		
		见图解		品名					