

THRU-HOLE (THM) & SURFACE MOUNT (SMT) COIN CELL HOLDERS

12mm to 16mm COIN CELL HOLDERS

DESIGN ADVANTAGES...

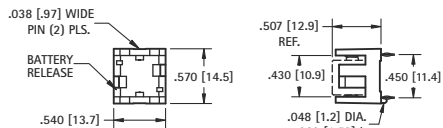
- Reliable spring tension assures low contact resistance
- Retains battery securely to withstand shock and vibration
- Base material UL Rated 94V-0. Impervious to most industrial solvents
- Operating temperature range: -60°F to +293°F (-50°C to +145°C)

IDEALLY SUITED FOR...

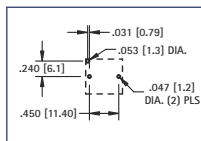
- Computer memory, power transfer and back-up systems
- Video and telecommunications power back-up
- Microprocessors and Microcomputer memory hold (desktop and laptop applications)
- Industrial and commercial security and alarm systems
- PC/104 application



THRU HOLE MOUNT

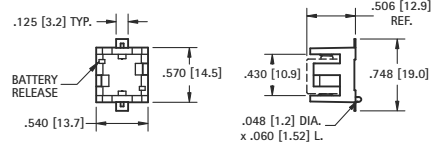


Mounting Detail



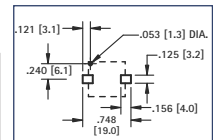
1/3N

AVAILABLE ON TAPE AND REEL



SURFACE MOUNT

Pad Layout



MATERIAL:

Base: High Temperature Nylon 46, UL Rated 94V-0
Contacts: .012 (.30) Phosphor Bronze, Tin Plate

CAT. NO.	CELLS	BATTERY REFERENCE
503	1	DL1/3N, K58L, CR1/3N
	2	SR44, 357, MS76, G-13, 303, V313, PX76A

MATERIAL:

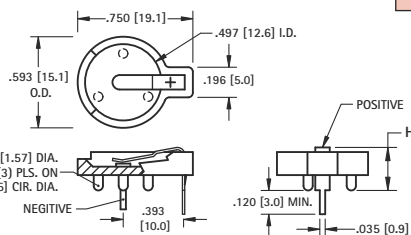
Base: High Temperature Nylon 46, UL Rated 94V-0
Contacts: .012 (.30) Phosphor Bronze, Gold Plate (Flash)

CAT. NO. BULK	ON TAPE & REEL	CELLS	BATTERY REFERENCE
498	498TR	1	DL1/3N, K58L, CR1/3N
		2	SR44, 357, MS76, G-13, 303, V313, PX76A

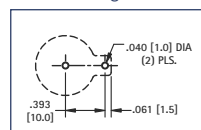
Tape & Reel Specs: 44mm wide; 20mm pitch; 13 inch reel (200 pieces per reel)



THRU HOLE MOUNT

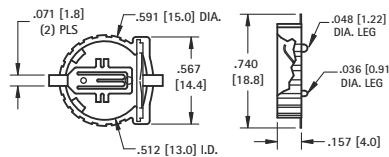


Mounting Detail



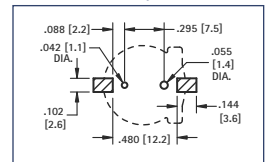
12mm

AVAILABLE ON TAPE AND REEL



SURFACE MOUNT

Pad Layout



MATERIAL:

Base: PBT, UL Rated 94V-0
Positive Contact: .015 (.38) Spring Steel, Tin-Nickel Plate
Negative Contact: .035 (.89) Dia. Steel, Tin-Nickel Plate

CAT. NO.	HEIGHT (H)	CELLS	BATTERY REFERENCE
500	.280 (7.1)	1	BR1212, CR1216, CL1220, CR1225
501	.380 (9.7)	2	BR1212, CR1216, CL1220, CR1225

MATERIAL:

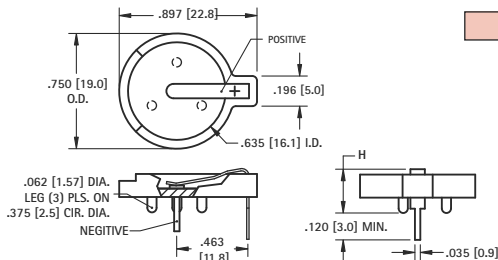
Base: Glass Filled PPS, UL Rated 94V-0
Contacts: .008 (.20) Phosphor Bronze, Gold Plate (Flash)

CAT. NO. BULK	ON TAPE & REEL	CELLS	BATTERY REFERENCE
1056	1056TR	1	CR1220, BR1220

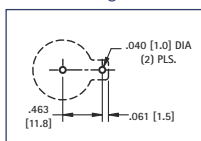
Tape & Reel Specs: 32mm wide; 20mm pitch; 13 inch reel (500 per reel)



THRU HOLE MOUNT

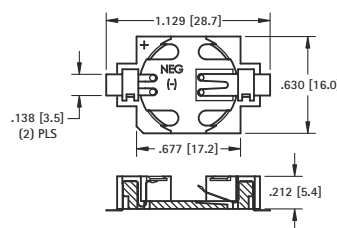


Mounting Detail

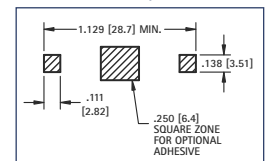


16mm

AVAILABLE ON TAPE AND REEL



Pad Layout



MATERIAL:

Base: Glass Filled LCP, UL Rated 94V-0
Positive Contact: .015 (.38) Spring Steel, Tin-Nickel Plate
Negative Contact: .035 (.89) Dia. Steel, Tin-Nickel Plate

CAT. NO.	HEIGHT (H)	CELLS	BATTERY REFERENCE
502	.285 (7.3)	1	CR1612, CL1616, CL1620
		2	CR1612
502-3	.330 (8.4)	1	BR1625, CR1632
		2	BR1616, CR1620, CL1620

MATERIAL:

Base: Glass Filled LCP, UL Rated 94V-0
Contacts: .006 (.15) Phosphor Bronze, Gold Plate (Flash)

CAT. NO. BULK	ON TAPE & REEL	CELLS	BATTERY REFERENCE
504	504TR	1	BR1625, CR1632

Tape & Reel Specs: 44mm wide; 24mm pitch; 13 inch reel (450 per reel)

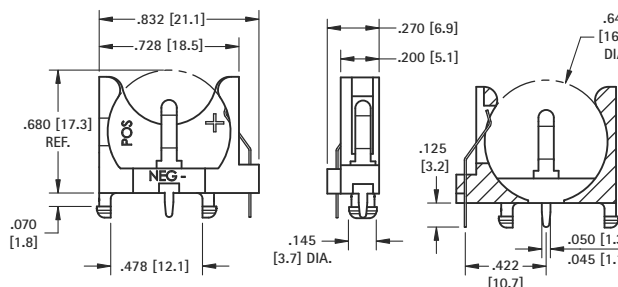
16mm VERTICAL



MATERIAL:

Base: PBT, UL Rated 94V-0
Contacts: .010 (.25) Steel, Tin-Nickel Plate
Battery Reference: (1) cell: BR1612, CR1616, CL1620, CR1625, BR1632

CAT. NO. 1069



Pad Layout

