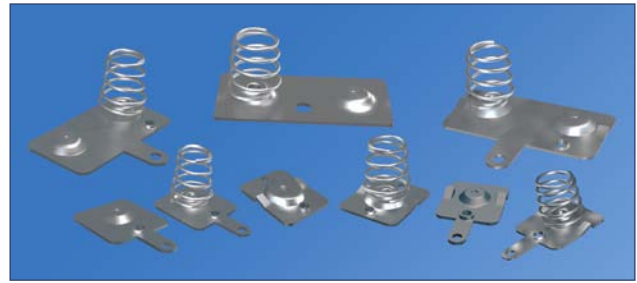


SPRING & BUTTON CONTACTS

- Economical and reliable contacts are ideal for molded cases with self contained battery compartments
- "Solder tab" design for either wire lead or PC mounting
- Unique spring contacts adjust to variations in battery lengths
- Reliable spring contacts assure low contact resistance and a dependable connection
- Space saving, economical, excellent mechanical construction



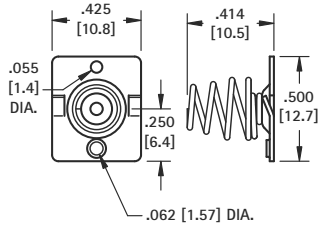
MATERIAL:

Plate: .020 (.51) Steel, Nickel Plate **Spring:** Spring Steel, Nickel Plate

Refer to page 35 for Battery Contact Layout & Mounting Details

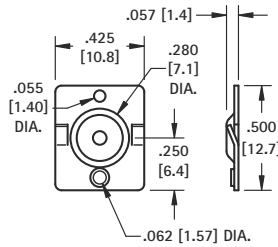
"AA" • "CR2" • "A"

(-) NEGATIVE SPRING



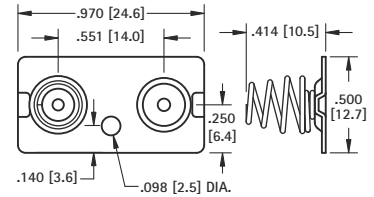
CAT. NO. 5222

(+) POSITIVE BUTTON



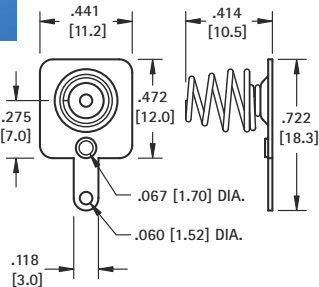
CAT. NO. 5221

DUAL CONTACT ("AA" ONLY)



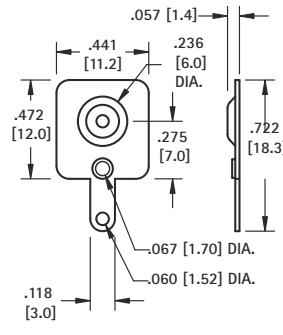
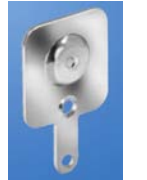
CAT. NO. 5212 Left or Right

(-) NEGATIVE SPRING WITH TAB



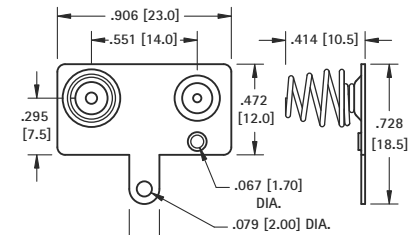
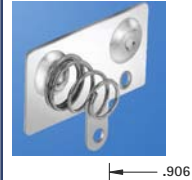
CAT. NO. 5201

(+) POSITIVE BUTTON WITH TAB



CAT. NO. 5223

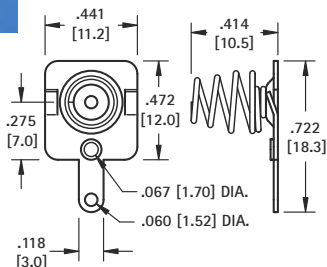
DUAL CONTACT ("AA" ONLY)



CAT. NO. 5210 Left

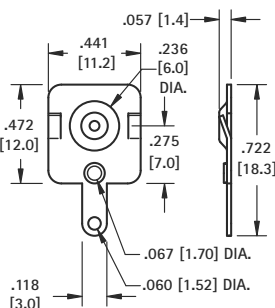
CAT. NO. 5211 Right (Shown)

(-) NEGATIVE SPRING WITH TAB/LANCE



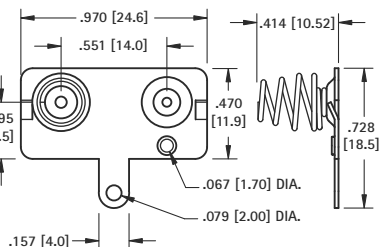
CAT. NO. 5220

(+) POSITIVE BUTTON WITH TAB/LANCE



CAT. NO. 5219

DUAL CONTACT WITH TAB ("AA" ONLY)



CAT. NO. 5218 Left

CAT. NO. 5217 Right (Shown)