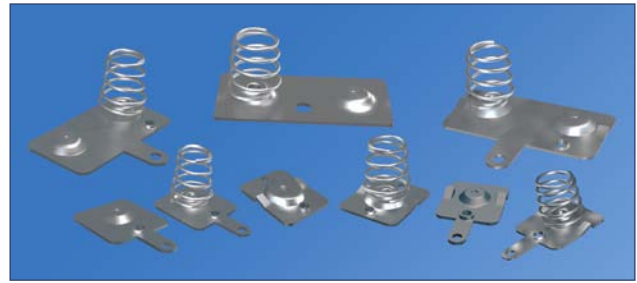


# SPRING & BUTTON CONTACTS

- Economical and reliable contacts are ideal for molded cases with self contained battery compartments
- "Solder tab" design for either wire lead or PC mounting
- Unique spring contacts adjust to variations in battery lengths
- Reliable spring contacts assure low contact resistance and a dependable connection
- Space saving, economical, excellent mechanical construction



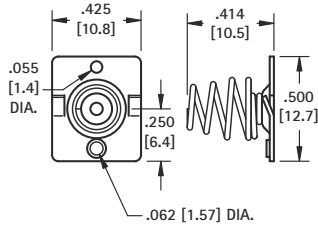
**MATERIAL:**

**Plate:** .020 (.51) Steel, Nickel Plate **Spring:** Spring Steel, Nickel Plate

Refer to page 35 for Battery Contact Layout & Mounting Details

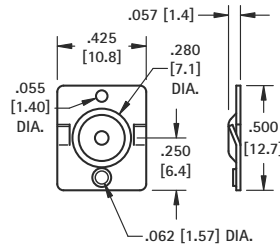
"AA" • "CR2" • "A"

(-) NEGATIVE SPRING



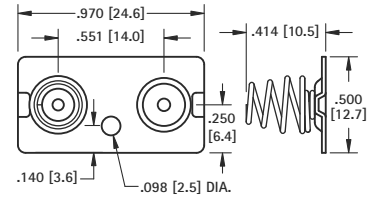
**CAT. NO. 5222**

(+) POSITIVE BUTTON



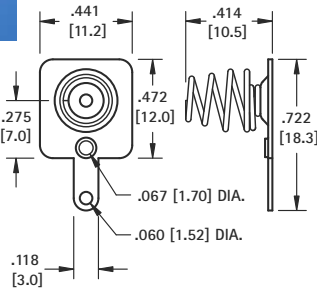
**CAT. NO. 5221**

DUAL CONTACT ("AA" ONLY)



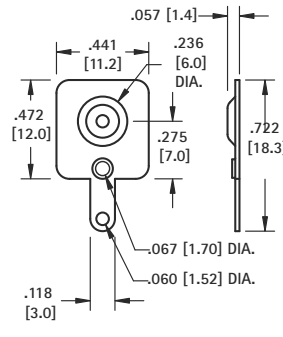
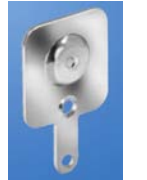
**CAT. NO. 5212** Left or Right

(-) NEGATIVE SPRING WITH TAB



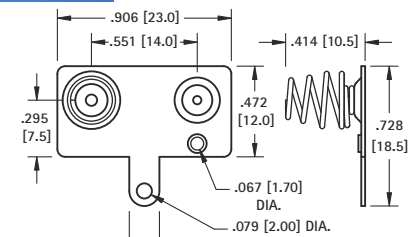
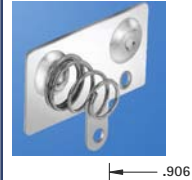
**CAT. NO. 5201**

(+) POSITIVE BUTTON WITH TAB



**CAT. NO. 5223**

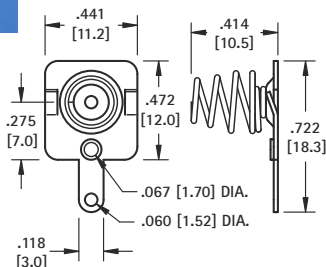
DUAL CONTACT ("AA" ONLY)



**CAT. NO. 5210** Left

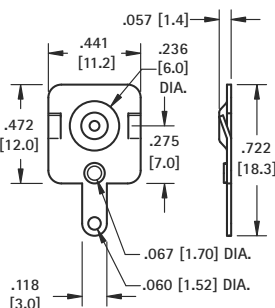
**CAT. NO. 5211** Right (Shown)

(-) NEGATIVE SPRING WITH TAB/LANCE



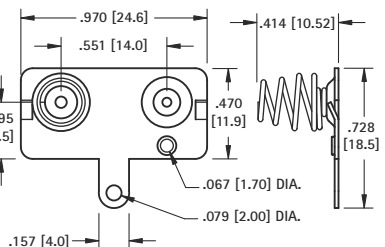
**CAT. NO. 5220**

(+) POSITIVE BUTTON WITH TAB/LANCE



**CAT. NO. 5219**

DUAL CONTACT WITH TAB ("AA" ONLY)



**CAT. NO. 5218** Left

**CAT. NO. 5217** Right (Shown)