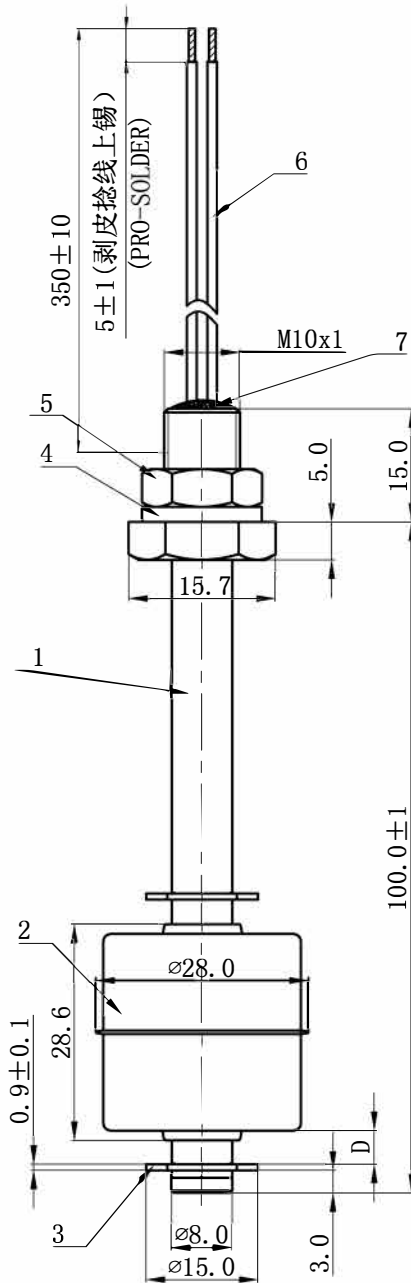
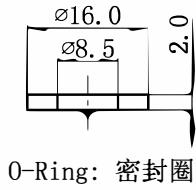
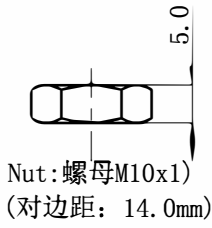


Unit:mm
Tolerance: ±0.3



Description of Action:

When the floater drops from the top to the D position, the switch turns on. $2\text{mm} \leq D \leq 5\text{mm}$. Flip the ball, the action point is reversed.

Note: The installation position of the sensor must be far away from the interference objects that generate magnetic fields, such as motors, electromagnetic coils, etc., to avoid causing malfunction.

Material specification 材质规格		Electrical characteristics 电气特性		Operating characteristics 使用特性	
1. Float body: SUS304 本体:		1. Contact Form: A 触点方式		1. Max. Shock: 30G Max. 耐冲击性	
2. Float ball: SUS304 浮球		2. Max. Contact Rating: 10W 最大接点容量		2. Max. Vibration: 10~55Hz Amplitude:1.52mm 2H. 耐振动性	
3. E-Ring: SUS304 卡环		3. Max. Switching Voltage: DC200V/AC150V 最大开关电压		3. Operating Temperature: -20~+100°C 使用温度	
4. O-Ring: SIL 密封圈 硅橡胶红色		4. Min. Breakdown Voltage: DC250V 最小崩溃电压		4. Humidity : 95%RH 湿度	
5. Nut: SUS304 螺母		5. Max. Switching Current: 0.5A 最大开关电流		5. Application: Water 应用 水	
6. Wire: UL3122 AWG22 White 线材: UL3122 AWG22 白色编织		6. Max. Contact Resistance: 500mΩ 最大接触电阻			
7. Epoxy Resin Black Epoxy 充填树脂 黑色环氧树脂		7. Min. Insulation Resistance: 10 ⁹ Ω 最小绝缘电阻			
		DRAWN: 吴恒武		DATE: 2020.01.13	PART NAME: Level Sensor
		CHECKED: /		DATE: /	PART NO. LS-S10001-101
		APPR'D: 吴恒武		DATE: 2020.01.13	DWG. NO.
AO 20.01.13	Original release	Wuhw	Wuhw		
Rev.	Date	Revision History		Issue by	Approved
ANGLE OF VIEW					
UNIT: mm					
SCALE: 1:1					
SHEET: 10F1					
DWG. SIZE: A4					