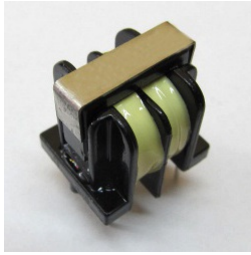


# DUS-10,5 COMMON MODE CHOKES

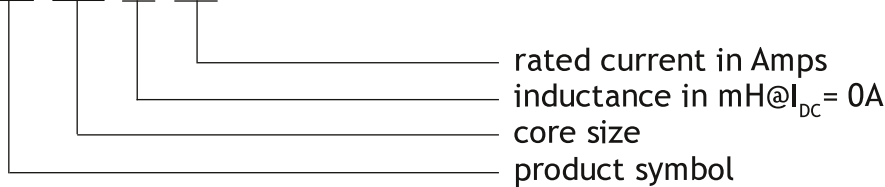


## APPLICATIONS:

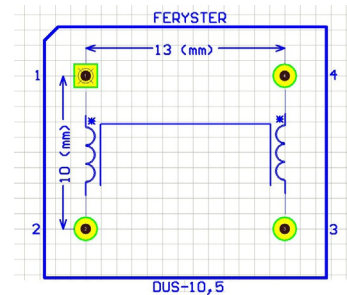
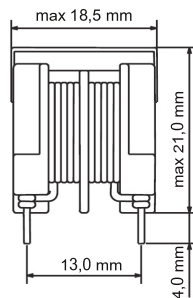
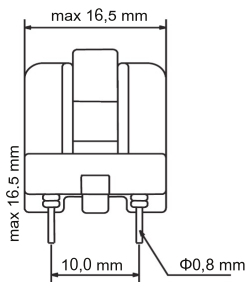
- Suppression of common mode noise
- Line filters
- SMPS
- Electronic ballasts
- Complies with EN 61558-1:2005 and PN-EN 60938-1
- Insulation test voltage: 2100 VAC
- Rated voltage: 250 VAC +10%
- Inductance tolerance: -30%/+50%
- Lower/Upper category temperature: -25°C/+100°C

## ORDERING CODE:

DUS-10,5/47/0,5



## DIMENSIONS:



Footprint - Top view

## ELECTRICAL PROPERTIES:

Part number	Marking	$L_{nom}$ [mH]	$I_{max}$ [A]	$RDC_{max}$ [ $\Omega$ ]
DUS-10,5/47/0,5	473.A50 FERYSTER	2X47	0,5	1,450
DUS-10,5/33/0,6	333.A60 FERYSTER	2X33	0,6	1,100
DUS-10,5/22/1,0	223.1A0 FERYSTER	2X22	1,0	0,570
DUS-10,5/15/1,2	153.1A2 FERYSTER	2X15	1,2	0,340
DUS-10,5/10/1,2	103.1A2 FERYSTER	2X10	1,2	0,240
DUS-10,5/6,8/1,9	682.1A9 FERYSTER	2X6,8	1,9	0,125
DUS-10,5/4,7/1,9	472.1A9 FERYSTER	2X4,7	1,9	0,115
DUS-10,5/3,3/1,9	332.1A9 FERYSTER	2X3,3	1,9	0,095
DUS-10,5/2,2/1,9	222.1A9 FERYSTER	2X2,2	1,9	0,080
DUS-10,5/1,5/1,9	152.1A9 FERYSTER	2X1,5	1,9	0,070
DUS-10,5/1,0/3,5	102.3A5 FERYSTER	2X1,0	3,5	0,030
DUS-10,5/0,68/4,4	681.4A4 FERYSTER	2X0,68	4,4	0,018
DUS-10,5/0,47/5,0	471.5A0 FERYSTER	2X0,47	5,0	0,016
DUS-10,5/0,33/5,0	331.5A0 FERYSTER	2X0,33	5,0	0,012

## CHARACTERISTICS:

