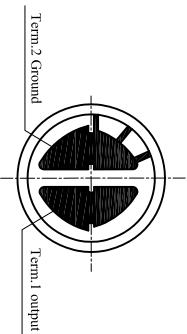
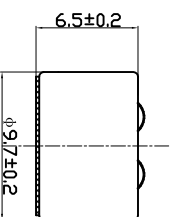
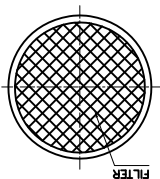
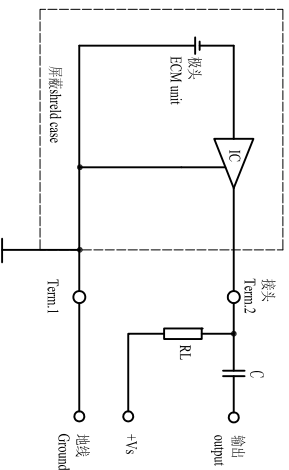


受控



原理图



编号 NO.	项目 Items	规格 Specifications
1	额定电压 Rated Voltage	4.5V
2	工作电压 Operating Voltage	1.5V~10V
3	灵敏度 Sensitivity	-41±3dB(0dB=1V/pa at 1KHz)
4	消耗电流 Current Consumption	0.5mA Max
5	频率范围 Frequency	100Hz~16000Hz
6	信噪比 S/N Ratio	≥60dB
7	灵敏度减低 Sensitivity Reduction	-3dB (V _{cc} =4.5V to 3.0V)
8	方向性 Directivity	Omnidirectional
9	测试条件 Testing Condition	1000Hz, V _s =4.5V, R _L =2.2K Ω
10	壳体材料/颜色 Shell Material/Color	Al/Silver
11	工作温度 Operating Temperature	-25~+55 °C
12	贮存温度 Store Temperature	-25~+55 °C
13	重量 Weight	≤1.6g

备注:
本产品符合RoHS指令
Compliance with RoHS

TOLERANCES UNLESS
NOTED OTHERWISE

X ±
.XX ±
XXX ±
90° FORMED +2°
ANGLES -1°

FIRST ANGLE PROJECTION 	DRAWN	KEPO MODEL NO.	CUSTOMER
	DESIGN	水成峰	
	CHECKED	KPCM-G15E	CUSTOMER NO.
	APPROVED	DWG NO.	
	DATE	13.01.04	
	CONTRACT NO.	KP3,841,408R	
	AGENCY APPROVAL		

KEPO CO., LTD.

TEL: (+86)574-88370330 FAX: (+86)574-88370329

NO.	DATE	REVISION	REFERENCE DWG
△	1		
△			
△			