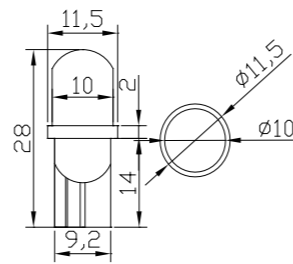


OST10WG01GD-XXXXXXXXXX

Round



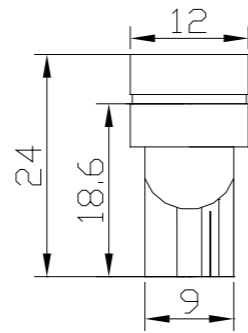
T10 Round	Part Number
white	W5YKTA31B
yellow	Y5RUTA31B
red	R5RUTA31B
green	G5DUTA31B
blue	B5YUTA31B



T10 3-Chips SMD LED



W473S4C1A



Automotive LED T10 Series

- ◆ Width-indicator Lamp
- ◆ Signal Light



Applications:



Absolute Maximum Ratings (Ta=25°C)

Items	Symbol	Values	Units
Operating Supply Range (DC)	V _{idc}	16	V
Input Current (DC)	I _i	30	mA
Power Dissipation	P _a	0.48	W
Operating Temperature	T _{ope}	-10 ~ +40	DegC
Storage Temperature	T _{sto}	-20 ~ +80	DegC

Typical Performance (Ta=25°C)

Items	Symbol	Min	Typ	Max	Units
LED Module Power	P _m	-	0.24	0.48	W
Input Voltage (DC)	V _i	-	12	16	V
Product Input Current	I _f	-	20	30	mA
Beam Pattern	BP	-	-	-	Deg
Total Diameter of PCB	L _{mod.}	-	28	-	mm
Net Weight	W _{ei.}	---	1.6	---	g