

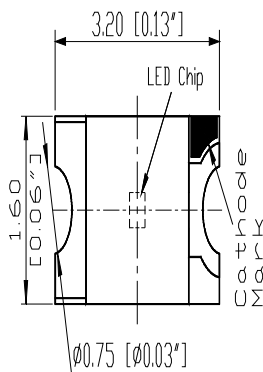
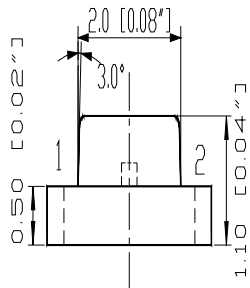
# SURFACE MOUNT LED LAMPS

## 表面黏著型發光二極體指示燈

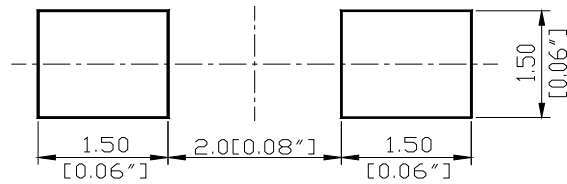
### S150 Series SMD Chip LED Lamps

Part Number: HT-150Y (150Y)

### Package outlines



### RECOMMEND PAD LAYOUT





**ATTENTION**  
OBSERVE PRECAUTIONS  
FOR HANDLING  
ELECTROSTATIC  
SENSITIVE DEVICES

ITEM	MATERIALS
Resin (mold)	Epoxy
Bonding Wire	Ø 25 µm Au
Lens color	Water transparent
Printed circuit board	BT (white)
Dice	AlInGaP
Emitted color	Yellow

#### NOTES:

1. All dimensions are in millimeters (inches);
2. Tolerances are ±0.1mm (0.004inch) unless otherwise noted.

# SURFACE MOUNT LED LAMPS

## 表面黏著型發光二極體指示燈

Part Number: Q150Y4

### Absolute maximum ratings $(T_A=25^{\circ}\text{C})$

Parameter	Symbol	Value	Unit
Forward current	I <sub>f</sub>	30	mA
Reverse voltage	V <sub>r</sub>	5	V
Power dissipation	P <sub>d</sub>	75	mW
Operating temperature range	T <sub>op</sub>	-20 ~+80	°C
Storage temperature range	T <sub>stg</sub>	-20 ~+80	°C
Peak pulsing current (1/8 duty f=1kHz)	I <sub>fp</sub>	125	mA

### Electro-optical characteristics $(T_A=25^{\circ}\text{C})$

Parameter	Test Condition	Symbol	Value			Unit
			Min	Typ	Max	
Wavelength at peak emission	I <sub>f</sub> =20mA	$\lambda_{\text{peak}}$	582	590	596	nm
Spectral half bandwidth	I <sub>f</sub> =20mA	$\Delta\lambda$	--	21	--	nm
Dominant wavelength	I <sub>f</sub> =20mA	$\lambda_{\text{dom}}$	--	590	--	nm
Forward voltage	I <sub>f</sub> =20mA	V <sub>f</sub>	--	2.0	2.5	V
Luminous intensity * 1	I <sub>f</sub> =20mA	I <sub>v</sub>	55	--	--	mcd
Viewing angle at 50% I <sub>v</sub>	I <sub>f</sub> =10mA	2 $\theta$ 1/2	--	140	--	Deg
Reverse current	V <sub>r</sub> =5V	I <sub>r</sub>	--	--	10	$\mu\text{A}$

\* 1 Note: Luminous intensity tolerance is  $\pm 10\%$ .