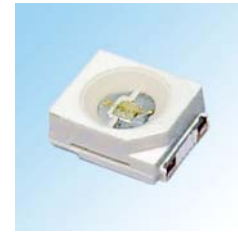




ATTENTION
OBSERVE PRECAUTIONS
FOR HANDLING
ELECTROSTATIC
DISCHARGE
SENSITIVE
DEVICES

HL-AC-3528D7GC-2P
GREEN


Features

- SINGLE COLOR.
- White package
- Suitable for all SMT assembly and solder process
- Available on tape and reel
- Package:2000pcs/reel

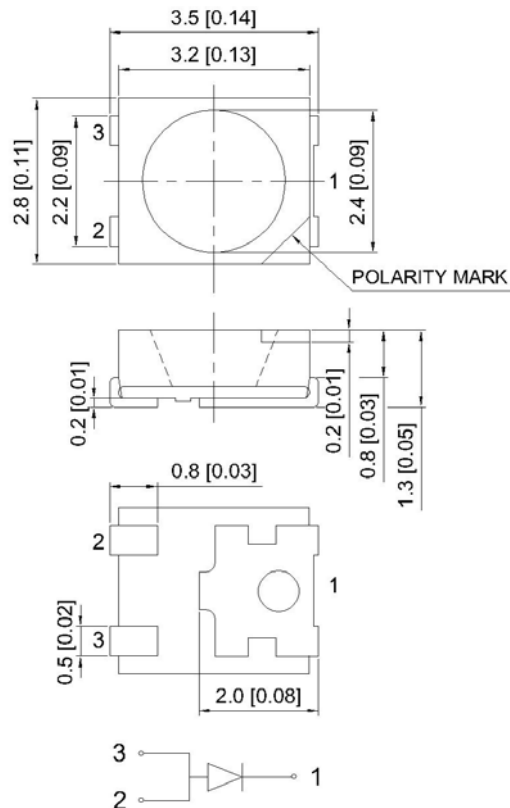
Description

The Green source color devices are made with GaP on SiC Light Emitting Diode.

Applications

- Optical indicator
- Indicator and backlighting in telephone and fax
- Flat backlight for LCD,switch and Symbol
- Light pipe application
- General use

Package Dimensions



Notes:

1. All dimension units are millimeters.
2. All dimension tolerance is $\pm 0.2\text{mm}$ unless otherwise noted.
3. An epoxy meniscus may extend about 1.5mm down the leads.

Selection Guide

Part No.	Dice	Lens Type	Φv (lm) @ 150mA		Viewing Angle
			Min.	Typ.	2θ1/2
HL-AC-3528D7GC-2P	GREEN (GaP)	WATER CLEAR	—	20	120°

Note:

1. θ1/2 is the angle from optical centerline where the luminous intensity is 1/2 the optical centerline value.
2. the above luminous intensity measurement allowance tolerance ±10%.

Electrical / Optical Characteristics at TA=25°C

Symbol	Parameter	Device	Min.	Typ.	Units	Test Conditions
λD	Dominant Wavelength	Green	520	525	nm	IF=150mA
C	Capacitance	Green		45	pF	VF=0V;f=1MHz
VF	Forward Voltage	Green	3.0	3.2	V	IF=150mA
IR	Reverse Current	Green		5	uA	VR= 5V

Absolute Maximum Ratings at TA=25°C

Parameter	Green	Units
Power dissipation	500	mW
DC Forward Current	150	mA
Peak Forward Current [1]	200	mA
Reverse Voltage	5	V
Operating / Storage Temperature	-40°C To +85°C	

Note:

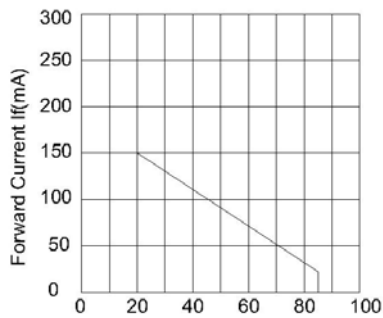
1. 1/10 Duty Cycle, 0.1ms Pulse Width.

GREEN HL-AC-3528D7GC-2P
Reliability Test Items And Conditions

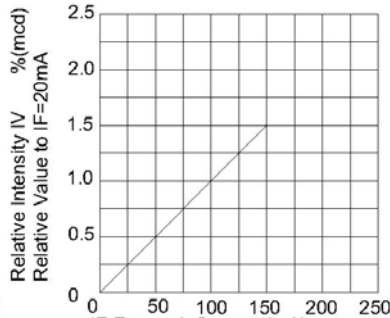
The reliability of products shall be satisfied with items listed below.
 Confidence level :90% LTPD :10%

No.	Items	Test Condition	Test Hours/Cycles	Sample Size	Ac/Rc
1	Reflow	Temp:260°C max T=5 sec max.	1times.	22Pcs.	0/1
2	Temperature Cycle	100°C±5°C 30 min. ↑↓5 min -40°C±5°C 30 min.	100 Cycles	22Pcs.	0/1
3	Thermal Shock	100°C±5°C 5 min. ↑↓ -40°C±5°C 5 min.	100 Cycles	22Pcs.	0/1
4	High Temperature Storage	Temp.:100°C±5°C	1000Hrs.	22Pcs.	0/1
5	Low Temperature Storage	Temp.: -40°C±5°C	1000Hrs.	22Pcs.	0/1
6	DC Operating Life	Ta=25°C±5°C IF=150mA	1000Hrs.	22Pcs.	0/1
7	High Temperature/High Humidity	85°C±5°C/ 85%RH IF=50mA	1000Hrs.	22Pcs.	0/1

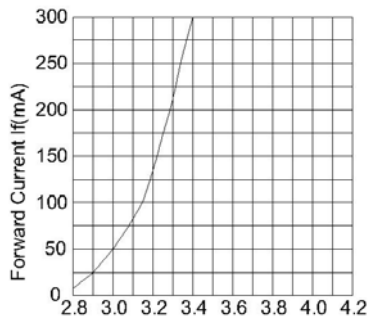
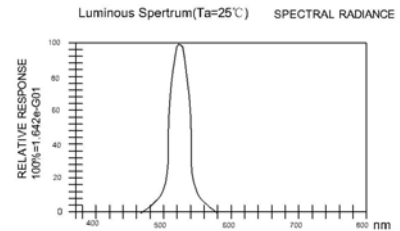
*The technical information shown in the data sheets are limited to the typical characteristics and circuit examples of the referenced products. It does not constitute the warranting of industrial property nor the granting of any license.



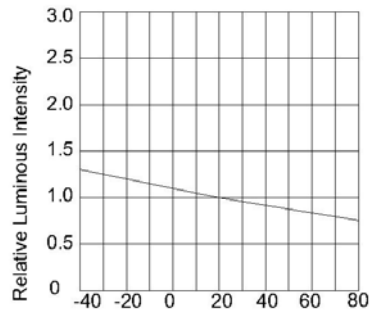
Ambient Temperature TA(°C)
 Forward current
 Derating Curve



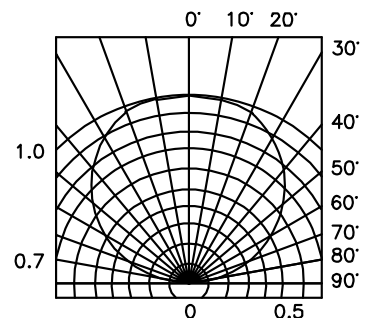
Luminous Intensity vs.
 Forward Current



Forward Voltage (V)
 Forward Current VS.
 Forward Voltage

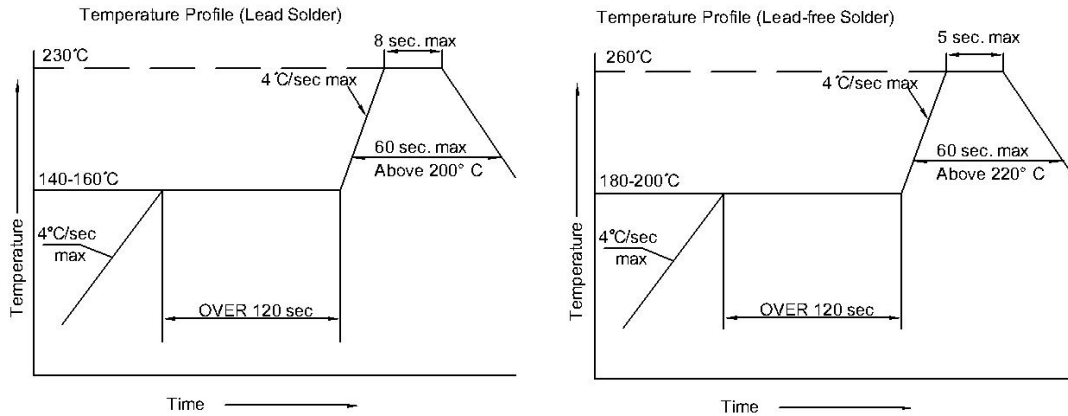
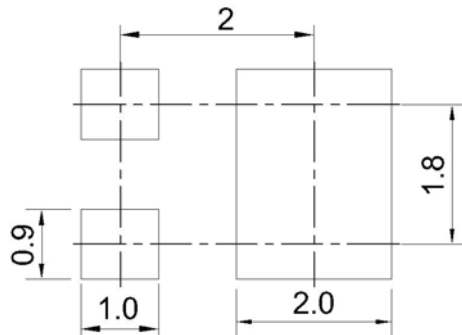


Ambient Temperature Ta(°C)
 Luminous Intensity
 Ambient Temperature



HL-AC-3528D7GC-2P
SMT Reflow Soldering Instructions

Number of reflow process shall be less than 2 times and cooling process to normal temperature is required between first and second soldering process.


Recommended Soldering Pattern
 (Units : mm)

Tape Specifications
 (Units : mm)
