

GQ12

Metal Push Button



Part-number Description

GQ12	★	□	◇	◆	△	▲	◎
Code of series	Code of series B Domed S Square	Contact structure 10 1NO No letter means signal lamp	Lamp type D Dot	Connet type J Pin terminal No letter means screw terminal	Lamp color and colored button R Red G Green Y Yellow O Orange B Blue W White N Black	Lamp voltage AC/DC 6V AC/DC 12V AC/DC 24V AC/DC 36V Note: Other voltage can be made to order	Crust material N Nickel-plated Brass S Stainless steel A Zn-Al alloy (black) T Zn-Al (silvery white) Cr Chrome-plated (made to order)

Note: Pls read the catalogue carefully, and choose the right part-number according to the sig

Specifications

Operating Temperature	-25°C~+55°C (no freezing) keep the air flowing around illuminated pushbutton
Operating Humidity	45~85%RH (no condensation)
Contact Resistance	≤50mΩ
Insulation Resistance	≥1000MΩ
Dielectric Strength	1500V, A C50Hz, 5 seconds
Vibration Resistance	50Hz, Amplitude 1.2mm
Shock Resistance	> 10g
Solder Heat Resistance	320°C (or 30W soldering iron) no more than 2 seconds

Standard and Certification

Standard	Certification Mark	Certificate Authority / Certification Number
EN61058-1:2002+A2:2008	CE	VOV/VT11018807
EN60947-1:2004		CTS/CTS070706-01006-E

Switching Operation

Type	X
Sign	
Diagram	
Note: Using two terminals, double-break and slow-motion contact.	

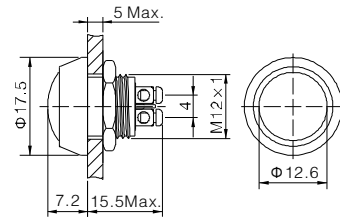
Lamp Ratings

Lamp Type	LED lamp (AC/DC)
Led Color	R G Y O B W
Life	40000 hours (Reference)
Rated Voltage	AC/DC6V, AC/DC12V, AC/DC24V, AC/DC36V
Rated Current	About 15mA
DroppingWay	Inner resistance (except for some products)
Lamp Circuit Diagram	Using AC/DCLLED lamp, the terminals have no difference of anode and cathode: Using inner resistance, do not need connect outer resistance GQ12 and GQ16 have no inner resistance, need connect outer resistance.
Note: DCLLED and other voltage can be made to order.	



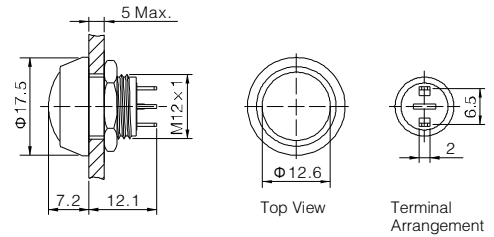
GQ12B-10/S

- ⊙ Φ 12mm Diameter
- ⊙ Switch Rating: 2A/36VDC
- ⊙ Contact Configuration: 1NO
- ⊙ Operation Type: Momentary
- ⊙ The Crust material:Stainless steel
- ⊙ IP Degree: IP65(IP67 can be made to order) ,IK08



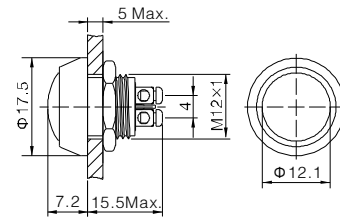
GQ12B-10/J/S

- ⊙ Φ 12mm Diameter
- ⊙ Switch Rating: 2A/36VDC
- ⊙ Contact Configuration: 1NO
- ⊙ Operation Type: Momentary
- ⊙ The Crust material:Stainless steel
- ⊙ IP Degree: IP65(IP67 can be made to order) ,IK08



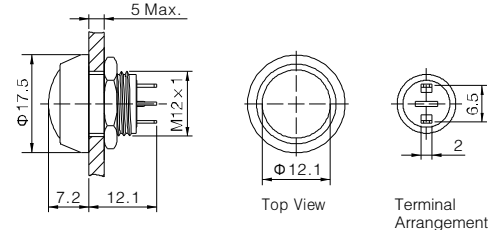
GQ12B-10/A

- ⊙ Φ 12mm Diameter
- ⊙ Switch Rating: 2A/36VDC
- ⊙ Contact Configuration: 1NO
- ⊙ Operation Type: Momentary
- ⊙ The Crust Material: Zn-Al Alloy(black)
- ⊙ Material of Actuator: PBT
- ⊙ Head Color(Δ): **R G Y O B W N**
- ⊙ IP Degree: IP65(IP67 made to order) ,IK08



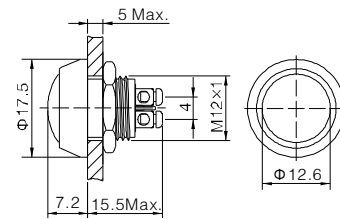
GQ12B-10/J/A

- ⊙ Φ 12mm Diameter
- ⊙ Switch Rating: 2A/36VDC
- ⊙ Contact Configuration: 1NO
- ⊙ Operation Type: Momentary
- ⊙ The Crust Material: Zn-Al Alloy(black)
- ⊙ Material of Actuator: PBT
- ⊙ Head Color(Δ): **R G Y O B W N**
- ⊙ IP Degree: IP65(IP67 made to order) ,IK08



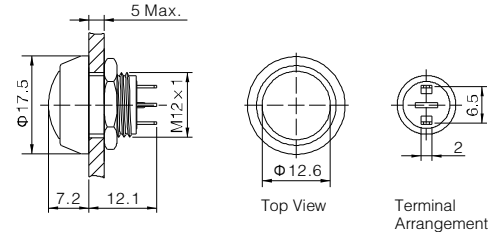
GQ12B-10/N

- ⊙ Φ 12mm Diameter
- ⊙ Switch Rating: 2A/36VDC
- ⊙ Contact Configuration: 1NO
- ⊙ Operation Type: Momentary
- ⊙ The Crust Material:Nickel Plated Brass (Chrome-plated can be made to order)
- ⊙ IP Degree: IP65(IP67 made to order) ,IK08



GQ12B-10/J/N

- ⊙ Φ 12mm Diameter
- ⊙ Switch Rating: 2A/36VDC
- ⊙ Contact Configuration: 1NO
- ⊙ Operation Type: Momentary
- ⊙ The Crust Material:Nickel Plated Brass (Chrome-plated can be made to order)
- ⊙ IP Degree: IP65(IP67 made to order) ,IK08



GQ12B-10/S		Material	But ton	PBT/Stainless Steel	GQ12B-10/J/S		Material	But ton	PBT/Stainless Steel
GQ12B-10/A			Body	Zn-Al Alloy/Stainless Steel/Nickel Plated Brass	GQ12B-10/J/A			Body	Zn-Al Alloy/Stainless Steel/Nickel Plated Brass
GQ12B-10/N			Base	PBT	GQ12B-10/J/N			Base	PBT
Terminal Type	Screw Terminal	Operation Pressure	About 5N	Terminal Type	Pin Terminal(2 × 0.5mm)	Operation Pressure	About 5N		
Screw Terminal	x(double-break slow-motion contact)	Operation Travel	About 2.5mm	Switching	x(double-break slow-motion contact)	Operation Travel	About 2.5mm		
Panel Thickness	1 ~ 5mm			Panel Thickness	1 ~ 5mm				
Panel Torque	0.3Nm			Torque	0.3Nm				
Mechanical Life	1,000,000 cycles			Mechanical Life	1,000,000 cycles				
Electrical Life	200,000 cycles	RoHS	Made to order	Electrical Life	200,000 cycles	RoHS	Made to order		