

GQ19

Metal Push Button



Part-number Description

Code of series	Product structure	The Front shape	Contact structure	Lamp type	Connet type	Lamp color and colorized button	Lamp voltage	Crust material
GQ19	S Short type No letter means standard type	B Domed F Flat Round H High Round PF Super Flat Head+ Flat Button PH Super Flat Head+ High Flat Button	10 1NO 01 1NC 1NC can be made to order for some products No letter means signal lamp	D Dot E Ring	J Pin terminal No letter means screw terminal	R Red G Green Y Yellow O Orange B Blue W White N Black	AC/DC 6V AC/DC 12V AC/DC 24V AC/DC 36V Note: Other voltage can be made to order	N Nickel-plated Brass S Stainless steel A Stainless steel Cr Chrome-plated (made to order)

Note: Pls read the catalogue carefully, and choose the right part-number according to the sign.

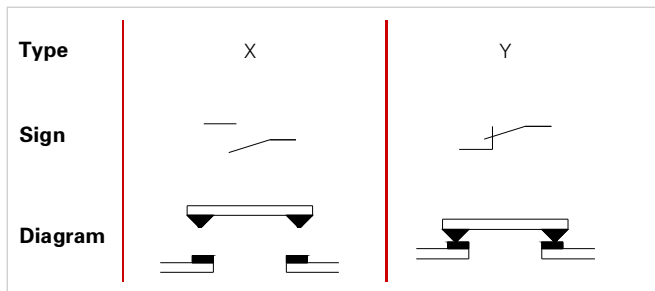
Specifications

Operating Temperature	-25°C~+55°C(no freezing) keep the air flowing around illuminated pushbutton
Operating Humidity	45~85%RH(no condensation)
Contact Resistance	≤50mΩ
Insulation Resistance	≥1000MΩ
Dielectric Strength	2000V,A C50Hz,5 seconds
Vibration Resistance	50Hz,Amplitude 1.2mm
Shock Resistance	> 10g
Solder Heat Resistance	320°C(or 30W soldering iron) no more than 2 seconds)

Standard and Certification

Standard	Certification Mark	Certificate Authority/Certification Number
EN61058-1:2002+A2:2008	CE	VOV/VT11018807
EN60947-1:2004	CE	CTS/CTS070706-01006-E

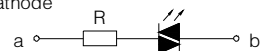
Switching Operation



Note: Using two terminals, double-break and slow-motion contact
Y type NC switch can be made to order for individual product, pls check the product description.

Lamp Ratings

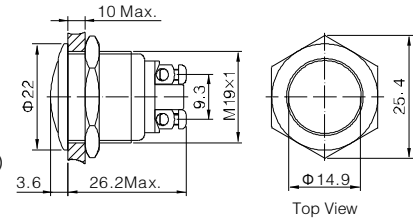
Lamp Type	LED lamp(AC/DC)
Led Color	R G Y O B W
Life	40000 hours (Reference)
Rated Voltage	AC/DC6V,AC/DC12V,AC/DC24V,AC/DC36V
Rated Current	About 15mA
DroppingWay	External resistance
Lamp Circuit Diagram	Using AC/DCLed lamp, the terminals have no difference of anode and cathode



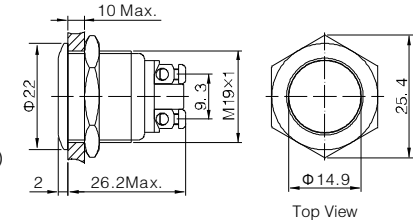
Note: DC LED and other voltage can be made to order.



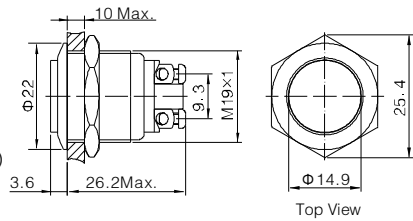
- ⊙ Φ 19mm Diameter
- ⊙ Switch Rating: 2A/36VDC
- ⊙ Contact Configuration: 1NO
- ⊙ Operation Type: Momentary
- ⊙ The Front Shape: Domed
- ⊙ The Crust Material: (⊙): Stainless steel(S)/
Nickel plated Brass(N)/Black anodized aluminium alloy(A)
- ⊙ IP Degree: IP65,IK09



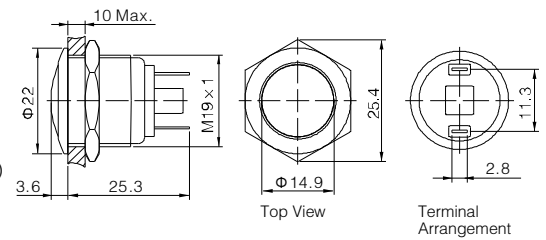
- ⊙ Φ 19mm Diameter
- ⊙ Switch Rating: 2A/36VDC
- ⊙ Contact Configuration: 1NO
- ⊙ Operation Type: Momentary
- ⊙ The Front Shape: Flat round
- ⊙ The Crust Material: (⊙): Stainless steel(S)/
Nickel plated Brass(N)/Black anodized aluminium alloy(A)
- ⊙ IP Degree: IP65,IK09



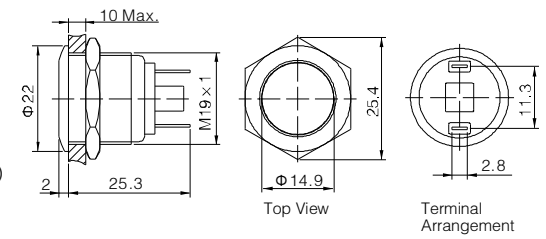
- ⊙ Φ 19mm Diameter
- ⊙ Switch Rating: 2A/36VDC
- ⊙ Contact Configuration: 1NO
- ⊙ Operation Type: Momentary
- ⊙ The Front Shape: High round
- ⊙ The Crust Material: (⊙): Stainless steel(S)/
Nickel plated Brass(N)/Black anodized aluminium alloy(A)
- ⊙ IP Degree: IP65,IK09



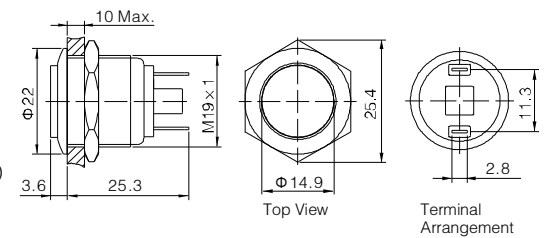
- ⊙ Φ 19mm Diameter
- ⊙ Switch Rating: 2A/36VDC
- ⊙ Contact Configuration: 1NO
- ⊙ Operation Type: Momentary
- ⊙ The Front Shape: Domed
- ⊙ The Crust Material: (⊙): Stainless steel(S)/
Nickel plated Brass(N)/Black anodized aluminium alloy(A)
- ⊙ IP Degree: IP65,IK09



- ⊙ Φ 19mm Diameter
- ⊙ Switch Rating: 2A/36VDC
- ⊙ Contact Configuration: 1NO
- ⊙ Operation Type: Momentary
- ⊙ The Front Shape: Flat round
- ⊙ The Crust Material: (⊙): Stainless steel(S)/
Nickel plated Brass(N)/Black anodized aluminium alloy(A)
- ⊙ IP Degree: IP65,IK09



- ⊙ Φ 19mm Diameter
- ⊙ Switch Rating: 2A/36VDC
- ⊙ Contact Configuration: 1NO
- ⊙ Operation Type: Momentary
- ⊙ The Front Shape: High round
- ⊙ The Crust Material: (⊙): Stainless steel(S)/
Nickel plated Brass(N)/Black anodized aluminium alloy(A)
- ⊙ IP Degree: IP65,IK09



GQ19B-10/⊙ GQ19F-10/⊙ GQ19H-10/⊙		Material	Button	Stainless steel	GQ19B-10/J/⊙ GQ19F-10/J/⊙ GQ19H-10/J/⊙		Material	Button	Stainless steel
Terminal Type	Screw Terminal		Body	Stainless steel/Nickel-plated brass	Terminal Type	Pin terminal(2.8 × 0.5mm)		Body	Stainless steel/Nickel-plated brass
	Switching		x(double-break slow-motion contact)	Base		PBT		Operation Pressure	About 4N
Panel Thickness	1 ~ 6mm	Operation Pressure	About 4N	Operation Travel	About 2.5mm	Panel Thickness	1 ~ 6mm	Operation Pressure	About 4N
Torque	0.8Nm	Operation Travel	About 2.5mm	Switching	x(double-break slow-motion contact)	Torque	0.8Nm	Operation Travel	About 2.5mm
Mechanical Life	1,000,000 cycles	Terminal Type	Pin terminal(2.8 × 0.5mm)	Panel Thickness	1 ~ 6mm	Mechanical Life	1,000,000 cycles	Terminal Type	Pin terminal(2.8 × 0.5mm)
Electrical Life	200,000 cycles	Switching	x(double-break slow-motion contact)	Torque	0.8Nm	Electrical Life	200,000 cycles	Switching	x(double-break slow-motion contact)
		Mechanical Life	1,000,000 cycles	Mechanical Life	1,000,000 cycles			Mechanical Life	1,000,000 cycles
		Electrical Life	200,000 cycles	Electrical Life	200,000 cycles			Electrical Life	200,000 cycles
		RoHS	Made to order	RoHS	Made to order			RoHS	Made to order