



ISSUE 12; July 2014 - RoHS 2011/65/EU

Description

- Standard 7 x 5mm, 2.5V surface mount oscillator in a ceramic package, with a hermetically sealed metal lid



Frequency Parameters

- Frequency 500.0kHz to 156.0MHz
- Frequency Stability $\pm 25.00\text{ppm}$ to $\pm 100.00\text{ppm}$

Electrical Parameters

- Supply Voltage 2.5V $\pm 5\%$

Operating Temperature Ranges

- 10 to 70°C
- 40 to 85°C

Output Details

- Output Compatibility CMOS
- Drive Capability 15pF max

Output Control

- Logic '1' (>70% VS) to pad 1 enables oscillator output
Logic '0' (<30% VS) to pad 1 disables oscillator output; the oscillator output goes to the high impedance state
No connection to pad 1 enables oscillator output
- Standby Current: 10µA max

Environmental Parameters

- Storage Temperature Range: -55 to 125°C
- Shock: MIL-STD-202, Method 213, Condition E
- Vibration: MIL-STD-883, Method 2007, Condition A

Ordering Information

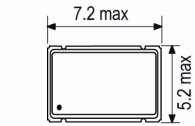
- Frequency*
Model*
Output
Frequency Stability*
Operating Temperature Range*
Supply Voltage
(*minimum required)
- Example
10.0MHz CFPS-32
CMOS $\pm 50\text{ppm}$ -10 to 70C 2.5V

Compliance

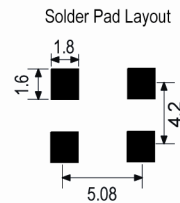
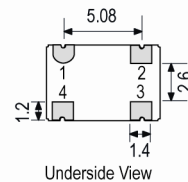
- RoHS Status Compliant
- REACH Status Compliant
- MSL Rating (JDEC-STD-033): Not Applicable



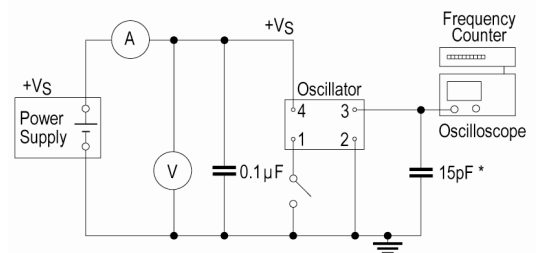
Outline (mm)



- Pad Connections
- Standby Operation
 - GND
 - Output
 - +VS



Test Circuit



* Inclusive of jigging and equipment capacitance

Sales Office Contact Details:

UK: +44 (0)1460 270200

France: +33 (0)5 34 50 91 18

Email: info@iqdfrequencyproducts.com

Germany: +49 (0) 30 408 192 300

USA: +1 408.273.4530

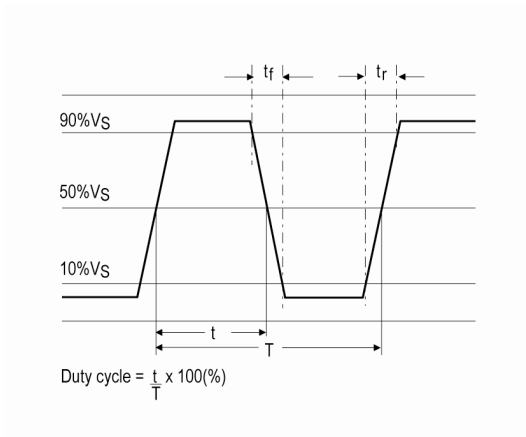
Web: www.iqdfrequencyproducts.com



Packaging Details

- Pack Style: Reel Tape & reel in accordance with EIA-481-D
Pack Size: 1,000
- Pack Style: Bulk Loose in bulk pack
Pack Size: 100
- Pack Style: Cutt In tape, cut from a reel
Pack Size: 1
- Pack Style: R250 Tape & reel in accordance with EIA-481-D
Pack Size: 250

Wave Form



Electrical Specification - maximum limiting values 2.5V ±5%

Frequency Min	Frequency Max	Temperature Range	Stability (min)	Current Draw	Rise and Fall Time	Duty Cycle
		°C	ppm	mA	ns	%
500.0kHz	9.999999MHz	-40 to 85 -10 to 70	±25.0 ±25.0	6 6	5 5	40/60 40/60
10.0MHz	19.999999MHz	-40 to 85 -10 to 70	±25.0 ±25.0	8 8	5 5	40/60 40/60
20.0MHz	31.999999MHz	-40 to 85 -10 to 70	±25.0 ±25.0	8 8	5 5	40/60 40/60
32.0MHz	49.999999MHz	-40 to 85 -10 to 70	±25.0 ±25.0	20 20	5 5	40/60 40/60
50.0MHz	79.999999MHz	-40 to 85 -10 to 70	±25.0 ±25.0	20 20	4 4	40/60 40/60
80.0MHz	99.999999MHz	-40 to 85 -10 to 70	±25.0 ±25.0	25 25	3 3	40/60 40/60
100.0MHz	156.0MHz	-40 to 85 -10 to 70	±25.0 ±25.0	30 30	3 3	40/60 40/60

*This document was correct at the time of printing; please contact your local sales office for the latest version.
[Click to view latest version on our website.](#)*

Sales Office Contact Details:

UK: +44 (0)1460 270200

Germany: +49 (0) 30 408 192 300

France: +33 (0)5 34 50 91 18

USA: +1 408.273.4530

Email: info@iqdfrequencyproducts.com

Web: www.iqdfrequencyproducts.com