

SPECIFICATION

Customer Name

Product Name

GSM Antenna

Identification

A N 1 0 9

Customer Material

Date

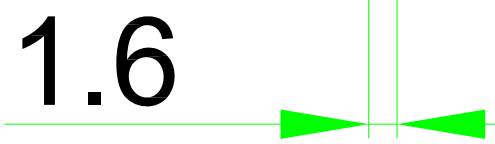
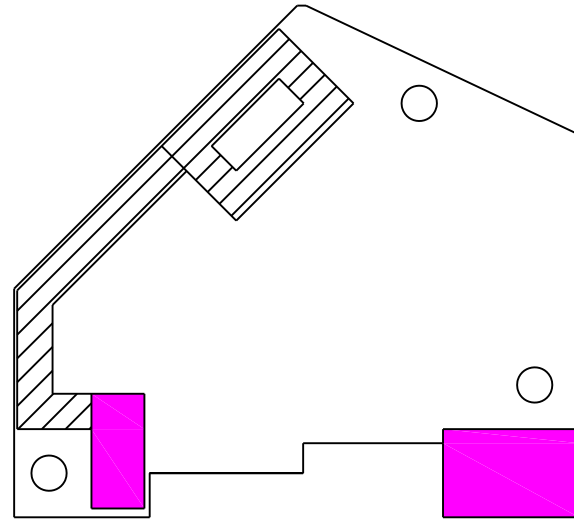
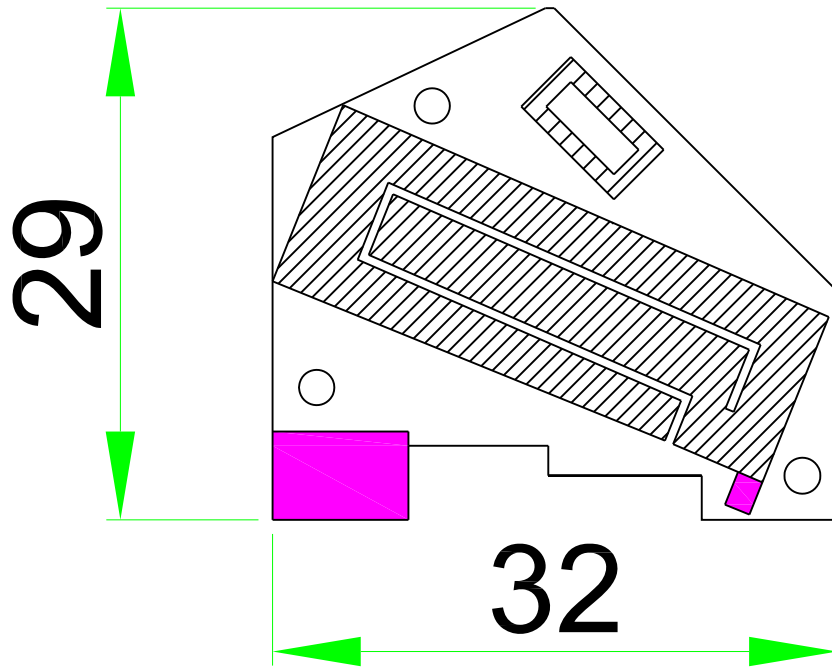
2019.04.29

Customer confirmation	Supplier

RoHS

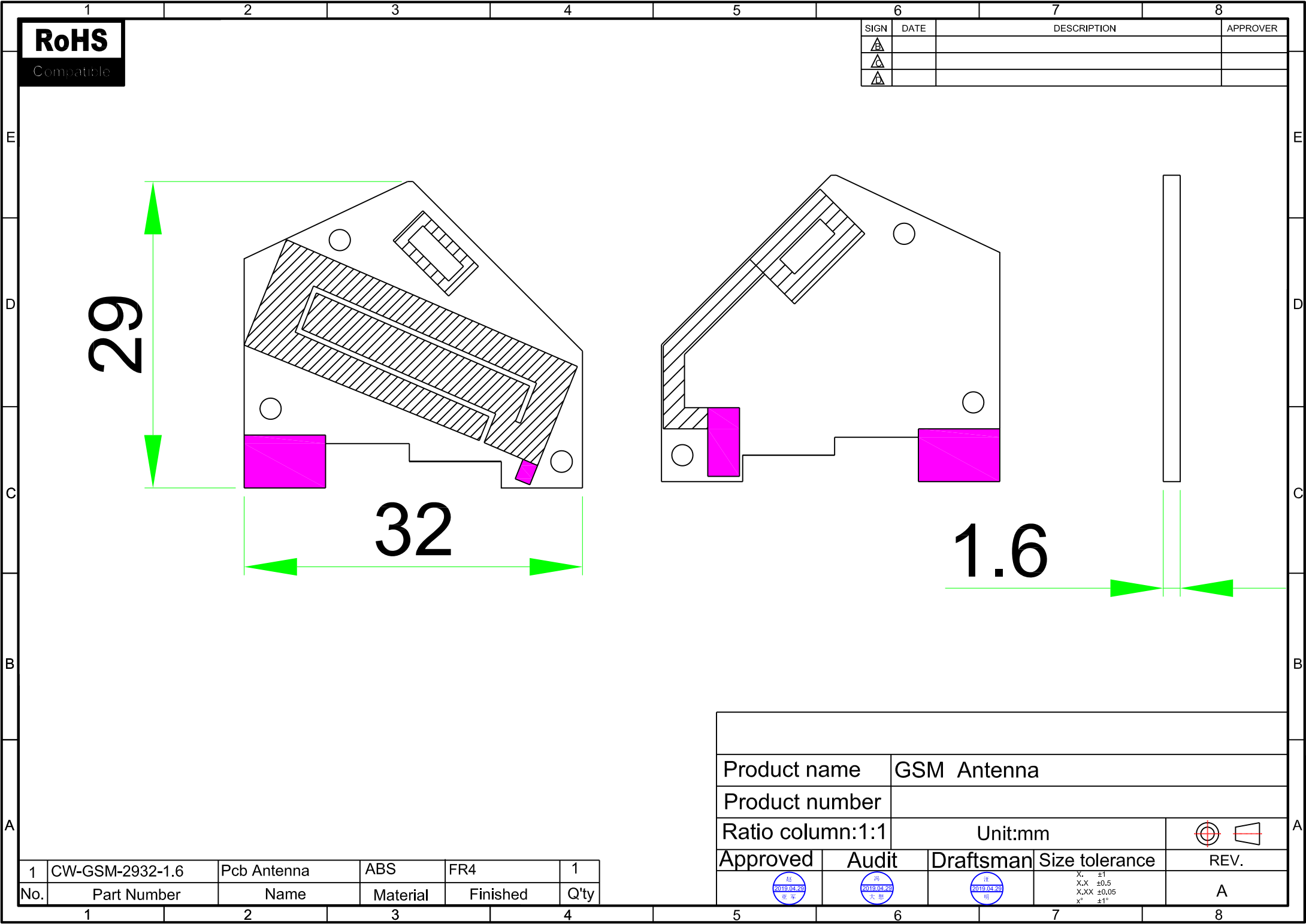
Compatible

SIGN	DATE	DESCRIPTION	APPROVER
△			
△			
△			



1	CW-GSM-2932-1.6	Pcb Antenna	ABS	FR4	1
No.	Part Number	Name	Material	Finished	Q'ty

Product name		GSM Antenna		
Product number				
Ratio column:1:1		Unit:mm		
Approved	Audit	Draftsman	Size tolerance	REV.
			X. ±1 X.X ±0.5 X.XX ±0.05 X° ±1°	A



Index:

- 1. Reliability Testing**
- 2. Specification**
- 3. S Parameter Test Data**
- 4. Antenna Radiation Pattern**



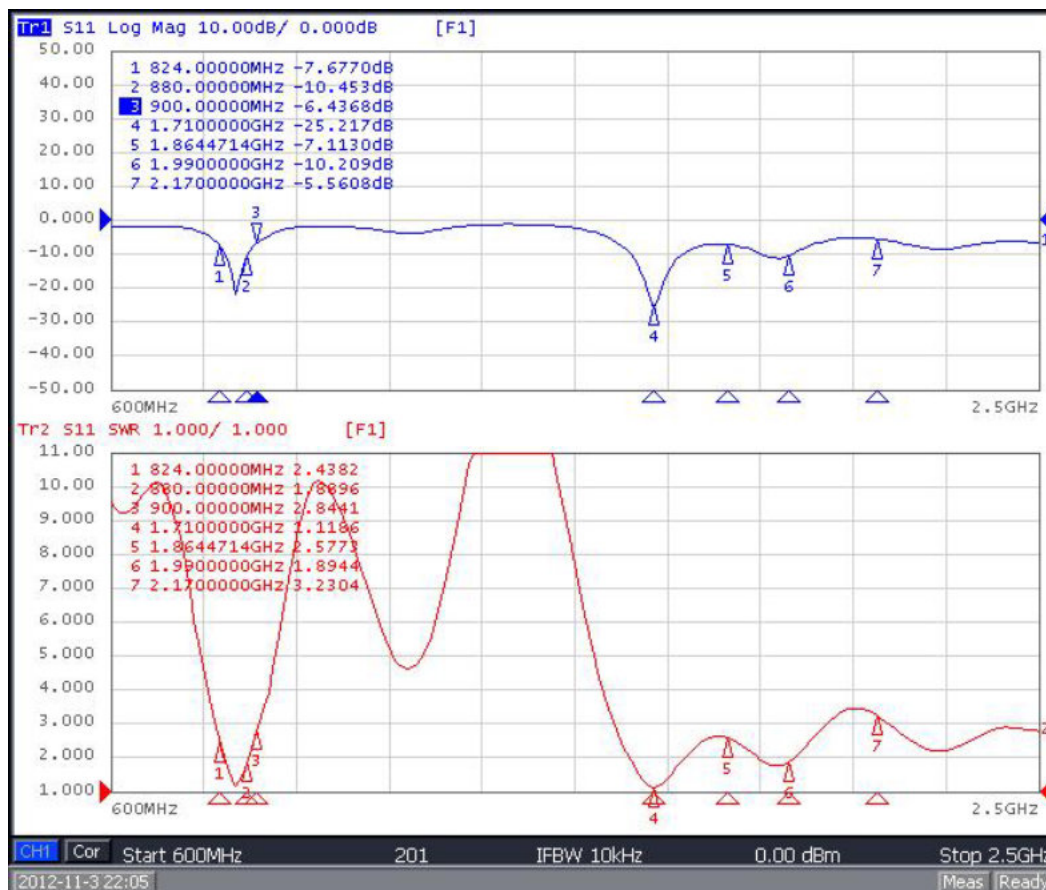
1. Reliability Testing

Test Item	Procedure	Requirement
1. Visual inspection and Dimension Check	Applicable methods using x5 magnification	follow specification
2. Rapid Changing of Temperature	-40°C (30minutes) to 80°C (30minutes); 24 cycles	After 2 hours recovery: 1. no visible damage 2. bandwidth tolerance < ±5%
3. Damp Heat	24 hours at 60°C; 90 ~ 95% RH	After 2 hours recovery: 1. no visible damage 2. bandwidth tolerance < ±5%
4. Endurance	24 hours at 80°C	After 2 hours recovery: 1. no visible damage 2. bandwidth tolerance < ±5%
5. Connector Pull Strength Test	>= 1.0 Kg	Hold 2~3S: 1. no visible damage 2. bandwidth tolerance < ±5%

2. Specification

A. Electrical Characteristics	
Working Frequency	824-960/1710-2100MHz
S.W.R	<3.5
Typical Antenna Gain	0 dBi
Polarization	Linear
Impedance	50 Ohm
B. Material	
Material of Plastic	PCB
Dimension	32*29*1.6 mm
C. Environmental	
Operation Temperature	- 45 °C ~ + 85 °C
Storage Temperature	- 45 °C ~ + 85 °C

3. S.W.R. Testing Result



4. Antenna Radiation Pattern

5. Testing Equipment Specification:

Antenna Anechoic Chamber Dimension: 7x3 x3 m

Quiet Zone: 600mm @1 GHz

Isolation: >100dB @ 1 MHz ~ 10 GHz

Testing Equipment: Agilent E5071C

Received Antenna: 0.4 ~ 6.0 GHz for Gain Calibration

Double Ridged Horn Antenna

