

BOM LIST			
ITEM	PART NAME	Q'ty	NOTES
1	PLASTIC HOOD	2	ABS
2	2.1 LONG BOLT	2	#4-40
	2.2 SHORT BOLT	2	#4-40
3	NUT	2	M3
4	LONG SCREW	2	M3
5	SMALL WASHER	2	
6	SHORT SCREW	2	M3
7	METAL WASHER	2	M3

REV.	DESCRIPTION	DRAWN	CHECKED	APPROVED
A	NEW RELEASE	LJH 10/26/05'	~	LJC 10/26/05'
B	整理图面	YCH 09/13/07'	~	LJC 09/13/07'
C	MINUS P/N CODE	JLZ 12/16/14'	~	

NOTES:

1. PART NUMBER CODE:

DS1046 - 25 X X X X

Washer type (C)  
1: Metal

Bolt type

L: Long

S: Short

Packing type

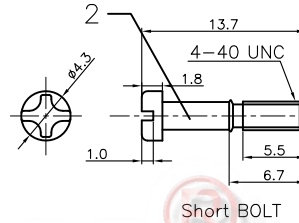
1: Mix packing

Cover Material

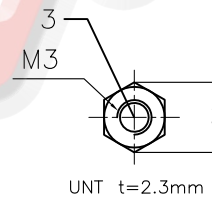
C: Chromium plating

Position

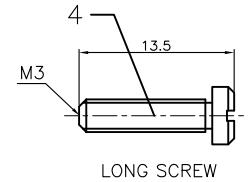
25: 25pin



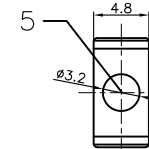
Short BOLT



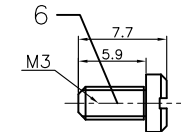
UNT t=2.3mm



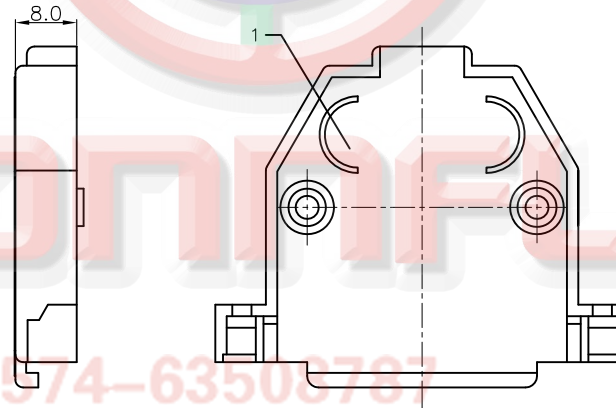
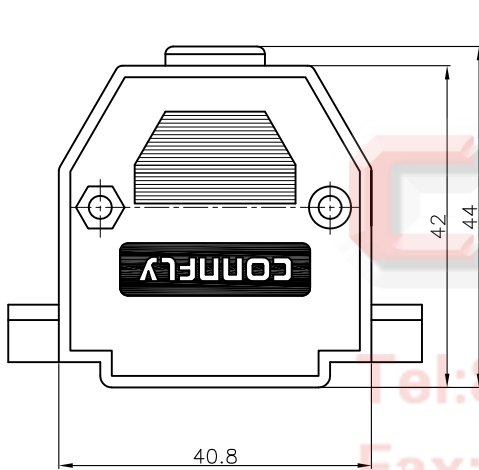
LONG SCREW



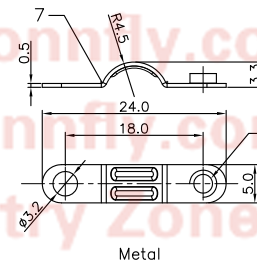
SMALL WASHER



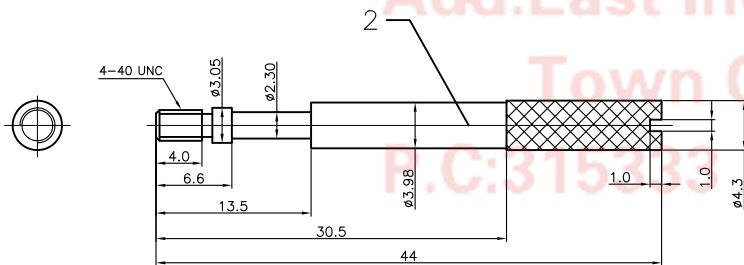
SHORT SCREW



Tel: 86-574-63503787  
Fax: 86-574-63510817  
E-mail: sale@connfly.com  
http://www.connfly.com  
Add: East Industry Zone KuangYan  
Town Cixi Ningbo China  
P.C: 315483



Metal




Long BOLT

GENERAL TOLERANCE	ANGLE TOLERANCE
X. ±0.60	X. ±5°
.X ±0.38	.X ±3°
.XX ±0.25	.XX ±2°

PROJECTION	TITLE
UNITS mm	D-SUB 25pin Hood Chromium plated
SHEET SIZE A4	SERIES DS1046 SERIES

DRAWING TYPE	COSTOMER
SCALE 1:1	SHEET 1 OF 1
DRAWING NO. C-DS1046-25XXXX	

 晨翔电子有限公司  
**CONNFLY CONNFLY ELECTRONIC CO. LTD**