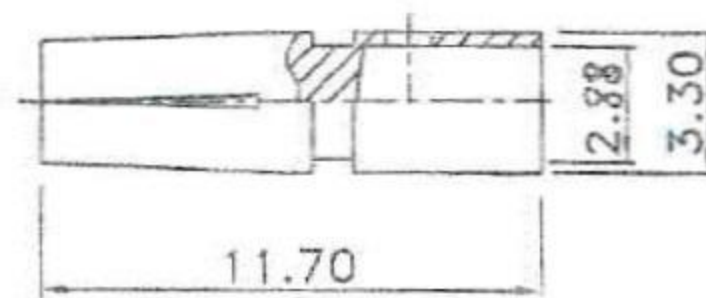
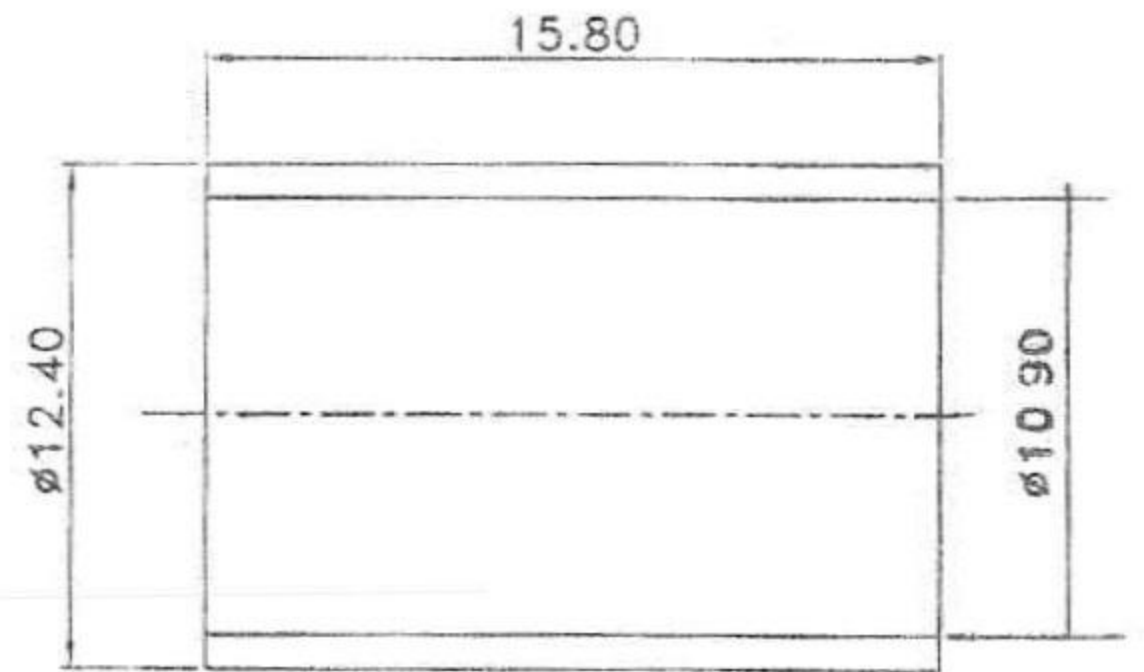
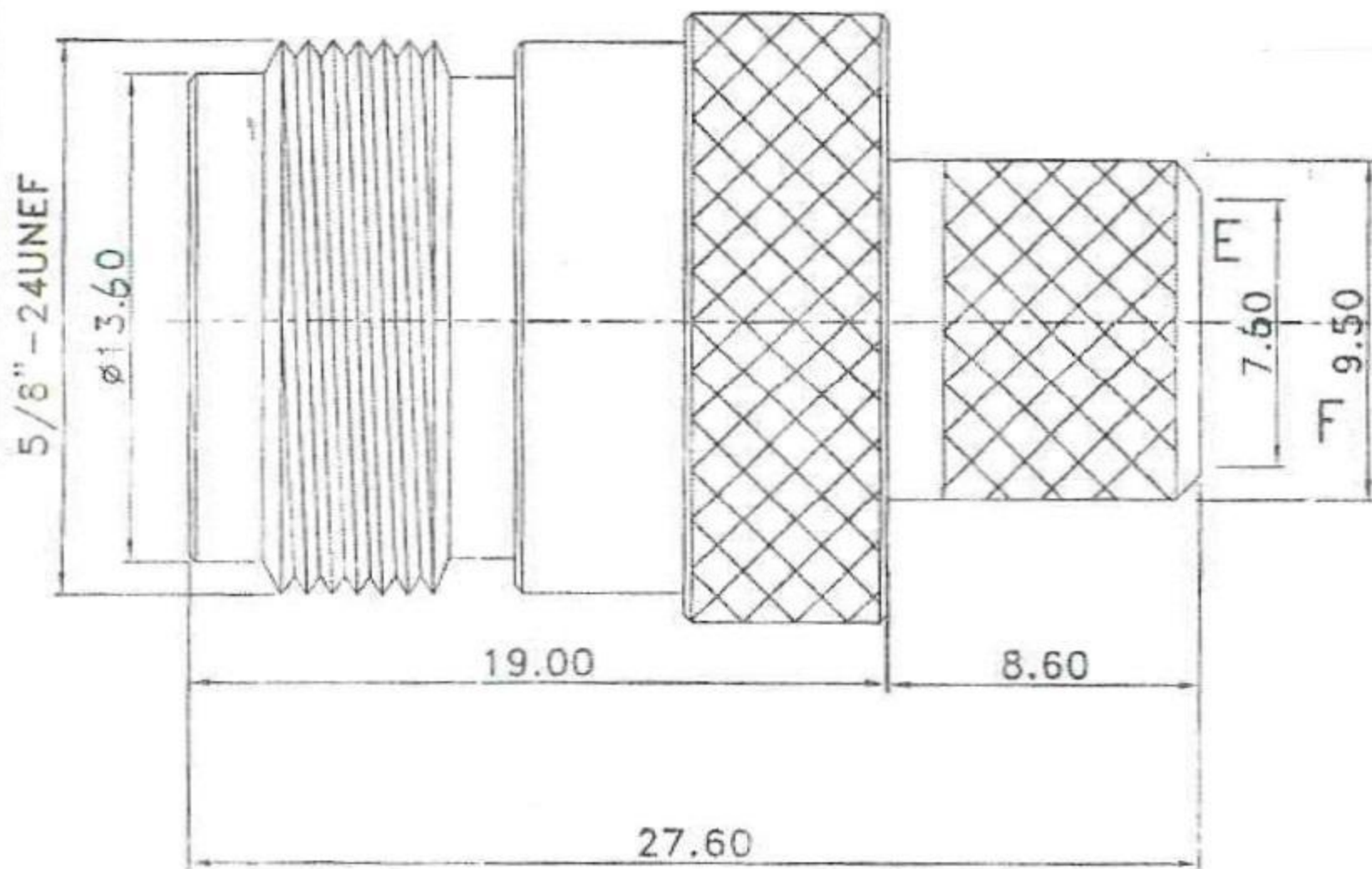


RLV	DESCRIPTION	DRAWN	DATE



5	FERRULE	1	BRASS	NICKEL
4	SLEEVE	1	BRASS	NICKEL
3	DIELECTRIC	1	PTFE	NONE
2	PIN	1	BRASS	GOLD
1	BODY	1	BRASS	NICKEL

UNLESS OTHERWISE SPECIFIED  
 1. REMOVE ALL BURRS.  
 2. BREAK ALL CONNERS & EDGES CO.15 MAX.  
 3. CHAMFER 1ST & LAST THREADS 45°  
 4. DIAMETERS ON COMMON CENTERS.  
 TO BE CONCENTRIC WITH D.T.F.  
 5. ALL DIMENSIONS ARE AFTER PLATING.

\* MAJOR DIMENSION  
 UNLESS OTHERWISE NOTED TOLERANCES  
 0.5-6 ±0.2  
 6-30 ±0.4  
 30-120 ±0.6  
 120-315 ±1.0  
 ANGLES ±1°



SCALE 4/1 UNIT MM DRAWN DATE 08/04/23

**N106**

**N FEMALE CRIMP TYPE**

**HDF400**