

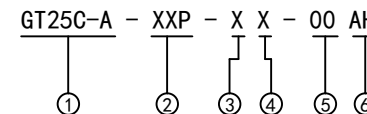
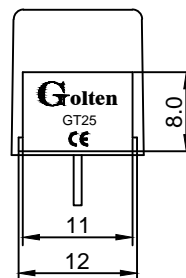
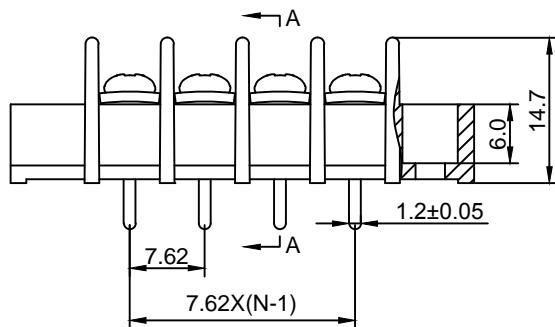
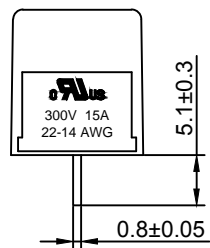
**Material :**

- (a) Housing : PA66(UL94V-0)
- (b) Terminal : Brass , Tin Plated
- (c) Screws : Steel , Ni Plated

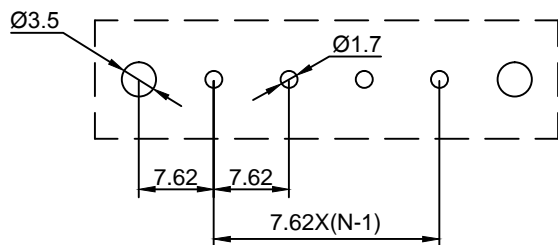
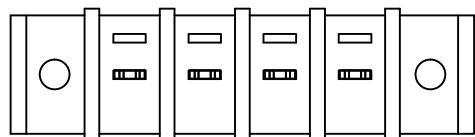
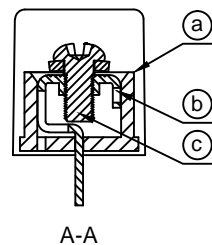
**Electrical :**

- |                               |                |                    |
|-------------------------------|----------------|--------------------|
|                               | UL             | IEC                |
| 1. Rated Voltage :            | 300V           | 250V               |
| 2. Rated Current :            | 15A            | 24A                |
| 3. Torque Value :             | M3 , 4.43Lb.in | M3 , 0.5N.m        |
| 4. Wire Range :               | 22-14AWG       | 2.5mm <sup>2</sup> |
| 5. Stripping Length :         | 7-8mm          |                    |
| 6. Withstanding Voltage :     | AC1600V/1Min.  |                    |
| 7. Operating Temperature :    | -40°C~+105°C   |                    |
| 8. RoHS Compliance            |                |                    |
| 9. Safty Approval :           |                |                    |
| 10. Undimensioned Tolerances: |                |                    |

Pitch Range In mm			Nominal Dimension Range In mm					—	∩	∇
≤6	6 ~ 10	10 ~ 24	≤30	30 ~ 60	60 ~ 100	100 ~ 150	>150	0.05/10		
±0.10	±0.15	±0.25	±0.20	±0.30	±0.50	±0.70	±1.00	±0.1°		



- ① Series No.
- ② Poles  
02 02Contacts  
03 03Contacts  
...  
24 24Contacts
- ③ 1 Single Pitch  
2 Double Pitch
- ④ Color: 1 Grey  
2 Blue  
3 Black(Standard For AH)  
4 Green  
5 Orange  
6 Red  
7 Transparent  
8 Yellow  
9 White
- ⑤ Customer Request : 00--Standard
- ⑥ AH--Standard(PA66)



DETACHED LISTS	<b>Grolten</b> 宁波冠泰电子有限公司 NINGBO GOLTEN ELECTRONICS CO., LTD.	
	APPD: MA_7/16/16'	PART NO. GT25C-A-XXP-XX-00AH
	CHKD: Yu_7/15/16'	
	DRFT: Chen_7/14/16'	
		REV 1
THIRD ANGLE PROJECTION		SHEET 1/1
MM (INCH)		SCALE 1/1
DO NOT SCALE DRAWING		