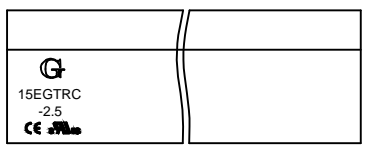
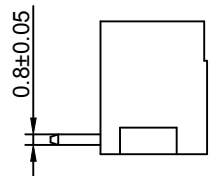
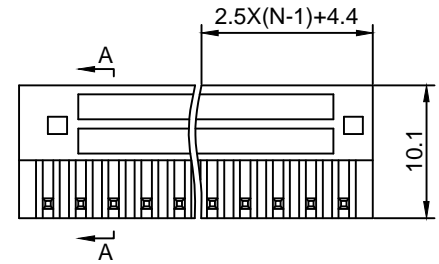
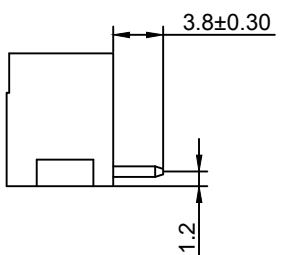


Material :  
 (a) Housing : PA66(UL94V-0)  
 (b) Pin Header : Brass , Tin Plated

Electrical :  
 1. Rated Voltage : 150V  
 2. Rated Current : 4A  
 3. Withstanding Voltage : AC1300V/1Min.  
 4. Operating Temperature : -40°C~+105°C  
 5. RoHS Compliance  
 6. Safety Approval :   
 7. Undimensioned Tolerances:

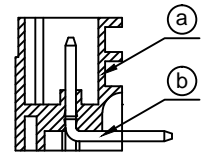
Pitch Range In mm		Nominal Dimension Range In mm					—	∩	∇
≤6	6 ~ 10	10 ~ 24	≤30	30 ~ 60	60 ~ 100	100 ~ 150	>150	0.05/10	
±0.10	±0.15	±0.25	±0.20	±0.30	±0.50	±0.70	±1.00	±0.1°	



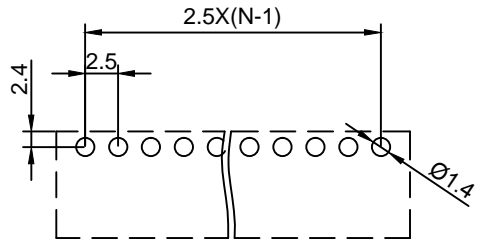
B向

15EGTRC - 2.5 - XXP - X X - 00 AH  
 ① ② ③ ④ ⑤ ⑥ ⑦

- ① Series No.
- ② Pitch
- ③ Poles  
02 02Contacts  
03 03Contacts  
...  
24 24Contacts
- ④ 1 Single Pitch  
2 Double Pitch
- ⑤ Color: 1 Grey  
2 Blue  
3 Black  
4 Green(Standard For AH)  
5 Orange  
6 Red  
7 Transparent  
8 Yellow  
9 White
- ⑥ Customer Request : 00--Standard
- ⑦ AH--Standard(PA66)



A-A



DETACHED LISTS	<b>Grolten</b> NINGBO GOLTEN ELECTRONICS CO., LTD.		宁波冠泰电子有限公司		
	APPD: MA_8/13/16'	CHKD: Yu_8/12/16'	PART NO. 15EGTRC-2.5-XXP-XX-00AH		
	DRFT: Chen_8/11/16'	DRAWING NO.		REV	1
	 THIRD ANGLE PROJECTION		MM (INCH)	DO NOT SCALE DRAWING	SHEET
				SCALE	1/1