

B向

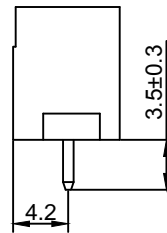
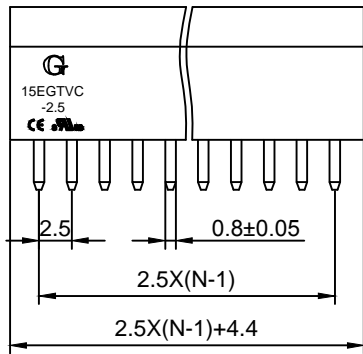
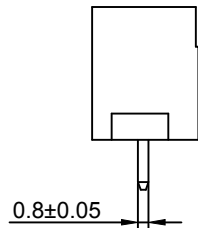
Material :

- (a) Housing : PA66(UL94V-0)
- (b) Pin Header : Brass , Tin Plated

Electrical :

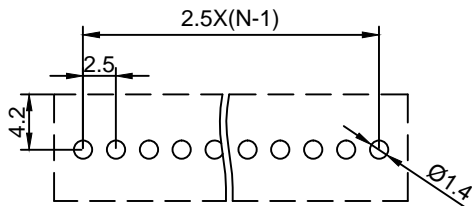
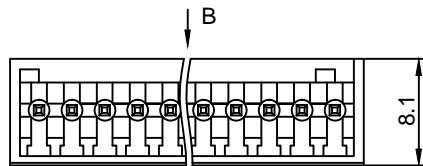
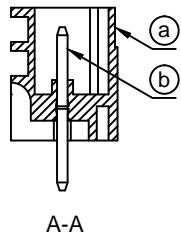
- 1.Rated Voltage : 150V UL IEC
- 2.Rated Current : 4A 250V
- 3.Withstanding Voltage : AC1300V/1Min.
- 4.Operating Temperature : -40°C~+105°C
- 5.RoHS Compliance
- 6.Safety Approval :
- 7.Undimensioned Tolerances:

Pitch Range In mm			Nominal Dimension Range In mm					—	∩	∇
≤6	6 ~ 10	10 ~ 24	≤30	30 ~ 60	60 ~ 100	100 ~ 150	>150	0.05/10		
±0.10	±0.15	±0.25	±0.20	±0.30	±0.50	±0.70	±1.00	±0.1°		



15EGTVC - 2.5 - XXP - X X - 00 AH

①                      ②                      ③                      ④                      ⑤                      ⑥                      ⑦



- ① Series No.
- ② Pitch
- ③ Poles  
02 02Contacts  
03 03Contacts  
...  
24 24Contacts
- ④ 1 Single Pitch  
2 Double Pitch
- ⑤ Color: 1 Grey  
2 Blue  
3 Black  
4 Green(Standard For AH)  
5 Orange  
6 Red  
7 Transparent  
8 Yellow  
9 White
- ⑥ Customer Request : 00--Standard
- ⑦ AH--Standard(PA66)

DETACHED LISTS	<b>Grolten</b> 宁波冠泰电子有限公司 NINGBO GOLTEN ELECTRONICS CO., LTD.							
	APPD: MA_8/13/16'	PART NO. 15EGTVC-2.5-XXP-XX-00AH						
	CHKD: Yu_8/12/16'							
	DRFT: Chen_8/11/16'							
 THIRD ANGLE PROJECTION		<table border="1"> <tr> <td>REV</td> <td>1</td> </tr> <tr> <td>SHEET</td> <td>1/1</td> </tr> <tr> <td>SCALE</td> <td>1/1</td> </tr> </table>	REV	1	SHEET	1/1	SCALE	1/1
REV	1							
SHEET	1/1							
SCALE	1/1							
 MM (INCH) DO NOT SCALE DRAWING								