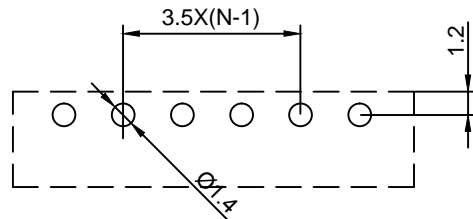
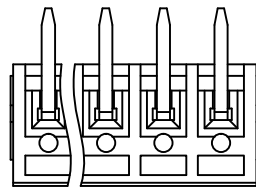
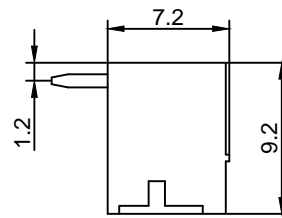
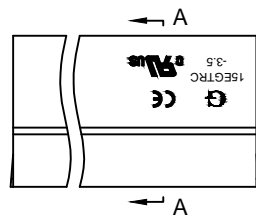
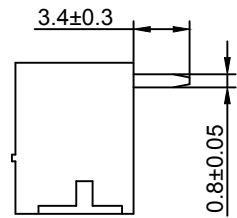
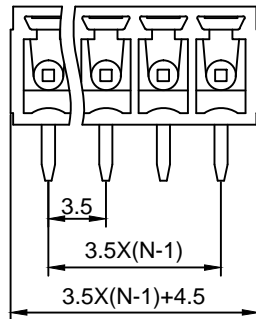


A-A



Material :

- ① Housing : PA66(UL94V-0)
- ② Pin Header : Brass , Tin Plated

Electrical :

- 1.Rated Voltage : 300V
- 2.Rated Current : 8A
- 3.Withstanding Voltage : AC1600V/1Min.
- 4.Operating Temperature : -40°C~+105°C
- 5.RoHS Compliance
- 6.Safety Approval :
- 7.Undimensioned Tolerances:

| Pitch Range In mm | | | Nominal Dimension Range In mm | | | | | — | ∩ | ∇ |
|-------------------|--------|---------|-------------------------------|---------|----------|-----------|-------|---------|---|---|
| ≤6 | 6 ~ 10 | 10 ~ 24 | ≤30 | 30 ~ 60 | 60 ~ 100 | 100 ~ 150 | >150 | 0.05/10 | | |
| ±0.10 | ±0.15 | ±0.25 | ±0.20 | ±0.30 | ±0.50 | ±0.70 | ±1.00 | ±0.1° | | |

15EGTRC - 3.5 - XXP - X X - 00 AH

① ② ③ ④ ⑤ ⑥ ⑦

- ① Series No.
- ② Pitch
- ③ Poles
02 02Contacts
03 03Contacts
∴
24 24Contacts
- ④ 1 Single Pitch
2 Double Pitch
- ⑤ Color: 1 Grey
2 Blue
3 Black
4 Green(Standard For AH)
5 Orange
6 Red
7 Transparent
8 Yellow
9 White
- ⑥ Customer Request : 00--Standard
- ⑦ AH--Standard(PA66)

| | | | | | |
|------------------------|-------------------------------------------------------|--------------------|----------------------------------|----------------------|-------|
| DETACHED LISTS | Grolten NINGBO GOLTEN ELECTRONICS CO., LTD. | | 宁波冠泰电子有限公司 | | |
| | APPD: MA_11/24/16' | CHKD: Yu_11/23/16' | PART NO. 15EGTRC-3.5-XXP-XX-00AH | | |
| | DRFT: Chen_11/22/16' | DRAWING NO. | | REV | 1 |
| | | | MM (INCH) | DO NOT SCALE DRAWING | SHEET |
| THIRD ANGLE PROJECTION | | | | SCALE | 1/1 |