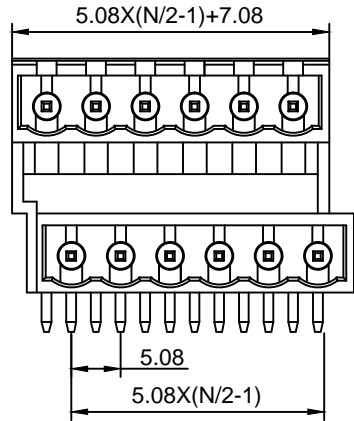


A-A



B向

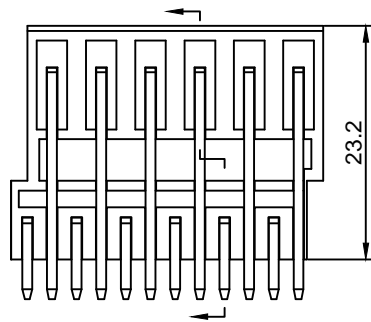
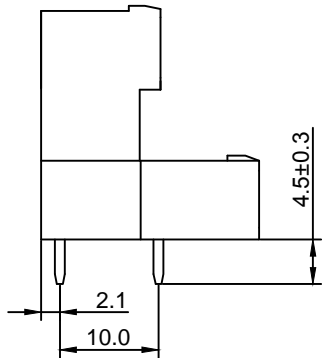
Material :

- ① Housing : PA66(UL94V-0)
- ② Pin Header 1 : Brass ,Tin Plated
- ③ Pin Header 2 : Brass ,Tin Plated

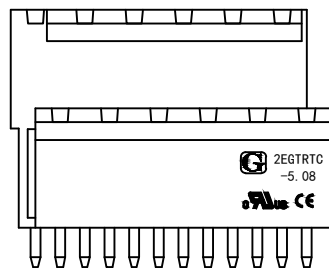
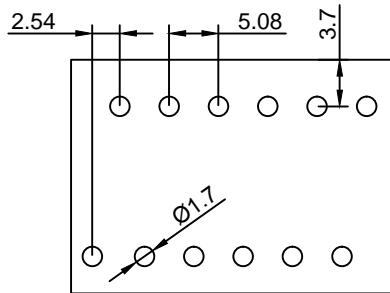
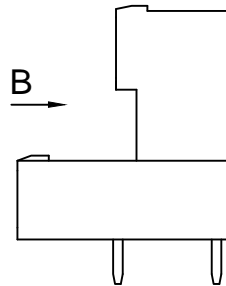
Electrical :

- 1.Rated Voltage : 300V UL IEC 320V
- 2.Rated Current : 15A 10A
- 6.Withstanding Voltage : AC1600V/1Min.
- 7.Operating Temperature : -40°C~+105°C
- 8.RoHS Compliance
- 9.Safety Approval :
- 10.Undimensioned Tolerances:

Pitch Range In mm		Nominal Dimension Range In mm					-	∩	∇
≤6	6 ~ 10	10 ~ 24	≤30	30 ~ 60	60 ~ 100	100 ~ 150	>150	0.05/10	
±0.10	±0.15	±0.25	±0.20	±0.30	±0.50	±0.70	±1.00	±0.1°	



B



2EGTRTC - 5.08 - XXP - X X - XX AH

① ② ③ ④ ⑤ ⑥ ⑦

- ① Series No.
- ② Pitch
- ③ Poles  
04 04Contacts  
06 06Contacts  
...  
48 48Contacts
- ④ 1 Single Pitch  
2 Double Pitch
- ⑤ Color: 1 Grey  
2 Blue  
3 Black  
4 Green(Standard For AH)  
5 Orange  
6 Red  
7 Transparent  
8 Yellow  
9 White
- ⑥ Customer Request: 00--Standard
- ⑦ AH--Standard(PA66)

DETACHED LISTS			宁波冠泰电子有限公司 NINGBO GOLTEN ELECTRONICS CO., LTD.	
	APPD: MA_4/13/17'	PART NO. 2EGTRTC-5.08-XXP-XX-00AH		
	CHKD: Yu_4/12/17'	DRAWING NO.		
	DRFT: Chen_4/11/17'	REV 1		
 THIRD ANGLE PROJECTION		 MM (INCH) DO NOT SCALE DRAWING		SHEET 1/1 SCALE 1/1

8

7

6

5

4

3

2

1

H

G

F

E

D

C

B

A