

inserts:		page
<b>CK</b> .....	3 poles + ⊕	36
<b>CK</b> .....	4 poles + ⊕	36
<b>CKS</b> .....	3 poles + ⊕	37
<b>CKS</b> .....	4 poles + ⊕	37
<b>CD</b> .....	7 poles + ⊕	39
<b>CD</b> .....	8 poles	40
<b>CQ</b> .....	5 poles + ⊕	63
<b>CQ</b> .....	12 poles + ⊕	62

overall dimensions:  
21 x 21 mm

bulkhead housings

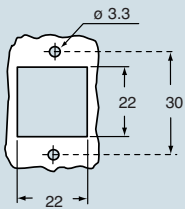


angled bulkhead housings



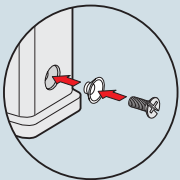
description	part No.	part No. (entry - Pg 11)	part No. (entry - M 20)
with lever <sup>1)</sup>	<b>CK 03 I</b> (white)		
with lever <sup>1)</sup>	<b>CK 03 IN</b> (black)		
without cable gland outlet, with lever <sup>1)</sup>		<b>CK 03 IA</b> (white)	
without cable gland outlet, with lever <sup>1)</sup>		<b>CK 03 IAN</b> (black)	
with threaded entry and lever <sup>1)</sup>		<b>CK 03 IAPS</b> (white)	<b>MK IAP20</b> (white)
with threaded entry and lever <sup>1)</sup>		<b>CK 03 IAPNS</b> (black)	<b>MK IAPN20</b> (black)
seal and screw kit for IP66/IP67 <sup>2)</sup> for CK, CQ 05, CKS inserts	<b>CKR 65</b>	<b>CKR 65</b>	
seal and screw kit for IP66/IP67 <sup>2)</sup> for CD 07/08 inserts	<b>CKR 65 D</b>	<b>CKR 65 D</b>	

panel cut-out for enclosures, in mm



- enclosures with IP44 degree of protection, obtained by the elimination of the flexible washer normal supplied with the insert
- To achieve the IP66/IP67 protection rating, a kit is available which includes a seal to be fitted under the insert fastening screw supplied with the kit (see example illustrated), instead of the screw with spring washer supplied with the insert

**Note:**  
The CQ 12 inserts are already fitted with seal and screw, allowing IP66/IP67 protection rating to be achieved.

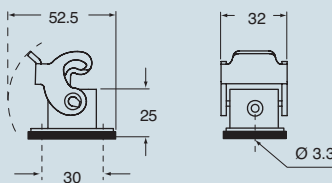


**CALUS**® Type 12  
Type 4/4X only  
with CKR 65 (D)

dimensions indicated are not binding  
and may be changed without notice

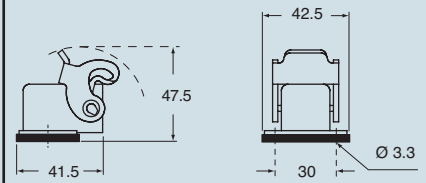
dimensions in mm

CK I(N)

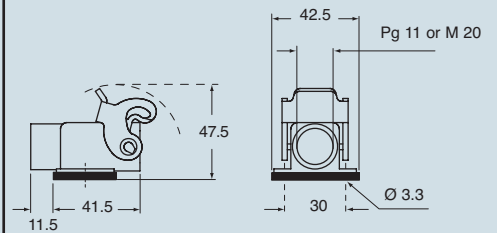


dimensions in mm

CK IA(N)



CK IAP(N)S and MK IAP(N)



size 21.21

inserts:		page
CK .....	3 poles + ⊕	36
CK .....	4 poles + ⊕	36
CKS .....	3 poles + ⊕	37
CKS .....	4 poles + ⊕	37
CD .....	7 poles + ⊕	39
CD .....	8 poles	40
CQ .....	5 poles + ⊕	63
CQ .....	12 poles + ⊕	62

overall dimensions:  
21 x 21 mm

hoods



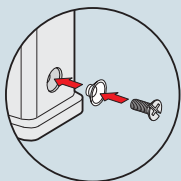
covers



description	part No. (entry - Pg 11)	part No. (entry - M 20)	part No.
with pegs, top entry <sup>1)</sup>	<b>CK 03 VS</b> (white)	<b>MK V20</b> (white)	
with pegs, top entry <sup>1)</sup>	<b>CK 03 VNS</b> (black)	<b>MK VN20</b> (black)	
with pegs, side entry <sup>1)</sup>	<b>CK 03 VAS</b> (white)	<b>MK VA20</b> (white)	
with pegs, side entry <sup>1)</sup>	<b>CK 03 VANS</b> (black)	<b>MK VAN20</b> (black)	
with lever, top entry <sup>1)</sup>	<b>CK 03 VGS</b> (white)	<b>MK VG20</b> (white)	
with lever, top entry <sup>1)</sup>	<b>CK 03 VGNS</b> (black)	<b>MK VGN20</b> (black)	
with pegs and gasket, for female inserts			<b>CK 03 C</b> (white)
with pegs and gasket, for female inserts			<b>CK 03 CN</b> (black)
with pegs, for male inserts			<b>CK 03 CA</b> (white)
with pegs, for male inserts			<b>CK 03 CAN</b> (black)
with lever and gasket, for female inserts			<b>CK 03 CX</b> (white)
with lever and gasket, for female inserts			<b>CK 03 CXN</b> (black)
with lever, for male inserts			<b>CK 03 CXA</b> (white)
with lever, for male inserts			<b>CK 03 CXAN</b> (black)
seal and screw kit for IP66/IP67 <sup>2)</sup> for CK, CQ 05, CKS inserts	<b>CKR 65</b>		
seal and screw kit for IP66/IP67 <sup>2)</sup> for CD 07/08 inserts	<b>CKR 65 D</b>		

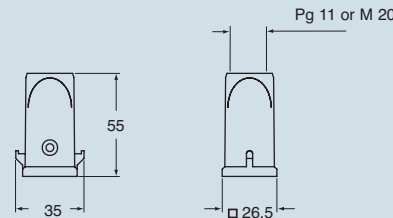
- 1) enclosures with IP44 degree of protection, obtained by the elimination of the flexible washer normal supplied with the insert
- 2) To achieve the IP66/IP67 protection rating, a kit is available which includes a seal to be fitted under the insert fastening screw supplied with the kit (see example illustrated), instead of the screw with spring washer supplied with the insert

**Note:**  
The CQ 12 inserts are already fitted with seal and screw, allowing IP66/IP67 protection rating to be achieved.

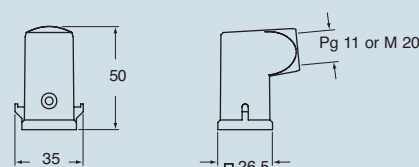


dimensions in mm

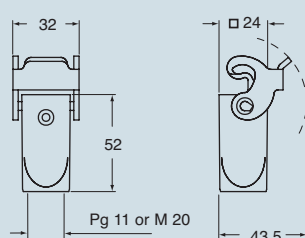
**CK V(N)S and MK V(N)**



**CK VA(N)S and MK VA(N)**

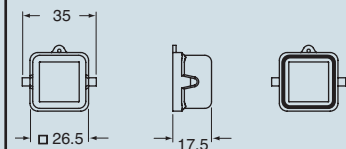


**CK VG(N)S and MK VG(N)**

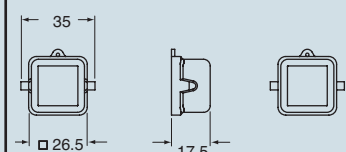


dimensions in mm

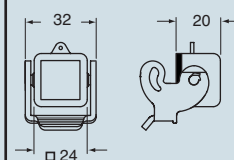
**CK C(N)**



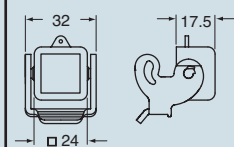
**CK CA(N)**



**CK CX(N)**



**CK CXA(N)**



**CRUS**® Type 12  
Type 4/4X only  
with CKR 65 (D)

dimensions indicated are not binding  
and may be changed without notice



inserts:		page
CK	3 poles + ⊕	36
CK	4 poles + ⊕	36
CKS	3 poles + ⊕	37
CKS	4 poles + ⊕	37
CD	8 poles	40
CQ	5 poles + ⊕	63
CQ	12 poles + ⊕	62

overall dimensions:  
21 x 21 mm

bulkhead housings

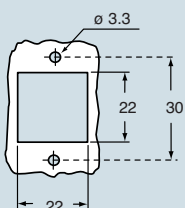


angled bulkhead housings



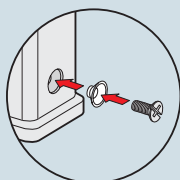
description	part No.	part No. (entry - Pg 11)	part No. (entry - M 20)
with lever in galvanised steel <sup>1)</sup> with stainless steel lever <sup>1)</sup>	<b>CKA 03 I</b> <b>CKAX 03 I</b>		
without cable gland outlet, lever in galvanised steel <sup>1)</sup> without cable gland outlet, stainless steel lever <sup>1)</sup>		<b>CKA 03 IA</b> <b>CKAX 03 IA</b>	
with threaded entry, lever in galvanised steel <sup>1)</sup> with threaded entry, stainless steel lever <sup>1)</sup> with threaded entry, lever in galvanised steel <sup>1)</sup> , bottom closed with threaded entry, stainless steel lever <sup>1)</sup> , bottom closed		<b>CKA 03 IAPS</b> <b>CKAX 03 IAPS</b> <b>CKA 03 APS</b> <b>CKAX 03 APS</b>	<b>MKA IAP20</b> <b>MKAX IAP20</b> <b>MKA AP20</b> <b>MKAX AP20</b>
seal and screw kit for IP66/IP67 <sup>2)</sup> for CK, CQ 05, CKS inserts	<b>CKR 65</b>	<b>CKR 65</b>	
seal and screw kit for IP66/IP67 <sup>2)</sup> for CD 07/08 inserts	<b>CKR 65 D</b>	<b>CKR 65 D</b>	

panel cut-out for enclosures, in mm



- 1) enclosures with IP44 degree of protection.
- 2) To achieve the IP66/IP67 protection rating, a kit is available which includes a seal to be fitted under the insert fastening screw supplied with the kit (see example illustrated), instead of the screw with spring washer supplied with the insert

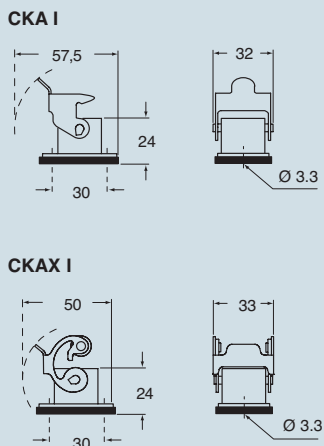
**Note:**  
The CQ 12 inserts are already fitted with seal and screw, allowing IP66/IP67 protection rating to be achieved.



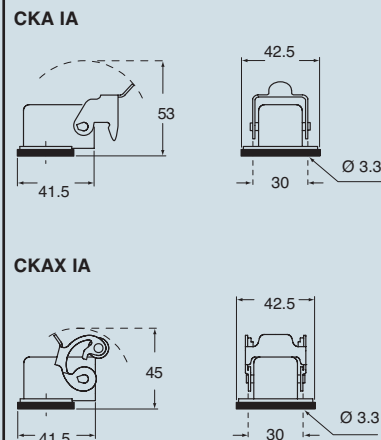
**CRUS**® Type 12  
Type 4/4X only  
with CKR 65 (D)

dimensions indicated are not binding  
and may be changed without notice

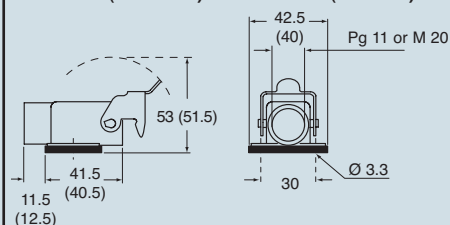
dimensions in mm



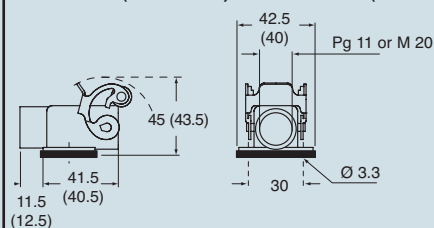
dimensions in mm



**CKA IAPS (CKA APS) and MKA IAP (MKA AP)**



**CKAX IAPS (CKAX APS) and MKAX IAP (MKAX AP)**



size 21.21



inserts:		page
CK	3 poles + ⊕	36
CK	4 poles + ⊕	36
CKS	3 poles + ⊕	37
CKS	4 poles + ⊕	37
CD	8 poles	40
CQ	5 poles + ⊕	63
CQ	12 poles + ⊕	62

overall dimensions:  
21 x 21 mm

hoods



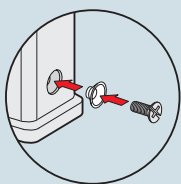
covers



description	part No. (entry - Pg 11)	part No. (entry - M 20)	part No.
with pegs, top entry <sup>1)</sup>	<b>CKA 03 VS</b>	<b>MKA V20</b>	
with pegs, side entry <sup>1)</sup>	<b>CKA 03 VAS</b>	<b>MKA VA20</b>	
with lever in galvanised steel, top entry <sup>1)</sup>	<b>CKA 03 VGS</b>	<b>MKA VG20</b>	
with stainless steel lever, top entry <sup>1)</sup>	<b>CKAX 03 VGS</b>	<b>MKAX VG20</b>	
with pegs and gasket, for female inserts			<b>CKA 03 C <sup>2)</sup></b>
with pegs, for male inserts			<b>CKA 03 CA <sup>2)</sup></b>
with stainless steel lever and gasket, for female inserts			<b>CKAX 03 CX</b>
with stainless steel lever, for male inserts			<b>CKAX 03 CXA</b>
seal and screw kit for IP66/IP67 <sup>3)</sup> for CK, CQ 05, CKS inserts	<b>CKR 65</b>		
seal and screw kit for IP66/IP67 <sup>3)</sup> for CD 08 inserts	<b>CKR 65 D</b>		

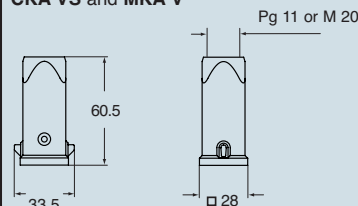
- 1) enclosures with IP44 degree of protection.
- 2) better to use with CKAX enclosures (stainless steel lever).
- 3) To achieve the IP66/PI67 protection rating, a kit is available which includes a seal to be fitted under the insert fastening screw supplied with the kit (see example illustrated), instead of the screw with spring washer supplied with the insert

**Note:**  
The CQ 12 inserts are already fitted with seal and screw, allowing IP66/IP67 protection rating to be achieved.

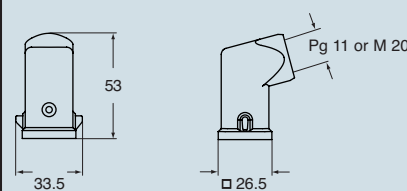


dimensions in mm

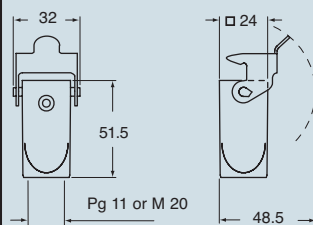
**CKA VS and MKA V**



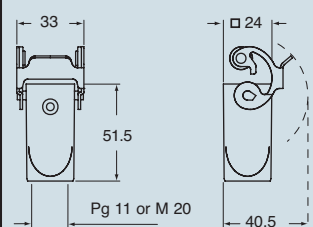
**CKA VAS and MKA VA**



**CKA VGS and MKA VG**

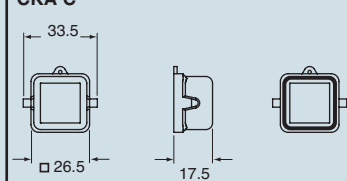


**CKAX VGS and MKAX VG**

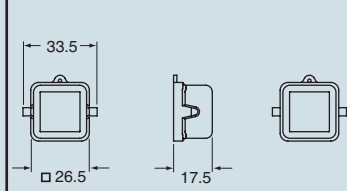


dimensions in mm

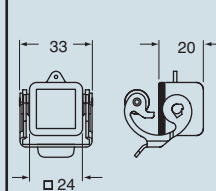
**CKA C**



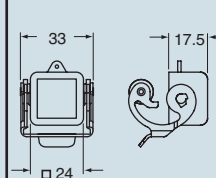
**CKA CA**



**CKAX CX**



**CKAX CXA**



dimensions indicated are not binding and may be changed without notice

size 21.21

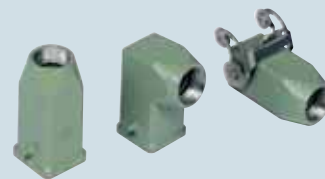
inserts:		page
CK .....	3 poles + ⊕	36
CK .....	4 poles + ⊕	36
CKS .....	3 poles + ⊕	37
CKS .....	4 poles + ⊕	37
CD .....	8 poles	40
CQ .....	5 poles + ⊕	63
CQ .....	12 poles + ⊕	62

overall dimensions:  
21 x 21 mm

**bulkhead housings  
straight and angled**

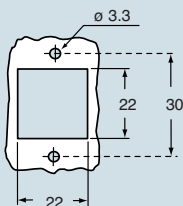


**hoods**



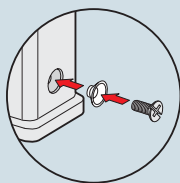
description	part No. (entry - Pg 11)	part No. (entry - M 20)	part No. (entry - Pg 11)	part No. (entry - M 20)
with stainless steel lever <sup>1)</sup>	<b>CKAXW 03 I</b>			
without cable gland outlet, stainless steel lever <sup>1)</sup>	<b>CKAXW 03 IA</b>			
with threaded entry, stainless steel lever <sup>1)</sup>	<b>CKAXW 03 IAP</b>	<b>MKAXW IAP20</b>		
with threaded entry, stainless steel lever <sup>1)</sup> , bottom closed	<b>CKAXW 03 AP</b>	<b>MKAXW AP20</b>		
with pegs, top entry <sup>1)</sup>			<b>CKAW 03 V</b>	<b>MKAW V20</b>
with pegs, side entry <sup>1)</sup>			<b>CKAW 03 VA</b>	<b>MKAW VA20</b>
with stainless steel lever, top entry <sup>1)</sup>			<b>CKAXW 03 VG</b>	<b>MKAXW VG20</b>
seal and screw kit for IP66/IP67 <sup>2)</sup> for CK, CQ 05, CKS inserts	<b>CKR 65</b>		<b>CKR 65</b>	
seal and screw kit for IP66/IP67 <sup>2)</sup> for CD 08 inserts	<b>CKR 65 D</b>		<b>CKR 65 D</b>	

panel cut-out for enclosures, in mm



- 1) enclosures with IP44 degree of protection.
- 2) To achieve the IP66/IP67 protection rating, a kit is available which includes a seal to be fitted under the insert fastening screw supplied with the kit (see example illustrated), instead of the screw with spring washer supplied with the insert

**Note:**  
The CQ 12 inserts are already fitted with seal and screw, allowing IP66/IP67 protection rating to be achieved.

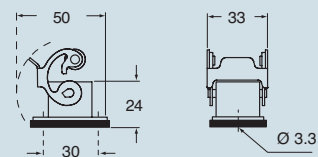


**CRUS**® Type 12  
Type 4/4X only  
with CKR 65 (D)

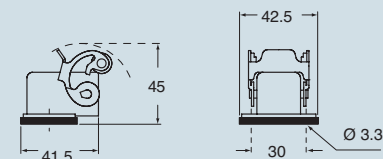
dimensions indicated are not binding  
and may be changed without notice

dimensions in mm

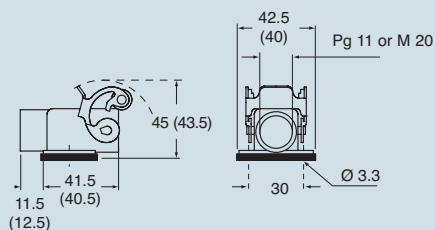
**CKAXW I**



**CKAXW IA**

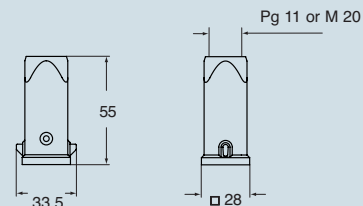


**CKAXW IAP (CKAXW AP) and  
MKAXW IAP (MKAXW AP)**

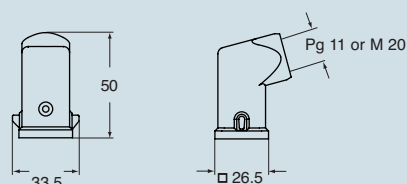


dimensions in mm

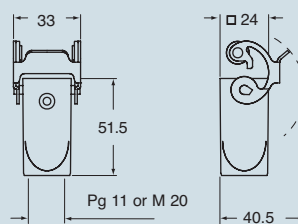
**CKAW V and MKAW V**



**CKAW VA and MKAW VA**



**CKAXW VG and MKAXW VG**



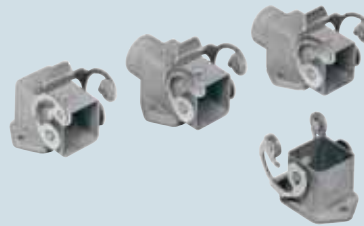
size 21.21



inserts:		page
CK	3 poles + ⊕	36
CK	4 poles + ⊕	36
CKS	3 poles + ⊕	37
CKS	4 poles + ⊕	37
CD	8 poles	40
CQ	5 poles + ⊕	63
CQ	12 poles + ⊕	62

overall dimensions:  
21 x 21 mm

**bulkhead housings  
straight and angled**

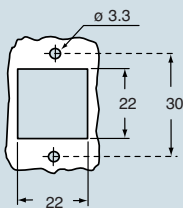


**hoods**



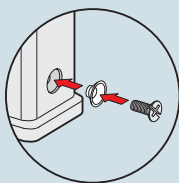
description	part No. (entry - Pg 11)	part No. (entry - M 20)	part No. (entry - Pg 11)	part No. (entry - M 20)
with stainless steel lever <sup>1)</sup>	<b>CKAXS 03 I</b>			
without cable gland outlet, stainless steel lever <sup>1)</sup>	<b>CKAXS 03 IA</b>			
with threaded entry, stainless steel lever <sup>1)</sup>	<b>CKAXS 03 IAP</b>	<b>MKAXS IAP20</b>		
with threaded entry, stainless steel lever <sup>1)</sup> , bottom closed	<b>CKAXS 03 AP</b>	<b>MKAXS AP20</b>		
with pegs, top entry <sup>1)</sup>			<b>CKAS 03 V</b>	<b>MKAS V20</b>
with pegs, side entry <sup>1)</sup>			<b>CKAS 03 VA</b>	<b>MKAS VA20</b>
with stainless steel lever, top entry <sup>1)</sup>			<b>CKAXS 03 VG</b>	<b>MKAXS VG20</b>
seal and screw kit for IP66/IP67 <sup>2)</sup> for CK, CQ 05, CKS inserts	<b>CKR 65</b>		<b>CKR 65</b>	
seal and screw kit for IP66/IP67 <sup>2)</sup> for CD 08 inserts	<b>CKR 65 D</b>		<b>CKR 65 D</b>	

panel cut-out for enclosures, in mm



- enclosures with IP44 degree of protection.
- To achieve the IP66/IP67 protection rating, a kit is available which includes a seal to be fitted under the insert fastening screw supplied with the kit (see example illustrated), instead of the screw with spring washer supplied with the insert

**Note:**  
The CQ 12 inserts are already fitted with seal and screw, allowing IP66/IP67 protection rating to be achieved.

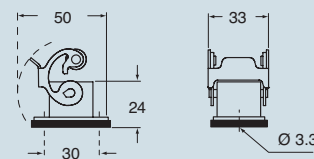


**CEC®** Type 12  
Type 4/4X only  
with CKR 65 (D)

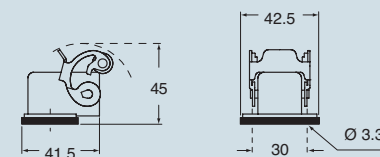
dimensions indicated are not binding  
and may be changed without notice

dimensions in mm

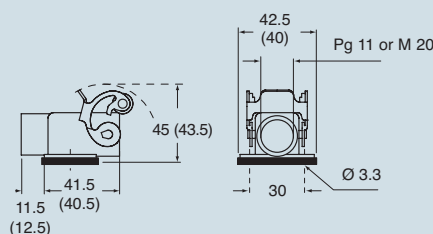
**CKAXS I**



**CKAXS IA**

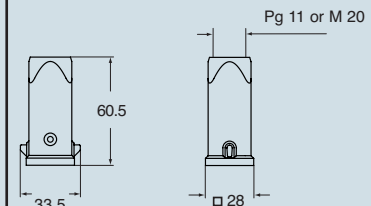


**CKAXS IAP (CKAXS AP) and  
MKAXS IAP (MKAXS AP)**

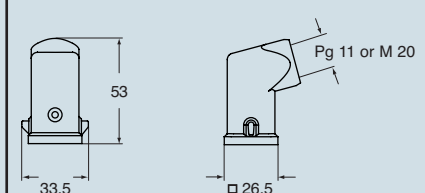


dimensions in mm

**CKAS V and MKAS V**



**CKAS VA and MKAS VA**



**CKAXS VG and MKAXS VG**

