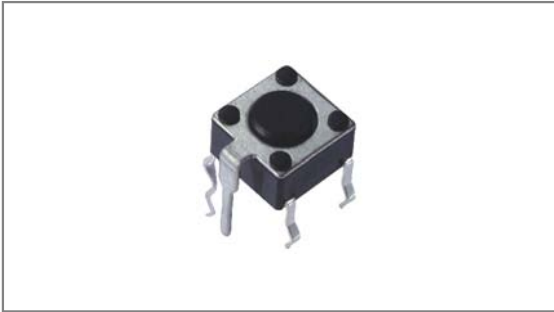


# Tact switches 6×6

**INT-1102BG Series** 6×6mm, Through hole type with Ground pin

- TACT Switches
- PUSH Switches
- HOOK Switches
- DETECTOR Switches
- SLIDE Switches
- ROTARY Potentiometers
- LEVER Switches
- ROTARY Switches
- CAPS



- ▶ **Features** : Broad of stem length & Suitable for variety of controls
- ▶ **Applications** : Operating switches for all kinds of electronic equipments
- ▶ **Specifications** :

Rating	DC 12V 50mA
Contact resistance	100mΩ Max.
Travel (mm)	0.25+0.2/-0.1

▶ **Part list**

Part No.		Length (mm)	Operating force		Life	QTY per pack (Plastic bag)
			A	B		
INT-1102BG43A	INT-1102BG43B	4.3	160±50gf	250±50gf	100,000 Cycles Min.	2K
INT-1102BG50A	INT-1102BG50B	5.0				
INT-1102BG60A	INT-1102BG60B	6.5				
INT-1102BG70A	INT-1102BG70B	7.0				
INT-1102BG73A	INT-1102BG73B	7.3				
INT-1102BG75A	INT-1102BG75B	7.5				
INT-1102BG80A	INT-1102BG80B	8.0				
INT-1102BG85A	INT-1102BG85B	8.5				
INT-1102BG95A	INT-1102BG95B	9.5				
INT-1102BG12A	INT-1102BG12B	12.0				
INT-1102BG125A	INT-1102BG125B	12.5				
INT-1102BG13A	INT-1102BG13B	13.0				
INT-1102BG135A	INT-1102BG135B	13.5				
INT-1102BG162A	INT-1102BG162B	16.2				
INT-1102BG17A	INT-1102BG17B	17.0				

\* Long life (1KK cycles) is available and part numbers in long life change to INT-1102BG43AL ~ INT-1102BG17AL.

▶ **Drawing**

**Circuit diagram**

**PCB Dimension**