

4120 (JQC-4)



Dust Covered
26.8×21.5×22.3



Open Type
24×19×20

Features

- Small size, heavy contact load, capable of standing strong current of 45A at 14VDC.
- PC board mounting.
- Suitable for automatic control facilities and automobile application etc.
- Both European 11mm pole distance and American 8mm pole distance available.

Ordering Information

4120 C S 30 DC12V 1.6 U
 1 2 3 4 5 6 7

- | | |
|--|--|
| 1 Part number: 4120 (JQC-4) | 4 Contact current: 30:30A; 45:45A |
| 2 Contact arrangement: A:1A; B:1B; C:1C | 5 Coil rated voltage(V): DC:6,9,12,18,24 |
| 3 Enclosure: S: Sealed type; Z: Dust cover
O: Open type | 6 Coil power consumption: 1.6:1.6W; 1.9:1.9W |
| | 7 Terminal distance type:U:USA; E:European |

Contact Data

Contact Arrangement	1A (SPSTNO) 1B (SPSTNC) 1C (SPDT(B-M))	
Contact Material	AgNi AgSnO ₂ AgCdO	
Contact Rating (resistive)	1A: 45A/14VDC;1B:30A/14VDC; 1C:30A/120VAC,14VDC, 15A/28VDC;NO:40A/14VDC;NC:30A/14VDC;	
Max. Switching Power	630W 3600VA	
Max. Switching Voltage	75VDC 380VAC	Max. Switching Current:45A
Contact Resistance or Voltage drop	≤30mΩ	Item 4.12 of IEC 61810-7
Operation life	Electrical	10 ⁵ Item 4.30 of IEC 61810-7
	Mechanical	10 ⁷ Item 4.31 of IEC 61810-7

- CAUTION:** 1.For the intermediate current, it only applies to the room temperature.
 2.For the open type relays, the min. switching current and min. switching voltage is 100mA/6VDC.

Coil Parameter

Dash numbers	Coil voltage VDC		Coil resistance Ω ± 10%	Pickup voltage VDC(max) (70%of rated voltage)	Release voltage VDC(min) (10% of rated voltage)	Coil power consumption W	Operate Time ms	Release Time ms
	Rated	Max.						
006-1900	6	7.8	19	4.20	0.6	1.9	≤5	≤3
009-1900	9	11.7	42.6	6.30	0.9			
012-1600	12	15.6	90	8.40	1.2	1.6	≤5	≤3
018-1600	18	23.4	202.5	12.6	1.8			
024-1600	24	31.2	360	16.8	2.4			

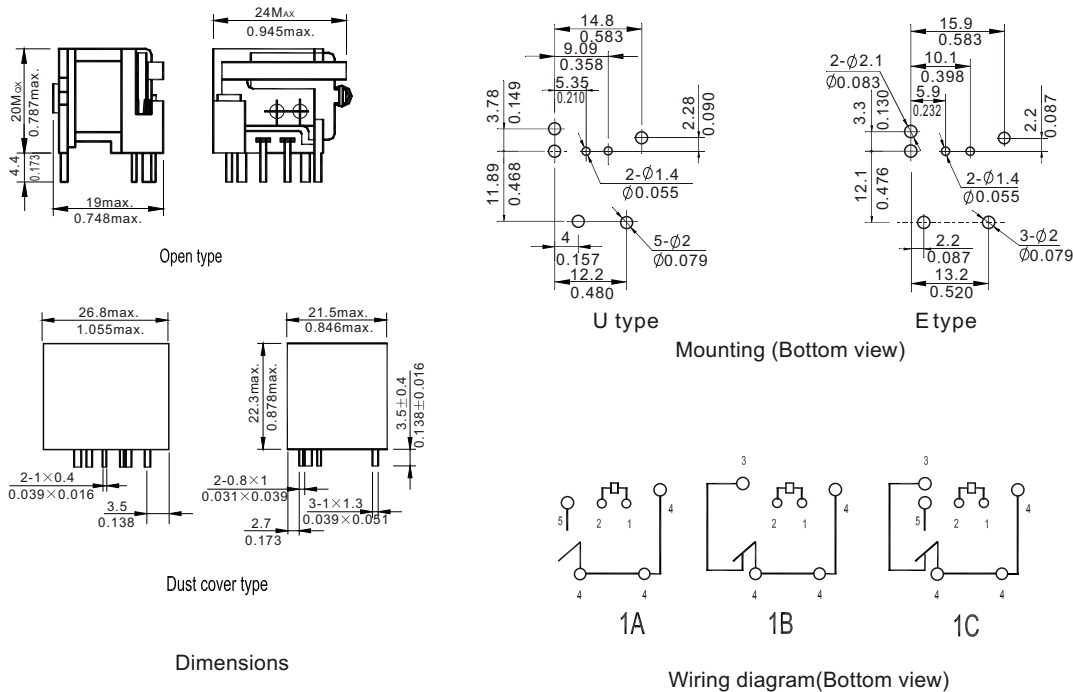
- CAUTION:** 1.The use of any coil voltage less than the rated coil voltage will compromise the operation of the relay.
 2.Pickup and release voltage are for test purposes only and are not to be used as design criteria.

Operation condition

Insulation Resistance	100M Ω min (at 500VDC)	Item 7 of IEC 60255-5
Dielectric Strength Between contacts Between contact and coil	50Hz 500V 50Hz 750V	Item 6 of IEC 60255-5 Item 6 of IEC 60255-5
Shock resistance	200m/s ² 11ms	IEC 68-2-27 Test Ea
Vibration resistance	10Hz~40Hz double amplitude 1.27mm	IEC 68-2-6 Test Fc
Terminals strength	10N	IEC 68-2-21 Test Ua1
Solderability	260 $\text{C} \pm 5\text{C}$ 5s ± 0.5 s	IEC 68-2-20 Test Ta method 1
Ambient Temperature	-40 $\text{C} \sim 125\text{C}$	
Relative Humidity	85% (at 40 C)	IEC 68-2-3 Test Ca
Mass	19g (Open type) 21g	

Dimensions

mm /inch



NOTES 1).Dimensions are in millimeters.
2).Inch equivalents are given for general information only.

Reference Data

