

## WiFi Antenna

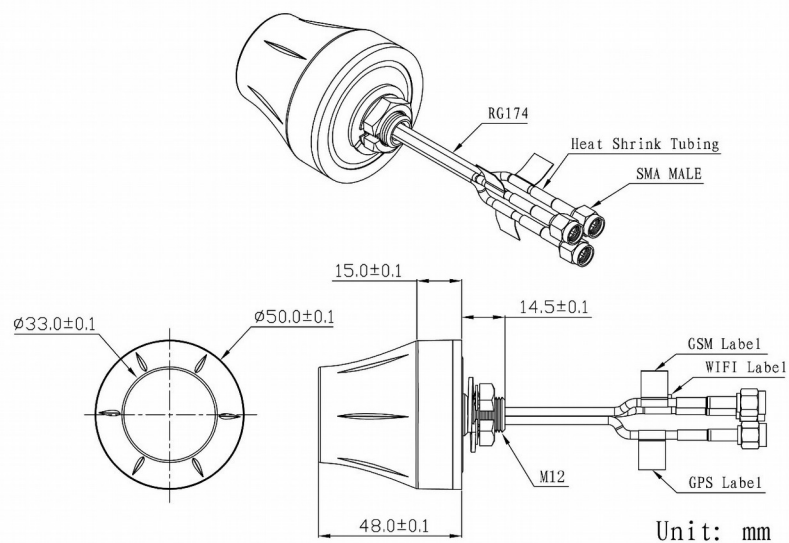
Model : GGW-ANT058



1 Part Number

**GGW-ANT058**

2 Dimension ( Unit : mm )



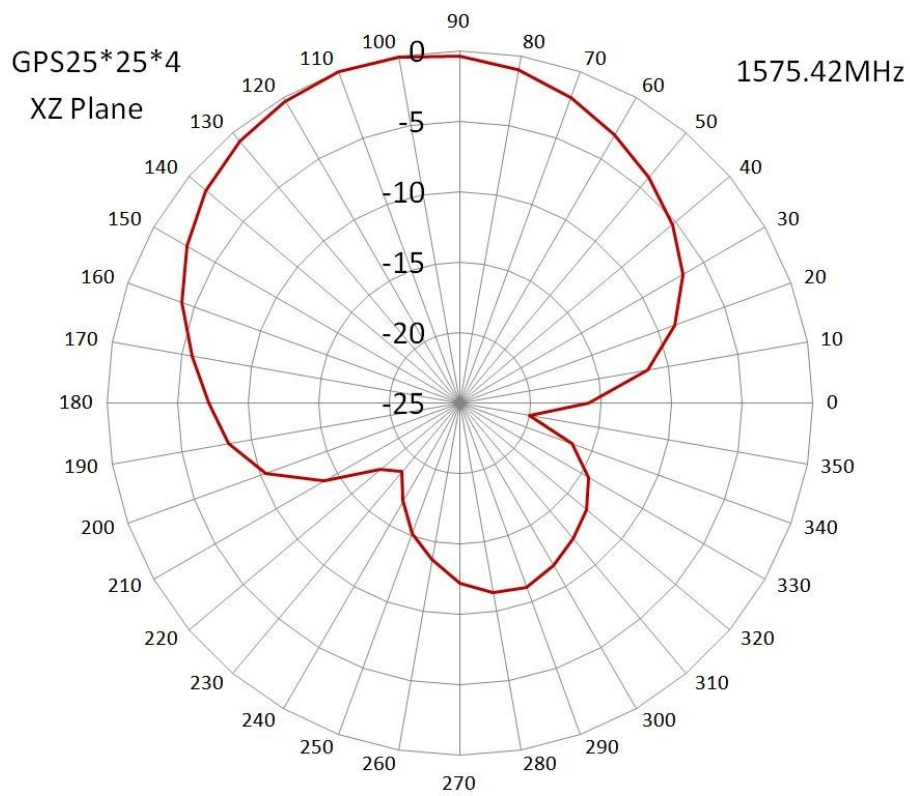
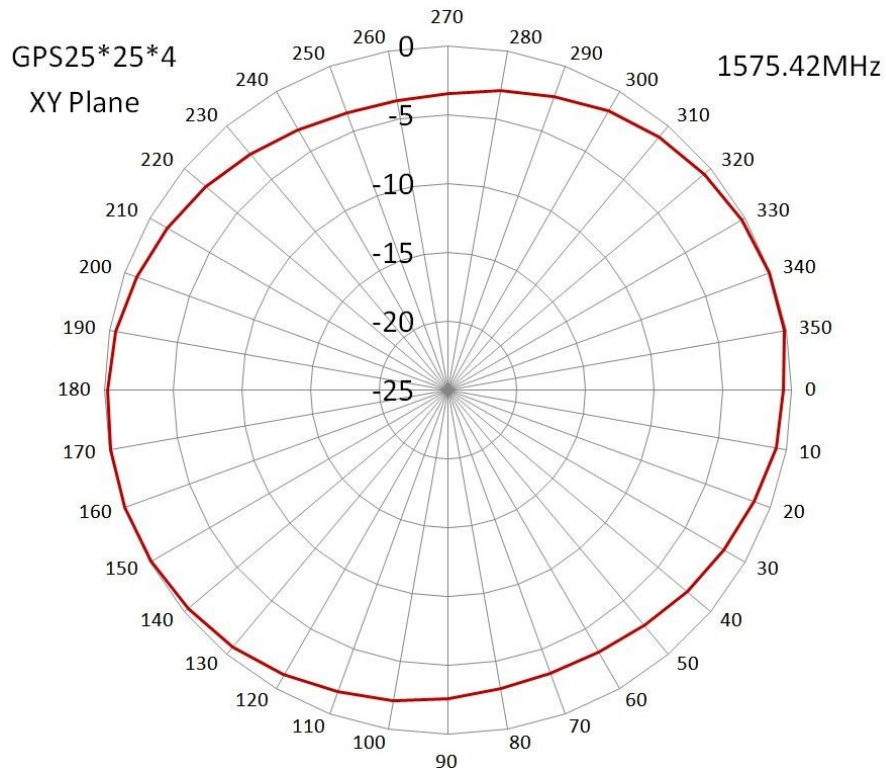
## 3 Electrical Characteristics

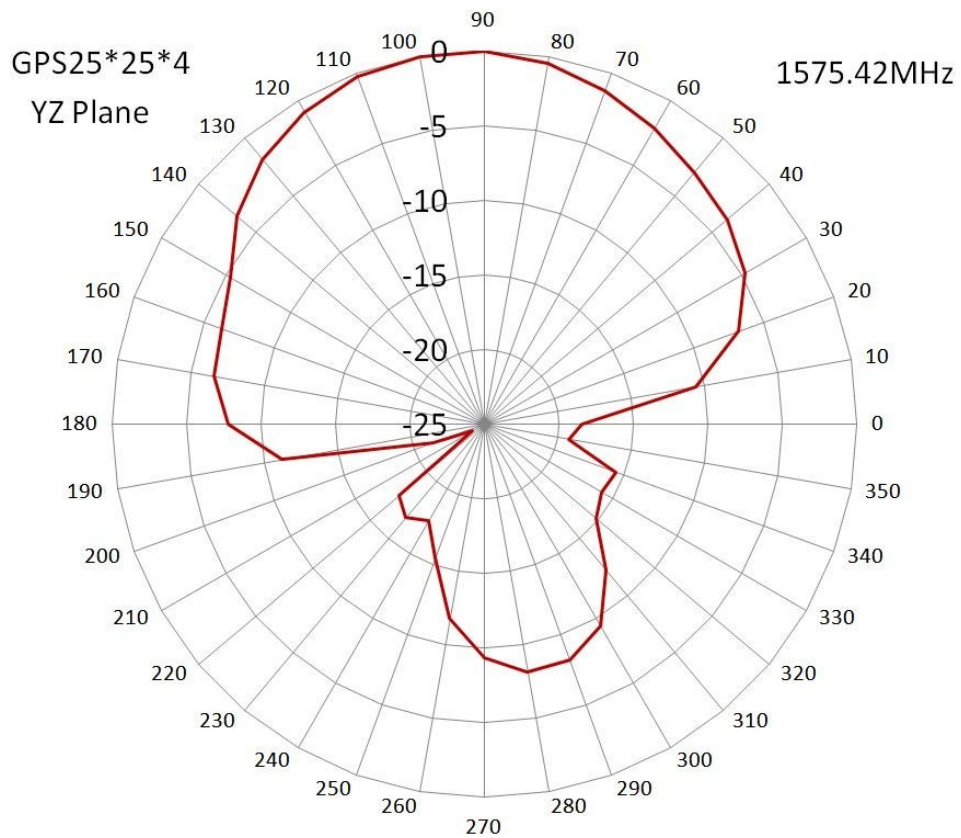
### 3.1 WiFi Antenna

Item		Specifications	
GPS Antenna	Dielectric Antenna	Center Frequency	1575.42±1MHz
		Band Width	CF±5MHz
		Polarization	RHCP
		Gain	2dBic ( Zenith )
		V.S.W.R	< 1.5
		Impedance	50Ω
		Axial Ratio	3dB ( max )
	LNA	Gain	28±2dB
		Noise Figure	< 1.5
		Ex-band Attenuation	12dB@CF+50MHz/16dB@CF-50MHz
		V.S.W.R	< 2.0
Supply Voltage		2.2~5V DC	
Current Consumption	5~15mA		
GSM Antenna		Frequency Range	824~960MHz/1710~2170MHz
		V.S.W.R	< 2.0
		Polarization	Linear
		Gain	2.0dBi
		Impedance	50Ω
WIFI Antenna		Frequency Range	2400~2483.5MHz
		Band Width	83.5MHz
		Polarization	Linear
		Gain	3dBi
		V.S.W.R	< 2.0
		Impedance	50Ω
Mechanical		Cable	RG174
		Connector	SMA/MCX/FAKRA or others
		Material	ABS
		Mounting Method	Screw
Environmental		Operating Temperature	-40°C~+85°C
		Relative Humidity	Up to 95%
		Ingress Protection	IP67 (exclude cable outlet)
		Vibration	10 to 55Hz with 1.5mm amplitude 2hours

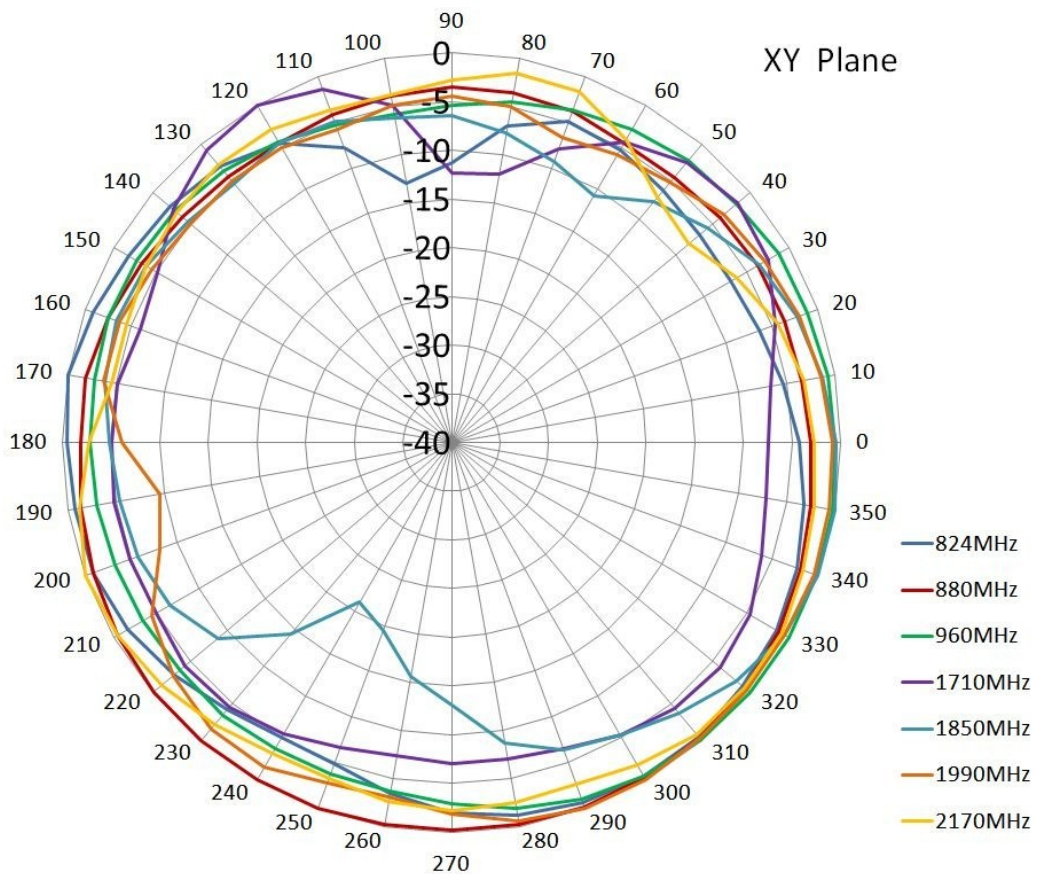
## 4 Radiation Pattern

### GPS Antenna

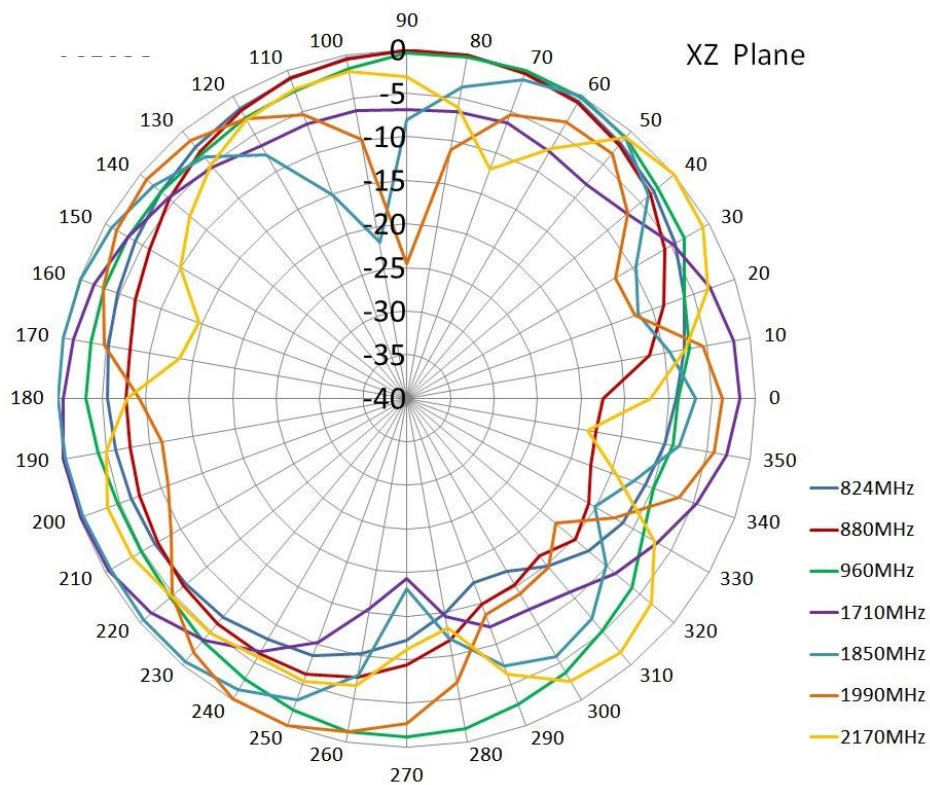
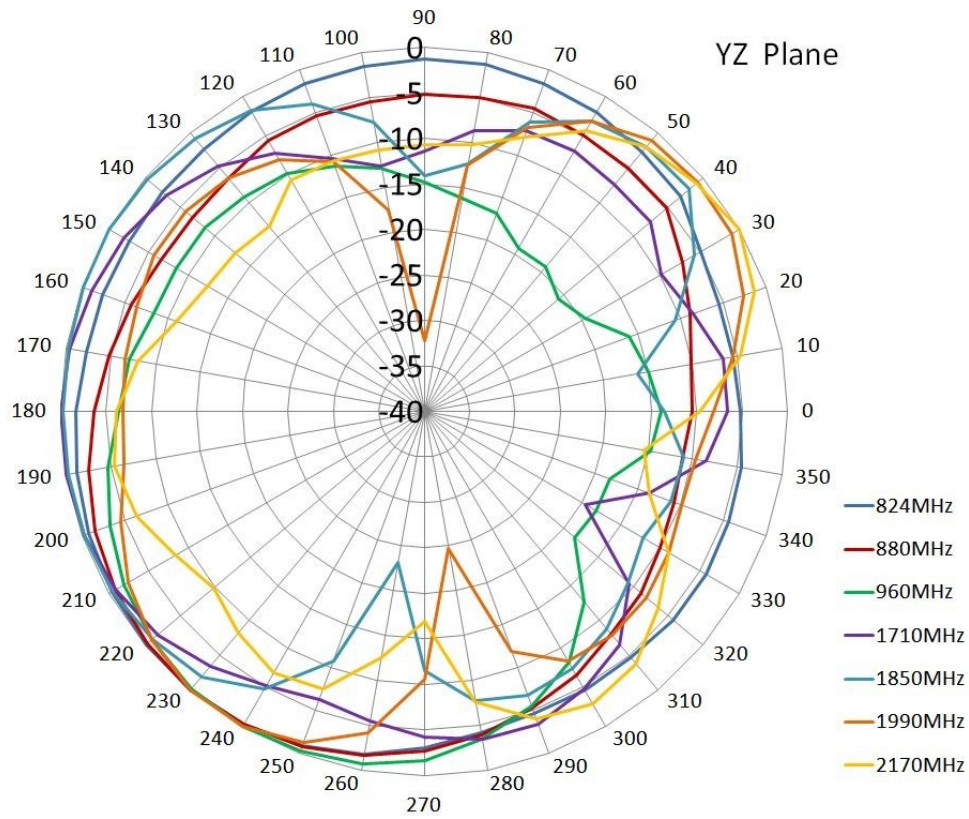




## GSM Antenna







## WIFI Antenna

