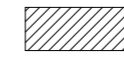
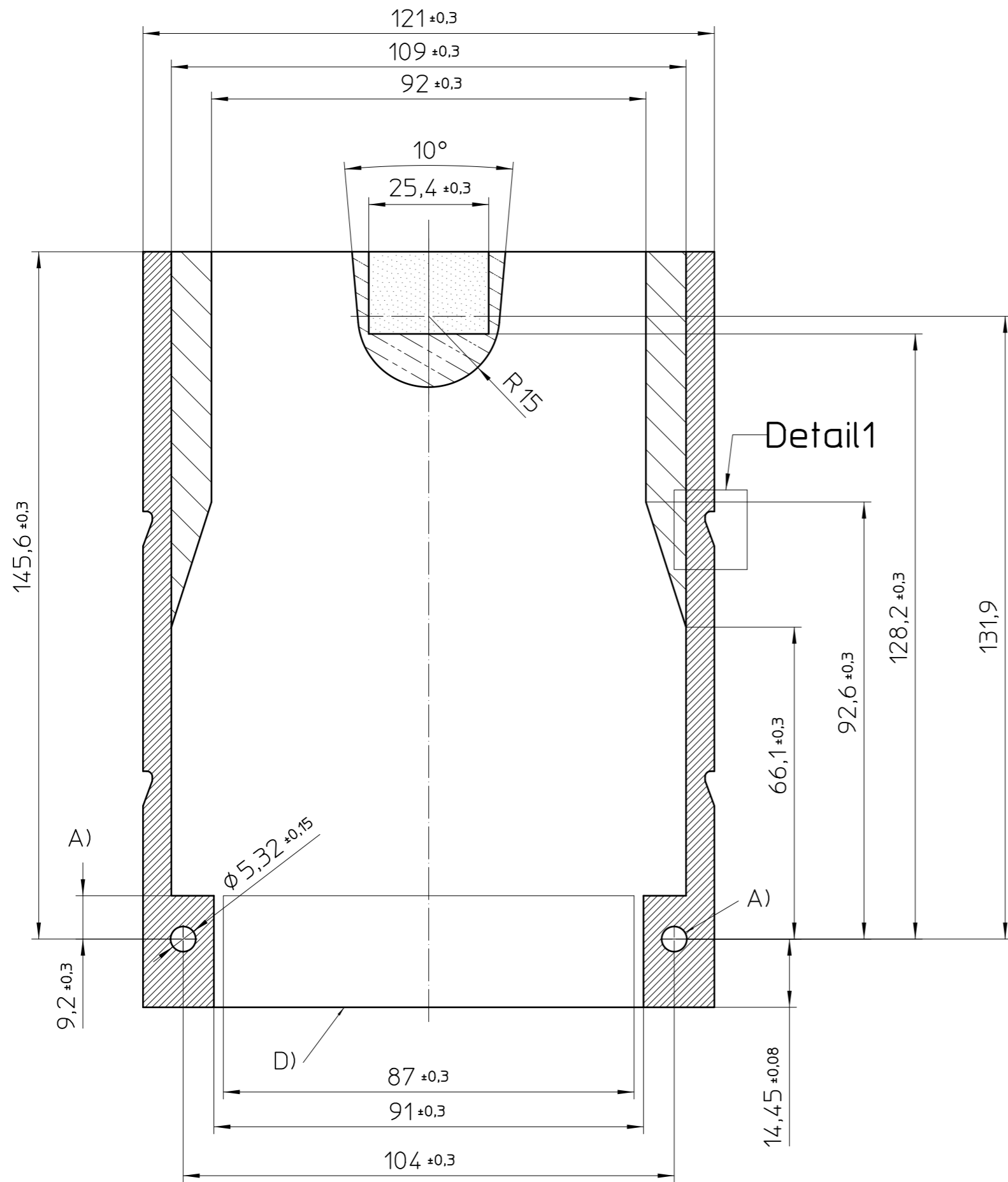
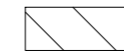


Transfer or duplication of this document as well as the utilisation or communication of its content are not permitted unless express consent is granted. Violations give rise to claims for damages. All rights reserved in case of patent, utility model or design patent registrations.

Weitergabe sowie Vervielfältigung dieses Dokuments, Verwertung und Mitteilung seines Inhalts sind verboten, soweit nicht ausdrücklich gestattet. Zuwiderhandlungen verpflichten zu Schadenersatz. Alle Rechte für den Fall der Patent-, Gebrauchsmuster- oder Designeintragung vorbehalten.



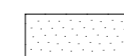
COMPONENT / TRACE KEEP OUT ZONE



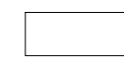
MAX COMPONENT HEIGHT ABOVE PCB = 12.5  
MAX COMPONENT HEIGHT BELOW PCB = 7.5



MAX COMPONENT HEIGHT ABOVE PCB = 30.5  
MAX COMPONENT HEIGHT BELOW PCB = 3.5



MAX COMPONENT HEIGHT ABOVE PCB = 30.5  
MAX COMPONENT HEIGHT BELOW PCB = NO TRACE / COMPONENTS



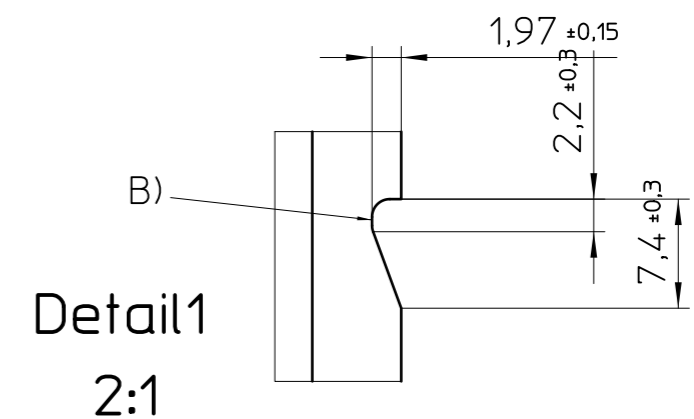
MAX COMPONENT HEIGHT ABOVE PCB = 29.5  
MAX COMPONENT HEIGHT BELOW PCB = 9.5

GENERAL INFORMATION

- SIMPLIFIED REPRESENTATION
- DOCUMENT EXCLUDED FROM CHANGE PROCESS
- LINEAR DIMENSIONS (MM)
- WEB: WWW.PHOENIXCONTACT.COM WEBCODE: #0857

ADDITIONAL INFORMATION:

- A) PCB MOUNTING HARDWARE HOLE
- B) OPTIONAL CUTOUT FOR ECS-BL (LOCATION & QUANTITY BY CUSTOMER)
- C) PCB THICKNESS = 1.57 MM (.062")
- D) AREA FOR FACEPLATE PCB CONNECTIONS



	document-No. / RI	date	scale
	01048830 / 02	19.01.2026	1:1
	ident.-No.	document-type	
	2230003	TECDC 2D_PCB-Outline	
page 1 of 1	description		
	ECS-B-122X169-S-UV1-NV		