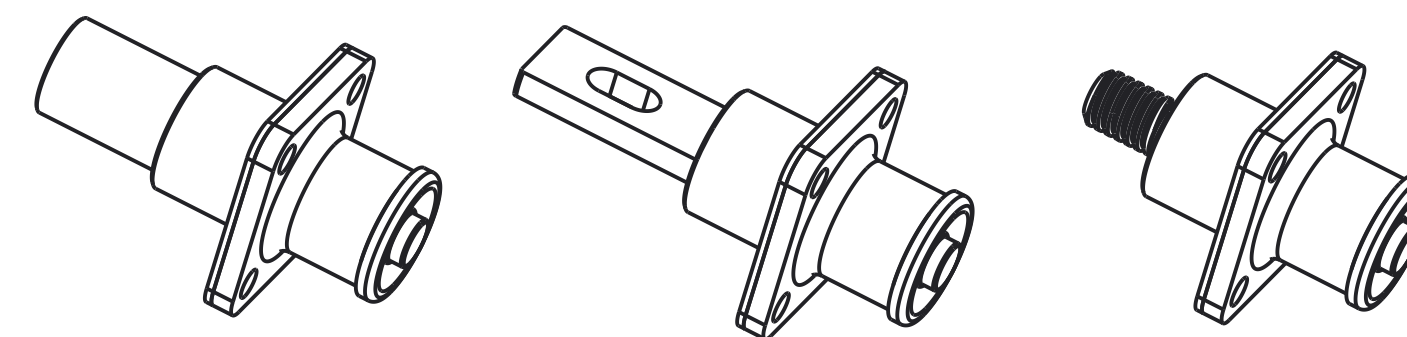
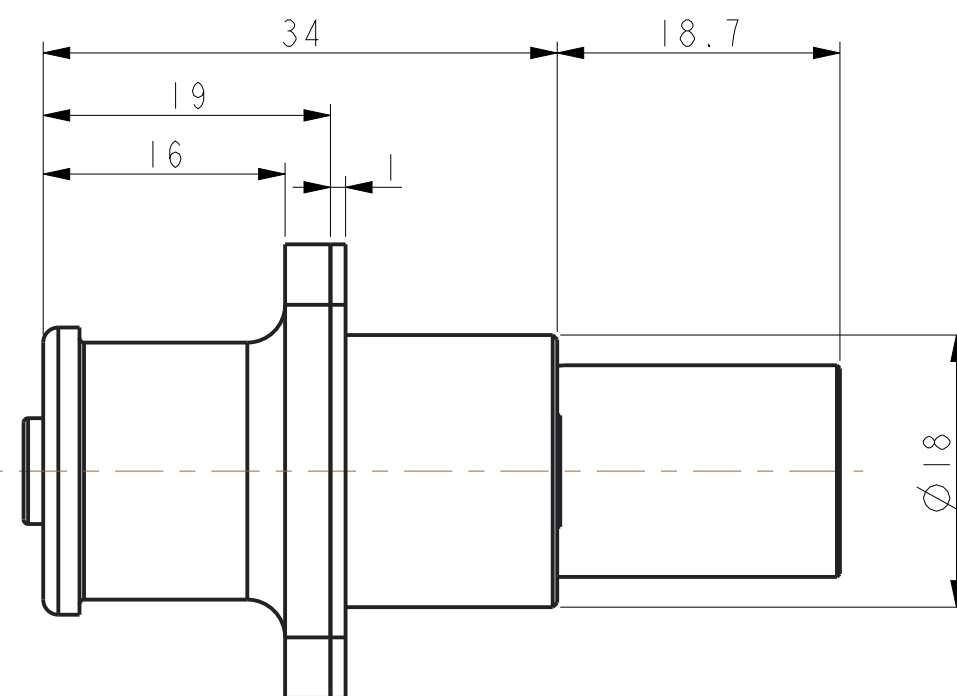
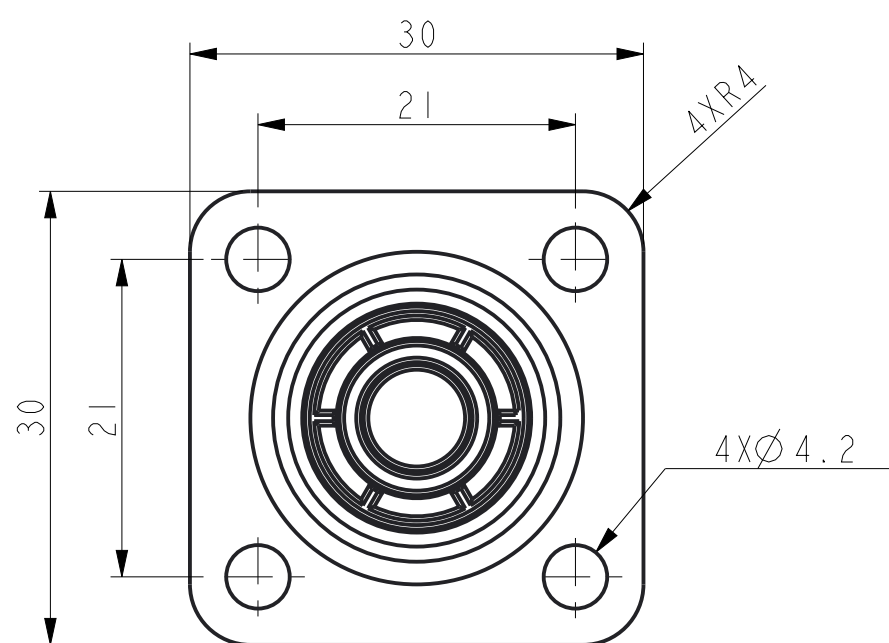


REV. E	SHEET 1 OF 1	DOCUMENT NO. 10-730189-() ()-6810E7-01
REVISIONS		
REV	DESCRIPTION	DATE
C	MODIFY DIMENSION ADD CODE NUMBER	2016-03-18
D	ADD CODE NUMBER ADD DIMENSION	2016-06-01
E	UPDATE CURRENT & TEMP. RATING	2016-11-12

GENERAL TOLERANCE					
DIM. RANGE	0.5 - 3	> 3 - 6	> 6 - 30	> 30 - 120	> 120 - 400
TOLERANCE	±0.1	±0.1	±0.2	±0.3	±0.5

CUSTOMER DRAWING

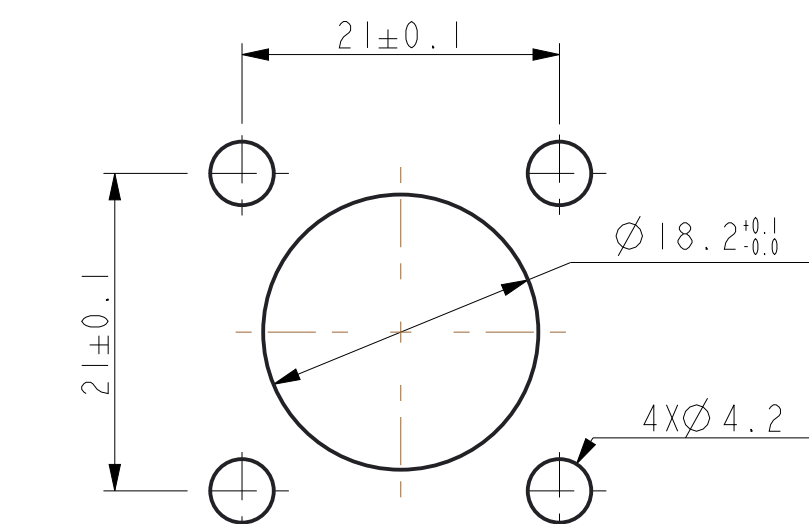


MFG PART NUMBER: C10-730189-() () ()

BASE NUMBER
COLOR, SEE TABLE
PIN TYPE, SEE TABLE
SEALING, SEE TABLE

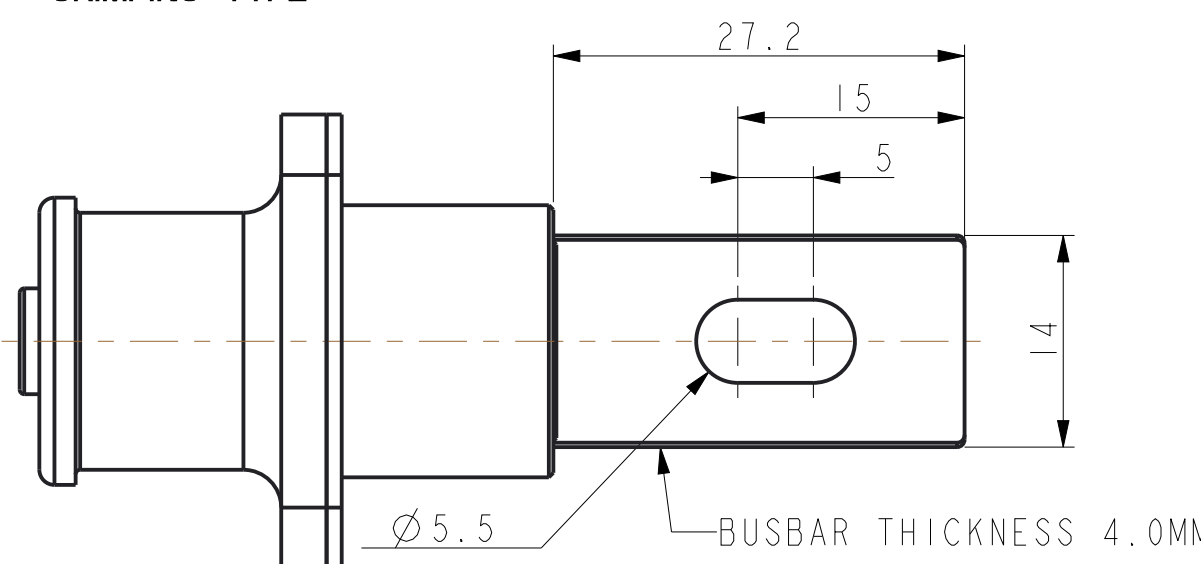
CODE NUMBER REFERENCE: SLPRB () P () ()

BASE NUMBER
PIN TYPE, SEE TABLE
PANEL MOUNT
SEALING, SEE TABLE
COLOR, SEE TABLE



RECOMMENDED PANEL CUT OUT

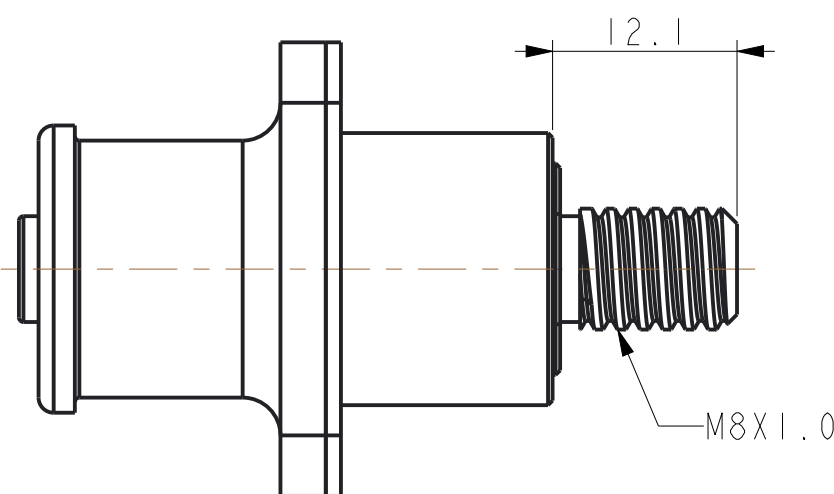
CRIMPING TYPE



BUSBAR TYPE

ITEM	DESCRIPTION	CODE NUMBER	MFG NUMBER
COLOR	ORANGE	O	0
	BLACK	B	1
	RED	R	2
PIN TYPE	50 MM2 CRIMPING	50C	0
	35 MM2 CRIMPING	35C	3
	BUSBAR	B	1
	SCREW	T	2
SEALING	IP67(MATED)	S	0
	NO SEALING	N	1

SPECIFICATIONS	
CURRENT RATING	150A MAX FOR 35MM2 200A MAX FOR 50MM2
OPERATING VOLTAGE	1000V DC
OPERATING TEMPERATURE	-40°C-125°C
CONTACT RESISTANCE	0.3 mΩ



SCREW TYPE

2. IF CHOOSE NO SEALING TYPE, THERE WILL BE NO O-RINGS AND GASKET.

1. THE REFERENCED PRODUCT IS IN COMPLIANCE WITH THE MAXIMUM CONCENTRATION VALUES (MCVS) AS SET BY RoHS 2.0 DIRECTIVE 2011/65/EU AND ANNEX II AMENDMENT DIRECTIVE (EU)2015/863.

NOTES:

THIS DOCUMENT CONTAINS PROPRIETARY INFORMATION AND SUCH INFORMATION MAY NOT BE DISCLOSED TO OTHERS FOR ANY PURPOSE OR USED FOR MANUFACTURING PURPOSES WITHOUT WRITTEN PERMISSION FROM THE AMPHENOL CORP.

N/A	PRO/ENGINEER INFORMATION
NEXT ASSEMBLY	Pro/e Model Used:
METRIC DOCUMENT	Drawing Name:

UNLESS OTHERWISE SPECIFIED		SPECIFICATIONS	POS	QTY	PART NUMBER	DESCRIPTION	NOTE
LINEAR DIMENSIONS ARE IN: MILLIMETERS		MATERIAL SPEC.	APPROVALS		DATE	PARTS LIST	
TOLERANCES: ANGLES= ±2° DEFAULT LINEAR TOLERANCES SEE TABLE		N/A	PREPARED BY	SEVEN XIE	18-Mar-16	AMPHENOL INDUSTRIAL OPERATIONS Amphenol Technology(Zhuhai)Co.,Ltd No.63, Xinghan Road, Sanzao Town, Jinwan, Zhuhai, PRC	
DIM. & TOL. PER ASME Y14.5M-1994; DRM PER MIL-DTL-31000; OTHER AMPHENOL STANDARDS: 9-9318		PROCESS SPEC.	ENGINEER IN CHARGE	SEVEN XIE		R4 8.0MM SURLOK PLUS RECEPTACLE	
LEGENDS: △ = FLAG NOTE CALL OUT REFERENCE ONLY		N/A	DESIGN MANAGER	ROB WENG		SIZE	DOCUMENT NO.
			DESIGN ACTIVITY GROUP	C&I		C	10-730189-()
			THIRD ANGLE PROJECTION			CAGE CODE	REV.
						77820	E
						SCALE: 1.0	SHEET 1 OF 1

DOCUMENT NO. 10-730189-() SHEET 1 OF 1 REV. E

D

C

REV. E

SHEET 1 OF 1

DOCUMENT NO. 10-730189-()

A

FORMAT: C-L-E-Rev-B