

## Han-Modular Compact housing

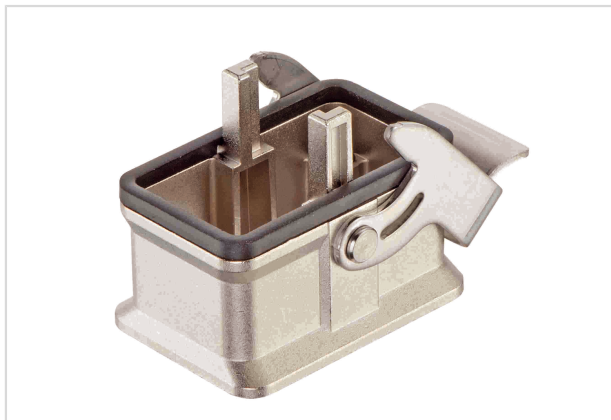


Image is for illustration purposes only. Please refer to product description.

Part number	09 14 001 0301
Specification	Han-Modular Compact housing
HARTING eCatalogue	<a href="https://b2b.harting.com/09140010301">https://b2b.harting.com/09140010301</a>

### Identification

Category	Hoods/Housings
Series of hoods/housings	Han-Modular® Compact
Type of hood/housing	Bulkhead mounted housing

### Version

Size	Modular Compact
Locking type	Single locking lever
Details	<p>Rated voltage <math>\leq 630</math> V</p> <p>Rated impulse voltage <math>\leq 6</math> kV</p> <p>Pollution degree 3</p> <p>For a complete connector the specified voltage rating is the maximum level which can be achieved. In cases where the used module(s) do offer lower voltage ratings, then these lower ratings are valid. Higher voltage ratings in individual applications can be approved in coordination with HARTING.</p>

### Technical characteristics

Stripping length	10 mm PE contact
Tightening torque	1 Nm PE screw
Limiting temperature	-40 ... +125 °C
Mating cycles	$\geq 500$
Degree of protection acc. to IEC 60529	IP65 locked condition

### Material properties

Material (hood/housing)	Zinc die-cast
Surface (hood/housing)	Nickel plated



**Pushing Performance**  
Since 1945

## Material properties

Material (seal)	NBR
Material (locking)	Stainless steel
RoHS	compliant
ELV status	compliant
China RoHS	e
REACH Annex XVII substances	Not contained
REACH ANNEX XIV substances	Not contained
REACH SVHC substances	Not contained
California Proposition 65 substances	Yes
California Proposition 65 substances	Lead
	Nickel
	Naphthalene

## Specifications and approvals

Specifications	IEC 61984
CE	Yes

## Commercial data

Packaging size	1
Net weight	50 g
Country of origin	Germany
European customs tariff number	85389099
eCl@ss	27440202 Shell for industrial connectors