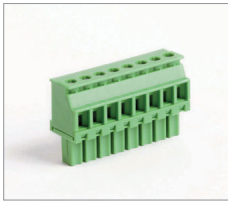


**FEMALE PLUG
RISING CLAMP**
**CONNETTORI FEMMINA
CARRELLO**
**CONNECTEURS FEMELLE
ÉTRIER REMONTANT**
**STECKERTEIL
LIFT-PRINZIP**

MRT22..V01

Single block - Blocco unico
Monobloc - Einzelblock

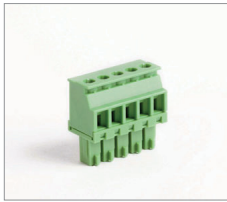
Poles - Poli - Póles - Polzahl 2/20



MRT22

Single block - Blocco unico
Monobloc - Einzelblock

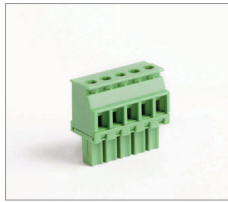
Poles - Poli - Póles - Polzahl 2/10



MRT22..V01

Single block - Blocco unico
Monobloc - Einzelblock

Poles - Poli - Póles - Polzahl 2/10



CUF

Single block - Blocco unico
Monobloc - Einzelblock

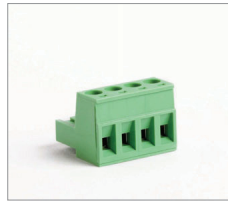
Poles - Poli - Póles - Polzahl 2/36 (5)
2/18 (10)



CPF

Single block - Blocco unico
Monobloc - Einzelblock

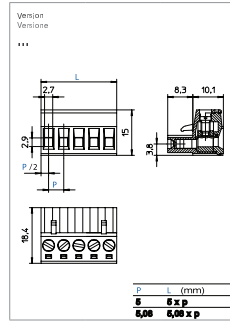
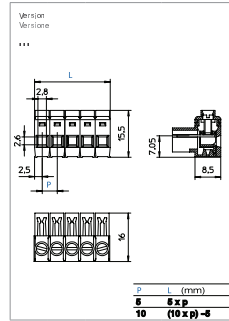
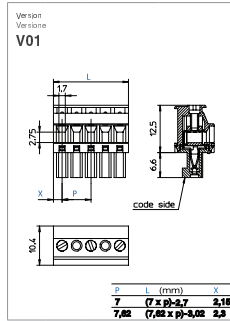
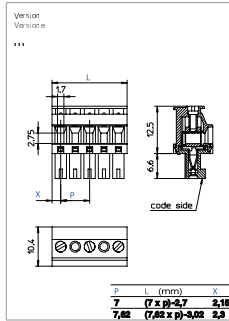
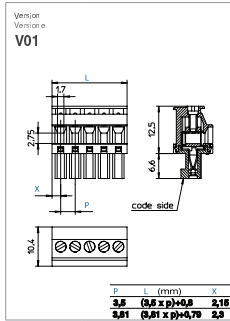
Poles - Poli - Póles - Polzahl 2/24



Pitch Pis	Passo Rastermaß	mm
Rated Voltage Tensione nominale	Rated Voltage Tensione nominale	V
Rated Current Intensità nominale	Rated Current Intensità nominale	A
Types of cables Type of conductor	Tipi cavi Lattingsystem	mm ² AWG
Nominal cross section Sezione nominale	Nominal cross section Sezione nominale	mm ² AWG
Stripping length Lunghezza spelatura	Stripping length Lunghezza spelatura	mm
Torque Coppia di serraggio	Torque Coppia di serraggio	Nm
Temperature Temperatura	Temperature Temperatura	°C
Housing Corpo isolante	Housing Corpo isolante	
Captive Screw Vite Imperdabile	Captive Screw Vite Imperdabile	mm

IMQ	EN61984	
VDE	EN61984	
cUL	UL1059 + C22 2 n°158	
Poles Póles Couleurs	Poli Polzahl Farben	X
Other information Altre informazioni	Altre informazioni Weitere Informationen	p.

How to order Riferimento di comando	Ordinazione Bestellungsbeleg				
MRT22 P3.5 / X	V01 Y N...				
Type Tipo	Pitch Passo	Poles Poli	Version Versione	Colors Colori	Printing Numerazione
Type Tipo	Pitch Passo	Poles Poli	Version Versione	Colors Colori	Marking Marcatura
Type Tipo	Pitch Passo	Poles Poli	Version Versione	Colors Colori	Marking Marcatura



**FEMALE PLUG
RISING CLAMP**
**CONNETTORI FEMMINA
CARRELLO**
**CONNECTEURS FEMELLE
ÉTRIER REMONTANT**
**STECKERTEIL
LIFTPRINZIP**

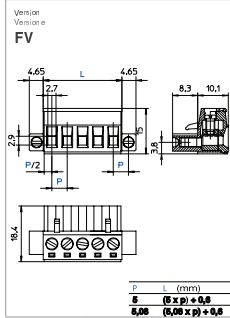
CPF.FV

Single block - Blocco unico
Monobloc - Einzelblock

Poles - Pôles - Polzahl 2/20



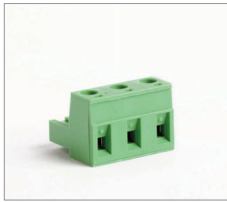
Pitch Paso	5 - 5,08	
Rated Voltage Tension nominale	320	
Rated Current Intensità nominale	20	
Types of cables Type de conducteur	0,2 + 2,5 30 + 12	
Nominal cross section Section nominale	7	
Stripping length Longueur de dénudage	0,5 / 5	
Torque Couples de serrage	110	
Temperature Température	PA - UL 94 V0	
Housing Corps isolant	M3	
Captive Screw Vis Imperdabile	0,6 x 3,5	
	V	mm ² /AWG
	320	20 0,2 + 2,5
	320	20 0,2 + 2,5
	300	12 24 + 12
	min 2 - max 20	
	VE / on demand GR GR1 NE AR BL RO GI	
	D/B1	



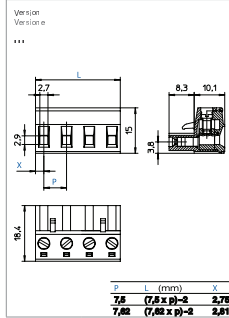
CPF

Single block - Blocco unico
Monobloc - Einzelblock

Poles - Pôles - Polzahl 2/12



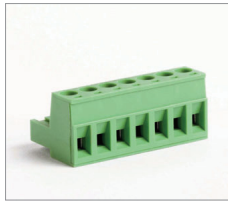
Pitch Paso	7,5 - 7,62	
Rated Voltage Tension nominale	500	
Rated Current Intensità nominale	20	
Types of cables Type de conducteur	0,2 + 2,5 30 + 12	
Nominal cross section Section nominale	7	
Stripping length Longueur de dénudage	0,5 / 5	
Torque Couples de serrage	110	
Temperature Température	PA - UL 94 V0	
Housing Corps isolant	M3	
Captive Screw Vis Imperdabile	0,6 x 3,5	
	V	mm ² /AWG
	500	20 0,2 + 2,5
	500	20 0,2 + 2,5
	300	12 24 + 12
	min 2 - max 12	
	VE / on demand GR GR1 NE AR BL RO GI	
	D/B1	



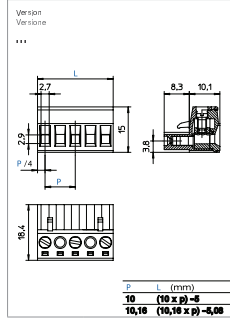
CPF

Single block - Blocco unico
Monobloc - Einzelblock

Poles - Pôles - Polzahl 2/12



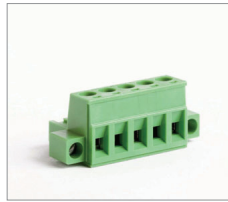
Pitch Paso	10 - 10,16	
Rated Voltage Tension nominale	630	
Rated Current Intensità nominale	20	
Types of cables Type de conducteur	0,2 + 2,5 30 + 12	
Nominal cross section Section nominale	7	
Stripping length Longueur de dénudage	0,5 / 5	
Torque Couples de serrage	110	
Temperature Température	PA - UL 94 V0	
Housing Corps isolant	M3	
Captive Screw Vis Imperdabile	0,6 x 3,5	
	V	mm ² /AWG
	630	20 0,2 + 2,5
	630	20 0,2 + 2,5
	300	12 24 + 12
	min 2 - max 12	
	VE / on demand GR GR1 NE AR BL RO GI	
	D/B1	



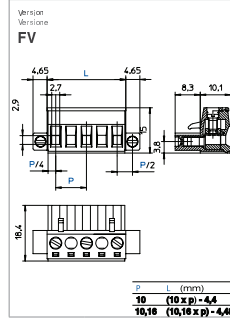
CPF.FV

Single block - Blocco unico
Monobloc - Einzelblock

Poles - Pôles - Polzahl 2/10



Pitch Paso	10 - 10,16	
Rated Voltage Tension nominale	630	
Rated Current Intensità nominale	20	
Types of cables Type de conducteur	0,2 + 2,5 30 + 12	
Nominal cross section Section nominale	7	
Stripping length Longueur de dénudage	0,5 / 5	
Torque Couples de serrage	110	
Temperature Température	PA - UL 94 V0	
Housing Corps isolant	M3	
Captive Screw Vis Imperdabile	0,6 x 3,5	
	V	mm ² /AWG
	630	20 0,2 + 2,5
	630	20 0,2 + 2,5
	300	12 24 + 12
	min 2 - max 10	
	VE / on demand GR GR1 NE AR BL RO GI	
	D/B1	



MRT3

Single block - Blocco unico
Monobloc - Einzelblock

Poles - Pôles - Polzahl 2/24



Pitch Paso	5 - 5,08	
Rated Voltage Tension nominale	320	
Rated Current Intensità nominale	20	
Types of cables Type de conducteur	0,2 + 2,5 30 + 12	
Nominal cross section Section nominale	7	
Stripping length Longueur de dénudage	0,5 / 5	
Torque Couples de serrage	110	
Temperature Température	PA - UL 94 V0	
Housing Corps isolant	M3	
Captive Screw Vis Imperdabile	0,6 x 3,5	
	V	mm ² /AWG
	320	20 0,2 + 2,5
	320	20 0,2 + 2,5
	300	12 30 + 12
	min 2 - max 24	
	VE / on demand GR GR1 NE AR BL RO GI	
	D/B1	

