

NOTES1:

UL Standard

1. Rated voltage/current : 300V / 8A
2. Withstanding voltage : AC1600V/1Min.
3. Torque value : M2 , 1.77Lb.in
4. Wire range : 28~16AWG

IEC Standard

1. Pollution degree	2
Overtoltage category	II
Rate impulse voltage(KV)	2.5KV
Rate voltage(V)	250V
Rate current(A)	7A

2. Torque value : M2 , 0.2N·m
3. Wire range : 0.5~1.5mm²

NOTES2:

1. Dimension shall be interpreted per ASME Y14.5-2009
2. Pitch : 3.81mm, Poles : N=02~24P
3. Stripping length : 6~7mm
4. Operating temperature: -40°C~+105°C
5. Undimensioned tolerances:

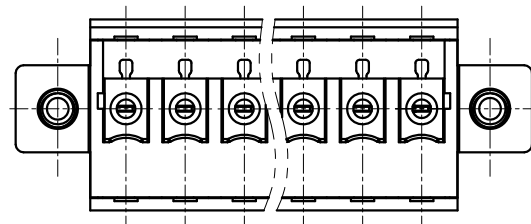
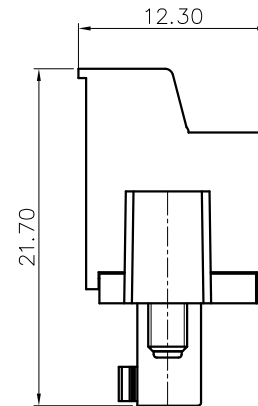
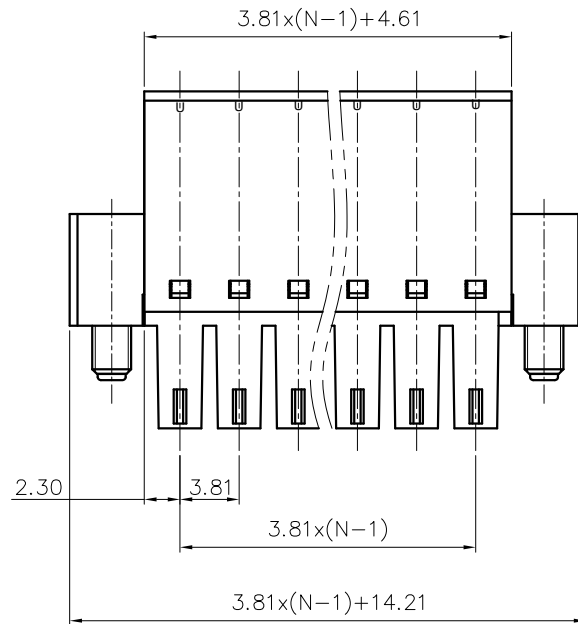
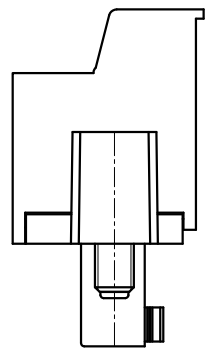
Pitch range in mm		Nominal dimension range in mm					0.1/10	
TO	Over TO	TO	Over TO	TO	Over TO	TO	Over TO	±
6	10	6	10	30	60	100	150	
±0.15	±0.20	±0.30	±0.30	±0.50	±0.70	±1.00	±1.30	±2'

6. RoHS Compliance

15EGTKCM - 3.81 - XXP - X X - XX AH

① ② ③ ④ ⑤ ⑥ ⑦

- ① Series No.
- ② Pitch
- ③ Poles
- ④ 1 Single Pitch
2 Double Pitch
- ⑤ Color: 1 Grey
2 Blue
3 Black
4 Green(Standard For AH)
5 Orange
6 Red
7 Transparent
8 Yellow
9 White
- ⑥ Customer Request : 00--Standard
- ⑦ AH--Standard(PA66)



DETACHED LISTS	PART NO.:	Ma/ 05/10/17'			NINGBO GOLTEN ELECTRONICS CO., LTD.		
	APPD:	/	NAME:			15EGTKCM-3.81-XXP-XX-00AH	
	CHKD:	/	TITLE:			CUSTOMER DRAWING	REV D0
	DRFT:	/	DRAWING NO.:			/	SHEET 1/1
	THIRD ANGLE PROJECTION		MM (INCH)		DO NOT SCALE DRAWING		SCALE 1:1

H
G
F
E
D
C
B
A

8

7

6

5

4

3

2

1

H
G
F
E
D
C
B
A