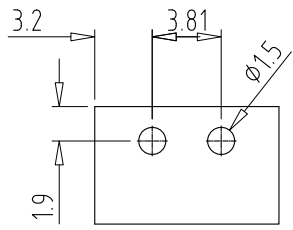
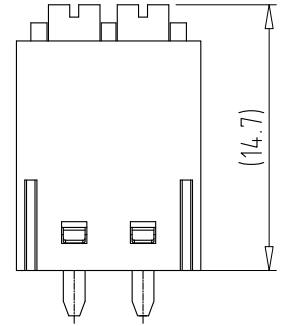
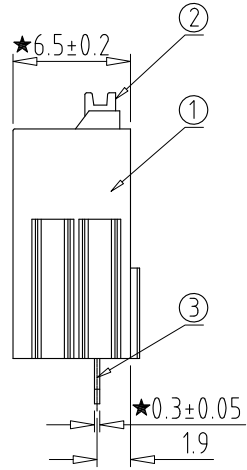
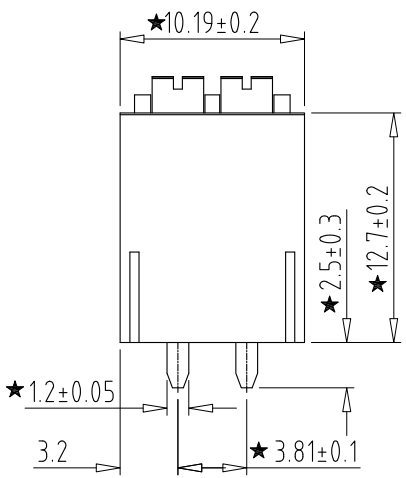
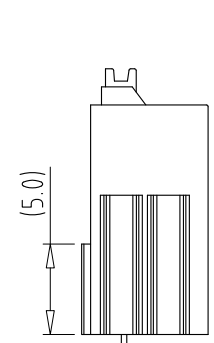
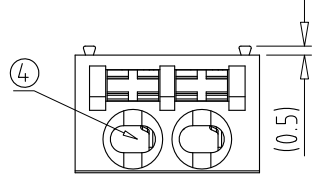


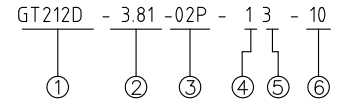
REV	CONTENT	CHK	DATE
V0.0	CONTENT	ZCL	25.09.29
V0.1	UPDATE	ZCL	26.01.26



PCB LAYOUT



Electrical : IEC  
 UL 160V  
 1.Rated Voltage : 300V 8A  
 2.Rated Current : 8A 0.34-1.5mm<sup>2</sup>  
 3.Wire Range: 22-16AWG  
 4.Stripping Length : 9-10mm  
 5.Operating Temperature : -40°C~+115°C  
 6.RoHS Compliance  
 7."★" is the key quality control point



- ① Series NO.
- ② Pitch
- ③ Poles
- ④ 1 Single Pitch  
2 Double Pitch
- ⑤ Color: 1 Grey  
2 Blue  
3 Black  
4 Green  
5 Orange  
6 Red  
7 Transparent  
8 Yellow  
9 White
- ⑥ Customer Request: 10--BUTTON Color: Orange



4	SHRAPNEL	XX	2	STAINLESS STEEL	/
3	CONTACTS	XX	2	Copper alloy	Tin Plated
2	BUTTON	XX	2	POM(Orange)	UL94-HB
1	HOUSING	XX	1	PA66	UL94V-0
ITEM	NAME OF PART	NO. OF PART	Q'TY	MATERIAL	NOTE
DWG.	ZCL	DATE	25.09.29	SIZE	A4 UNITS mm SHEET/OF 1/1
CHK.		DATE		SCALE	1:1
APP.		DATE		NAME	GT212D-3.81-02P-13-10
				DWGNO.	XXXX

**Golten** 宁波冠泰电子有限公司  
 NINGBO GOLTEN ELECTRONICS CO., LTD.

Total Pitch Tolerances in mm										Nominal dimension range in mm										⊥	≡	-	//	
over 0	over 30	over 53	over 70	over 90	over 115	over 150	over 250	over 350	over 500	over 0	over 30	over 53	over 70	over 90	over 115	over 150	over 200	over 250	over 320	0	over 10	0	over 100	over 150
±0.18	±0.20	±0.25	±0.3	±0.35	±0.44	±0.60	±0.70	±0.85	±0.20	±0.25	±0.30	±0.35	±0.44	±0.55	±0.70	±0.80	±0.90	0.2	0.3	0.3	0.3	0.2	0.3	0.5