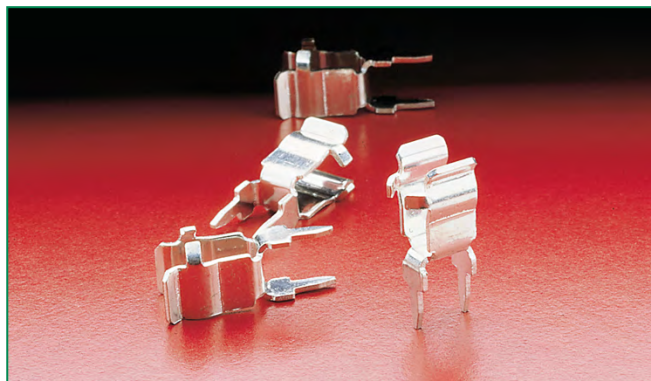




100/445/030/520 Series Circuit Board Mount Fuse Clips for 5mm Diameter Fuses



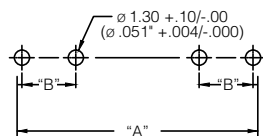
Product Characteristics

	100 054/056 series	100 020 series	445/030/520 series
Compatible Fuse Size	5mm Diameter Fuses 213, 215, 216, 217, 218, 219XA, 232, 233, 234, 235, 239, 477 and 977 Series		
Current Level	10 Amp max	20 Amp max	10 Amp max

Agency Approval

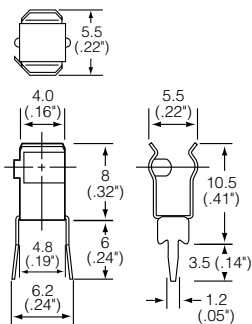
Agency	Agency File Number			
	100 054/056 series	445/030 series	100 020 series	520 series
	N/A		N/A	E14721
	N/A		E14721	

Product Dimensions



Recommended Mounting Dimensions

Fuse Size	A Dim.	B Dim.
5mm×20 mm	20.5 (.807")	4.60±.05(.181" ±.002)
5mm×25 mm	25.5 (1.004")	5.20±.05(.205" ±.002)
5mm×30 mm	31.0 (1.220")	5.80±.05(.228" ±.002)



0520 0001